

Bull Barn Genetics

Gelbvieh Semen Catalog

2010



Black PB

GeneStar	Quality Grade	QG	GPD
	Tenderness	T GPD	
	Feed Efficiency	FE GPD	

MCJ RJ HIGHLIGHT 732H
CTR HIGHLIGHT 066K
CTRG 442D

ALS FREEDOMS REFLECTION
ALS MS EBONY REFLECTION
ADS MS S&S PLD GIZMO

CE	BW	WW	YW	M	TM	GL	CED	SC	REA	MB
100	2.2	42	77	18	39	-2.6	108	1	-0.02	-0.04
.19	.32	.25	.19	.13		.31	.10	.21		

EPDs for January 2010 **Multiple Polled Black**

Top selling bull in the 2008 Bluegrass Gelbvieh Invitational Sale. Maverick nursed a super, moderate framed, deep ribbed, highly productive 6- year-old dam. The first carcass plus CTR Highlight 066K son on the market with a very limited semen supply on 066K. Highlight 066K daughters really milk and with the combo of Maverick's performance plus dam, expect the Maverick daughters to be maternal plus.

ALS Maverick 70T

AMGV 1052246
Born: 9/3/2007 Semen: \$25

Black PB

GeneStar	Quality Grade	QG	GPD
	Tenderness	T GPD	
	Feed Efficiency	FE GPD	

JNS MR IMAGE 6E ET
LWHF FEARLESS
JNS MISS CAROLINA POWER 25

SPUR BERETTA 703G
GDX 23K
GDX 01E

CE	BW	WW	YW	M	TM	GL	CED	SC	REA	MB
106	0.6	37	64	19	38	-2.2	104	0.4	0.01	-0.04
.50	.79	.67	.42	.38		.72	.32	.53	.49	.43

EPDs for January 2010 **DbI Polli/Scurred Homo Black**

Balance in EPD's and genetics to make great females.

BABR Playboy

AMGV 811614
Born: 3/14/2002 Semen: \$30

Black PB

GeneStar	Quality Grade	QG	GPD
	Tenderness	T GPD	
	Feed Efficiency	FE GPD	

FHG FLYING H EXTRA 150D
BTI EXTRA 2106K ET
BTI LADY GRANITE 2001E ET

SLC RATED-R KIOSK 115K
TJB ASK NO QUESTIONS 359N E
SLC ANITA 19F ET

CE	BW	WW	YW	M	TM	GL	CED	SC	REA	MB
100	3.3	49	84	11	36	-1.7	104	0.6	-0.1	-0.08
.27	.46	.29	.19	.17		.32	.14	.17		

EPDs for January 2010 **Homo Polled Black**

Butler Creek Farms Ole Hickory 359R swept the Junior Bull Calf Championship and was talk of the 2005 Louisville Show. His first calf maternal plus dam possesses excellence in the teat/udder department. Performance plus individual with an incredible 959 pound 205 day weight.

BCFG Butlers Ole Hickory 359R

AMGV 938083
Born: 1/8/2005 Semen: \$25

Black PB

GeneStar	Quality Grade	QG	GPD
	Tenderness	T GPD	
	Feed Efficiency	FE GPD	

VAA LEACHMAN NEW DAY 205E
SLC FREEDOM 178F ET
BB MISS 61Y

DCSF POST ROCK HEARTLAND
DCSF POST ROCK ARATA 39F2
DCSF POST ROCK ARATA 32C2

CE	BW	WW	YW	M	TM	GL	CED	SC	REA	MB
110	-2	34	70	16	33	-5.6	109	-0.4	0.06	-0.19
.49	.81	.71	.50	.39		.59	.31	.35	.61	.57

EPDs for January 2010 **Polled Black**

Citizen was the second high-selling bull in the 2002 National Gelbvieh Sale and is first calf crop looks very impressive. Citizen's famous dam, DCSF Post Rock Arata 39F2 co-owned by Post Rock Cattle Co., and Beying's Dawson Creek has produced numerous sale toppers on the National level. His first calf crop is exhibiting his super rump structure/eye appeal.

BDCG Citizen F39L ET

AMGV 750442
Born: 1/6/2001 Semen: \$20

Black PB

GeneStar	Quality Grade	QG	GPD
	Tenderness	T GPD	
	Feed Efficiency	FE GPD	

JCGR BAR GT EINSTEIN
HAD THE JUDGE ET
CDBG MISS MEG 63F

WAC ELK NIGHT RYDER 522E E
BNC J914
BNC G743

CE	BW	WW	YW	M	TM	GL	CED	SC	REA	MB
94	4.5	76	127	21	59	-1.6	102	1.3	0.17	-0.04
.38	.68	.57	.23	.21		.39	.20	.30	.21	.19

EPDs for January 2010 **Polled Black**

Raisin the Bar was purchased for his outcross genetics and his amazingly powerful growth. He logged an amazing 1016 pound adjusted weaning weight and a 1546 pound yearling weight. He had a 41 cm scrotal and a 16.3 adjusted ribeye area. Carcass and reproductive traits all in one package.

BNC P455 "Raisin the Bar"

AMGV 913043
Born: 3/26/2004 Semen: \$20

Black PB

Quality Grade		QG GPD
0	0	
Tenderness		T GPD
2	0	1
Feed Efficiency		FE GPD
		-1.098

KCF BENNETT PREMIER Z104
FHG FLYING H EXTRA 150D
FHG MS FHG NITE LADY 50A

POW BTI ZORRO 2143Z
BTI LADY GRANITE 2001E ET
KAB LADY GRANITE 432S

CE	BW	WW	YW	M	TM	GL	CED	SC	REA	MB
107	-0.7	39	68	-3	17	-1.7	108	0.4	-0.2	-0.16
.75	.92	.88	.78	.63		.87	.52	.76	.79	.76

EPDs for January 2010 **Homo Polled Black**

2106K is one of Beartooth Ranches, MT hottest bulls right now out of the legendary donor, Lady Granite 2001E. The Extra 2106K calves look ultra complete and sound with plenty of performance. A complete package with phenotype, great dam.

BTI Extra 2106K ET

AMGV 714886
Born: 3/5/2000 Semen:\$ 25

Black PB

Quality Grade		QG GPD
0	0	0
Tenderness		T GPD
1	0	0
Feed Efficiency		FE GPD
		-0.349

BEA POLLED MIDNIGHT
MCJ BLACK HUSKER
OLY 30X

AAA TOM HORN
CTR CEDAR TOP'S MISS POWER
CTR STAR FLOPRIM 659U

CE	BW	WW	YW	M	TM	GL	CED	SC	REA	MB
98	2.2	40	67	25	45	-2.1	105	0.9	0.28	-0.36
.80	.95	.92	.85	.84		.92	.75	.84	.91	.90

EPDs for January 2010 **Homo Polled Homo Black**

Echo is one of the most popular black sires in the breed. He consistently sires thick, wide based, stout, feminine females with plenty of milk. His progeny have more Grand and Reserve Champions than any other sire. If muscle, correct structure, and overall quality are your needs in Gelbvieh, look no further.

CTR Echo 575E

AMGV 488923
Born: 4/2/1995 Semen:\$ 20

Black PB

Quality Grade		QG GPD
Tenderness		T GPD
Feed Efficiency		FE GPD

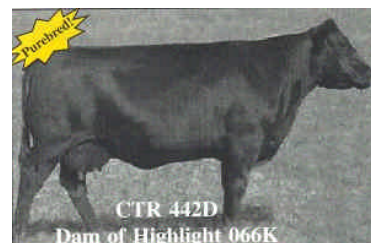
CTR SARGE 563E
MCJ RJ HIGHLIGHT 732H
MCJ RJ 529E

CTR CEDAR TOP'S BERKLEY
CTRG 442D
POW MISS SANDHILLS 65A

CE	BW	WW	YW	M	TM	GL	CED	SC	REA	MB
99	2.8	46	87	15	38	-2.1	110	1.1	-0.08	0.01
.47	.84	.77	.59	.39		.73	.26	.44	.56	.51

EPDs for January 2010 **Homo Polled Homo Black**

Spring 2005 New Sire Addition...produced top selling bull in Cedar Top Ranch spring 2005 bull sale. 066K's sire in a structured carcass test yielded the highest carcass weights- all "choice" except one "select," making him the top bull in the evaluation. Dam, CTRG 442D, is one of the most dominant females at Cedar Top Ranch and in the Gelbvieh breed. Super combo of excellent EPD strength and flawless phenotype. Semen is limited.

CTR Highlight 066K

AMGV 721537
Born: 3/30/2000 Semen:\$ 35

Black PB

Quality Grade		QG GPD
Tenderness		T GPD
Feed Efficiency		FE GPD

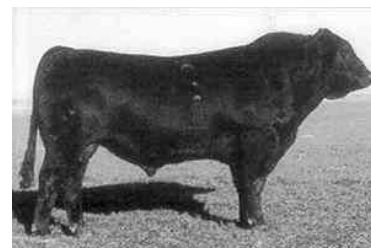
KCF VIRGINIAN
KCF BENNETT PREMIER Z104
GAA GARST COW R9599

MCJ BLACK HUSKER
CTRG CEDAR TOP'S TIFFANY
CTRG CEDAR TOPS TIFFANY

CE	BW	WW	YW	M	TM	GL	CED	SC	REA	MB
109	-3.1	34	59	30	47	-2.3	105	0.2	-0.06	-0.06
.76	.89	.84	.70	.68		.85	.55	.69	.80	.78

EPDs for January 2010 **Polled Black**

Limited Edition has been a standby for calving ease. He currently is a trait leader for calving ease, birth weight, milk, gestation length, and calving ease of daughters. His daughters are easy fleshing with muscle and volume. Limited Edition's dam, Tiffany, is famous at Cedar Top Ranch and has continued to be an elite cow in the breed.

CTRG Limited Edition 411D1

AMGV 439840
Born: 3/17/1994 Semen:\$ 15

Black PB

Quality Grade		QG GPD
Tenderness		T GPD
Feed Efficiency		FE GPD

BEA POLLED MIDNIGHT
MCJ BLACK HUSKER
OLY 30X

ATM TEJAS ROLLS ROYCH 868
CTR CEDAR TOPS 010Y
CTR BLACK POLL STARR 212W

CE	BW	WW	YW	M	TM	GL	CED	SC	REA	MB
105	0.9	41	75	12	33	-1.6	102	0.8	0.14	-0.17
.50	.83	.73	.48	.54		.75	.42	.43	.63	.60

EPDs for January 2010 **Homo Polled Homo Black**

CTRG Vision 52E is a recently released syndication bull that has been not available to the public. Vision is the ultimate female producer. They are feminine fronted and very structurally correct with perfect udders. Commercial cattlemen have demanded sons for years at bull sales where available. Vision sons have been sale toppers for many years. Use this great breeding bull to add marketability and quality to your calf crop.

CTRG Vision 52E

AMGV 544174
Born: 9/9/1995 Semen:\$ 25

Black PB

Quality Grade		QG	GPD
0	0		
Tenderness		T GPD	
2	0	1	-1.098
Feed Efficiency		FE GPD	

CE	BW	WW	YW	M	TM	GL	CED	SC	REA	MB
106	1	48	103	21	45	0	106	0.4	0.35	0.11
.40	.71	.60	.35	.21		.61	.18	.28	.36	.28

EPDs for January 2010 **Homo Polled** **Homo Black**

Homozygous black and homozygous polled with three stars of tenderness. National sired the second high selling bull at the 2007 Iowa Beef Expo. His progeny look great!

DAR National 302N

AMGV 846221

Born: 2/4/2003 Semen: \$20

MLLC ML ADVANTAGE
FHG VVFG FLYING H EXCLUSIVE
FHG FLYING H CADISISTER 95E

GKT BUD 11G
FHG FLYING H MS BUD 240L ET
CKA WOODLAND BELLE 217B

Black PB

Quality Grade		QG	GPD
Tenderness		T GPD	
Feed Efficiency		FE GPD	

CE	BW	WW	YW	M	TM	GL	CED	SC	REA	MB
97	4.9	59	104	9	39	-2.1	104	0.1	0.28	-0.07
.41	.75	.66	.45	.33		.56	.26	.34	.46	.40

EPDs for January 2010 **Homo Polled** **Homo Black**

Rawhide was Cedar Top Ranches, NE pick at the 2003 Iowa Beef Expo. He looks to be the next step in genetics from the great Bronco. Rawhide is long, thick and deep, and of course, great profiled.

DAR Rawhide 201M ET

AMGV 795575

Born: 1/25/2002 Semen: \$25

CSG ELK BLACK PLD KENO 26E
ELK CK BRONCO 411G
ELK 411D

JEB POLLED GIZMO 17Z
CKA WOODLAND BLACKBIRD 62
CKA WOODLAND BLACKBIRD 43

Black PB

Quality Grade		QG	GPD
Tenderness		T GPD	
Feed Efficiency		FE GPD	

CE	BW	WW	YW	M	TM	GL	CED	SC	REA	MB
116	-4.6	48	96	23	47	-4.9	111	0.6	0.11	0.07
.58	.80	.72	.44	.36		.73	.36	.62	.45	.39

EPDs for January 2010 **Double Polled** **Black**

Look at birth, growth and profile.

DCH Hille M118 Majesty

AMGV 819729

Born: 3/7/2002 Semen: \$20

JBOB CAROLINA POWER
DCH HILLE K23 KODIAK
DCH F04

TLR COCOA 35C
DCH HILLE J01 JERI
DCH G10

Black PB

Quality Grade		QG	GPD
0	0		
Tenderness		T GPD	
1	0	0	-0.349
Feed Efficiency		FE GPD	

CE	BW	WW	YW	M	TM	GL	CED	SC	REA	MB
105	-0.9	48	88	15	39	-6.2	105	0	0.05	-0.08
.53	.79	.69	.35	.17		.64	.14	.30	.29	.21

EPDs for January 2010 **Homo Polled** **Homo Black**

200P2 was the most exciting bull to sell in the 2006 sale season. He posted a 110 WW ratio, and is in the top 10% of the breed for WW, top 5% for YW, and top 30% for Calving Ease and low Birth Weight. Top genetics for growth, eye appeal with a moderate birth EPD.

DCSF Post Rock Granite 200P2

AMGV 930426

Born: 9/15/2004 Semen: \$25

BTI EXTRA 2106K ET
BTI GRANITE 2135M
BTI ELECTRA B 2001H

MRCO NEW DIRECTION 905
DCSF POST ROCK TWILA 223M2
DCSF POST ROCK TWILA 3F2

Black PB

Quality Grade		QG	GPD
Tenderness		T GPD	
Feed Efficiency		FE GPD	

CE	BW	WW	YW	M	TM	GL	CED	SC	REA	MB
111	1.4	49	79	18	43	1.1	105	0.3	0.45	-0.04
.42	.84	.58	.38	.27		.79	.22	.36	.36	.28

EPDs for January 2010 **Homo Polled** **Homo Black**

EGL Northern Wind P068 ET

AMGV 907439

Born: 2/15/2004 Semen: \$30

FHG FLYING H EXTRA 150D
EGL NORTHERN EXPOSURE J171
EGL C111 ET

GKT BUD 11G
EGL OLIVIA J811 ET
EGL OLIVE F025 ET

Black PB

GeneStar	Quality Grade		QG	GPD
	Tenderness		T GPD	
Feed Efficiency		FE GPD		

ATM TEJAS ROLLS ROYCH 868
 PBSG BLACK TIE 123A
 MCG MISS MCG 59X

EGR BLACK BOB
 EGR D7
 EGR B76

CE	BW	WW	YW	M	TM	GL	CED	SC	REA	MB
111	-1.9	22	47	18	29	-1.9	106	1	0.07	-0.02
.56	.79	.70	.46	.38		.40	.27	.54	.45	.39

EPDs for January 2010 **Homo Polled Homo Black**

"Mitch" will give the breeder calving ease along with new genetics for many breeding programs. The calves are vigorous at birth but keep growing with nice tops, expression of muscling and plenty of capacity. Look for Mitch to add maternal traits and a great set of daughters to the most discriminating breeding programs.

EGR Ellison 608F "Mitch"

AMGV 541139
 Born: 3/10/1996 Semen: \$18

Black PB

GeneStar	Quality Grade		QG	GPD
	Tenderness		T GPD	
Feed Efficiency		FE GPD		

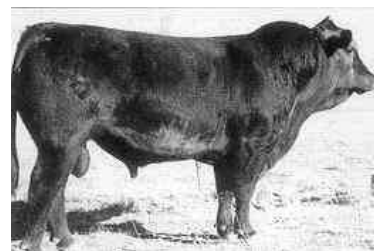
KCF BENNETT PREMIER Z104
 MLLC M/L ADVANTAGE
 CTR CEDAR TOP'S PERFECTA

JEB ACE OF SPADES 10X
 ELK SPADES LADY DPBK 234A
 POW MISS BLK IMP 11X

CE	BW	WW	YW	M	TM	GL	CED	SC	REA	MB
115	-3.3	21	51	11	22	-2.4	105	-0.1	0.14	0.04
.82	.92	.87	.77	.73		.87	.55	.75	.85	.83

EPDs for January 2010 **Homo Polled Homo Black**

Ace Ventura is a sire to use on heifers and expect almost no assistance and the calves will be black and polled. The females are heavy milking, easy fleshing, and good uddered. Ace Ventura will work well on large frame females.

ELK Ace Ventura 234F

AMGV 536298
 Born: 3/13/1996 Semen: \$18

Black PB

GeneStar	Quality Grade		QG	GPD
	0	0		
	Tenderness		T GPD	
	2	0	0	-0.698
Feed Efficiency		FE GPD		

FHG FLYING H CADILLAC 184C
 CSG ELK BLACK PLD KENO 26E
 LBW MS GIL PADDY 110W 11Z

ELK CK NIGHT TRAIN POLL 28Z
 ELK 411D
 RON 250X

CE	BW	WW	YW	M	TM	GL	CED	SC	REA	MB
103	2.6	59	111	0	30	-2	104	0.7	0.26	-0.06
.78	.94	.91	.83	.79		.90	.67	.82	.90	.89

EPDs for January 2010 **Homo Polled Homo Black**

Bronco will be an outcross for many programs and adds performance and eye appeal to his progeny. His balance of traits along with his physical eye appeal will add many dollars to his progeny. Look for his progeny to be the most talked about Gelbvieh, whether it be at shows or on weigh day.

ELK CK Bronco 411G

AMGV 586994
 Born: 4/10/1997 Semen: \$30

Black PB

GeneStar	Quality Grade		QG	GPD
	Tenderness		T GPD	
Feed Efficiency		FE GPD		

GKT BOO BOO 155E
 GRU ELK DEE JAKE 744J
 GRU MS COCOA 744G

EGR ELK CREEK LONER 712G
 ELK CK KERRY 138L
 ELK CK KITTEN 826H

CE	BW	WW	YW	M	TM	GL	CED	SC	REA	MB
102	2.7	54	100	21	48	-1.6	105	0.8	0.02	0.08
.43	.82	.71	.49	.25		.77	.23	.54	.33	.25

EPDs for January 2010 **Homo Polled Homo Black**

Crazy Horse is an attractive patterned, level topped bull who possesses loads of muscle shape. He was Division Champion at the 2006 NWSS. Crazy Horse's maternal grand-dam is a Dam of Merit, and her dam has been a Dam of Distinction for years.

ELK CK Crazy Horse 138P

AMGV 902554
 Born: 2/28/2004 Semen: \$20

Black PB

GeneStar	Quality Grade		QG	GPD
	Tenderness		T GPD	
Feed Efficiency		FE GPD		

KCF VIRGINIAN
 KCF BENNETT PREMIER Z104
 GAA GARST COW R9599

VTG BEL BOY 367U
 FHG 22Y
 FHG MS FLYING H 43U

CE	BW	WW	YW	M	TM	GL	CED	SC	REA	MB
106	2.4	47	86	20	44	0.5	107	1.6	0.11	-0.08
.72	.91	.87	.74	.76		.88	.68	.72	.84	.82

EPDs for January 2010 **Polled Black**

There are a few units of semen left on this proven sire.

FHG Flying H Cadillac 184C

AMGV 384878
 Born: 3/6/1993 Semen: \$15

Black PB

GeneStar	Quality Grade		QG GPD	
	0	0	2	10.58
	Tenderness		T GPD	
	2	0	0	-0.698
Feed Efficiency		FE GPD		

KCF VIRGINIAN
 KCF BENNETT PREMIER Z104
 GAA GARST COW R9599
 GNG NIGHT HAWK 08X
 FHG MS FHG NITE LADY 50A
 FHG MR FHG BEL BOY 114Y

CE	BW	WW	YW	M	TM	GL	CED	SC	REA	MB
111	-1.6	32	52	12	28	-2.5	105	0.3	-0.15	-0.05
.91	.96	.94	.89	.88		.94	.82	.88	.93	.92

EPDs for January 2010 **Homo Polled** **Homo Black**
 Extra is a highly proven calving ease bull with the added feature of being homozygous black and homozygous polled. Along with being a heavily used sire, he produces marketability in his progeny. He has been used on large frame cows and higher birth weight females to moderate the progeny.

FHG Flying H Extra 150D



AMGV 427849
 Born: 2/25/1994 Semen:\$ 20

Black 88%

GeneStar	Quality Grade		QG GPD	
	0	1		
	Tenderness		T GPD	
	2	0	0	-0.698
Feed Efficiency		FE GPD		

VAA LEACHMAN NEW DAY 205B
 SLC FREEDOM 178F ET
 BB MISS 61Y
 GGGR 3G COWBOY 155L
 GGGE 3G COWGIRL NOTIONS 3
 GGGE 3G COWGIRL LYDIA 147L

CE	BW	WW	YW	M	TM	GL	CED	SC	REA	MB
103	1.4	46	87	12	35	-2.6	106	0.4		
.29	.48	.38	.21	.19		.44	.17	.20		

EPDs for January 2010 **Polled** **Black**
 Exciting new black polled sire that swept the '06 American Royal and Louisville shows. Exceptional disposition. Cowman kind of bull - loaded with beef, butt and guts. Powerful 3G cow family with Rio Bravo's dam sporting a 106 weaning weight ratio.

GGGE 3G Rio Bravo 564R



AMGV 940384
 Born: 3/11/2005 Semen:\$ 30

Black 88%

GeneStar	Quality Grade		QG GPD	
	Tenderness		T GPD	
Feed Efficiency		FE GPD		

VAA LEACHMAN NEW DAY 205B
 SLC FREEDOM 178F ET
 BB MISS 61Y
 GGGR 3G COWBOY 155L
 GGGE 3G COWGIRL NOTIONS 3
 GGGE 3G COWGIRL LYDIA 147L

CE	BW	WW	YW	M	TM	GL	CED	SC	REA	MB
114	-2.2	33	69	13	30	-3.3	109	0.3		
.23	.36	.32	.18	.19		.34	.17	.17		

EPDs for January 2010 **Homo Polled** **Black**
 Full brother to 2007 National Champion Bull Rio Bravo. Space Cowboy's first calves look exceptional. First calf crop produced the 2008 Louisville Reserve Champion Female and 4th overall heifer calf (over all breeds) at the 2008 Hoosier Beef Congress Show with 854 heifer calves in competition. Powerful 3G Ranch cow family.

GGGE 3G Space Cowboy



AMGV 983071
 Born: 2/7/2006 Semen:\$ 25

Black PB

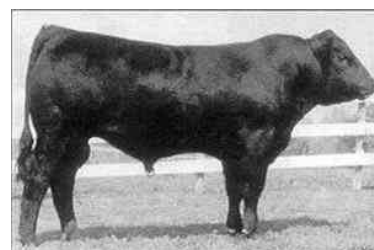
GeneStar	Quality Grade		QG GPD	
	Tenderness		T GPD	
Feed Efficiency		FE GPD		

FHG FLYING H CADILLAC 184C
 GKT BOO BOO 155E
 CCD X55
 DCJ MR PEPPER SHAKER
 GKT KATIE
 PHG PRAIRIE LIZA A22

CE	BW	WW	YW	M	TM	GL	CED	SC	REA	MB
109	-1.3	42	78	14	35	-2.3	104	0.1	0.48	0
.82	.93	.90	.82	.79		.90	.71	.82	.89	.88

EPDs for January 2010 **Homo Polled** **Black**
 Bud was the 1998 Grand Champion Bull at the National Western Stock Show and the 1998 Breeders Choice Futurity Champion bull. Bud puts calving ease, growth, and eye appeal in his progeny. His first calf crop has created excitement across the United States.

GKT Bud 11G



AMGV 567881
 Born: 1/5/1997 Semen:\$ 20

Black PB

GeneStar	Quality Grade		QG GPD	
	Tenderness		T GPD	
Feed Efficiency		FE GPD		

GKT BOO BOO 155E
 GKT BUD 11G
 GKT KATIE
 DDF OTIS ET
 GKT 45F
 GAR GAUGLER LADY 440D

CE	BW	WW	YW	M	TM	GL	CED	SC	REA	MB
109	-1.1	34	72	13	30	-4.5	107	0.1	0.24	0.04
.67	.86	.80	.61	.52		.82	.39	.63	.72	.69

EPDs for January 2010 **Homo Polled** **Homo Black**
 The \$17,000 bull that should receive a great deal of attention from producers that are breeding their first calf heifers. Style with substance is an apt description of Dusty. First calves are coming easy and to date all appear to be polled. The bull deserves your attention - - he will be an "impact player". Recommended for first calf heifers.

GKT Dusty 16J



AMGV 655343
 Born: 1/6/1999 Semen:\$ 25

Black PB

Quality Grade		QG GPD
0	0	
Tenderness		T GPD
2	0	1
Feed Efficiency		FE GPD
		-1.098

JBOB CAROLINA 911
 JBOB CAROLINA PARKWAY
 REMC SHOW GIRL ET 517E

FHG FLYING H EXTRA 150D
 GPE SWEETIE'S BABY DOLL 1J
 JRI PLD GRAND PRIX 108G61

CE	BW	WW	YW	M	TM	GL	CED	SC	REA	MB
100	4.1	30	62	11	26	-0.2	105	0	-0.08	-0.06
.43	.73	.61	.41	.33		.62	.23	.43	.37	.30

EPDs for January 2010 **Polled** **Homo Black**

Tremendous low birth to super growth spread with incredible rib, volume and capacity in a phenotypically flawlessly made package. Beautiful Dam of Merit dam with a perfect teat/udder quality. Dam ratios: 93 BW, 103 WW and 109 YW (Widespread at 1,383). Dam's second calf only weighed 68 pounds at birth while spreading growth at 748 pounds.

GPE Widespread 3L

AMGV 774454
 Born: 1/24/2001 Semen:\$ 10

Black PB

Quality Grade		QG GPD
1	0	
Tenderness		T GPD
2	0	0
Feed Efficiency		FE GPD
		-0.698

ELK CK SCORPION 2343H ET
 HYEK BLACK IMPULSE 1296L
 OAKK VALLEY LADY 296J

FHG FLYING H EXTRA 150D
 HYEK BLACK RUBY 9604J
 HYEK DOTTIE F6048

CE	BW	WW	YW	M	TM	GL	CED	SC	REA	MB
105	-0.7	41	73	16	37	-6	100	0.1	0.11	-0.04
.46	.83	.75	.56	.18		.71	.13	.51	.29	.21

EPDs for January 2010 **Homo Polled** **Homo Black**

Progeny are looking impressive, moderate frame and muscle expression. Black Impact comes from a proven dam.

HYEK Black Impact 3960N

AMGV 844875
 Born: 2/7/2003 Semen:\$ 25

Black PB

Quality Grade		QG GPD
0	0	
Tenderness		T GPD
1	0	0
Feed Efficiency		FE GPD
		-0.349

MCJ BLACK HUSKER
 CTR ECHO 575E
 CTR CEDAR TOP'S MISS POWE

DDM MR SHERMAN TANK
 JBOB MISS 92C
 LDL LL MISS AUGUST

CE	BW	WW	YW	M	TM	GL	CED	SC	REA	MB
98	3.1	57	91	16	45	-1.1	106	1.4	0.29	-0.13
.51	.87	.80	.63	.56		.75	.47	.61	.75	.72

EPDs for January 2010 **Homo Polled** **Homo Black**

Full brother to J-Bob 241J "Julia", the Champion Female at 2001 North American and 2001 National Western Daughters are long necked, clean fronted, feminine females while sons are high performing with an attractive look. Brings in greatness of Echo and Sherman Tank. Adds pounds, muscle, volume rib in an attractive package.

JBOB 2279J ET (Carolina RC)

AMGV 677948
 Born: 3/30/1999 Semen:\$ 20

Black PB

Quality Grade		QG GPD
0	0	
Tenderness		T GPD
2	0	0
Feed Efficiency		FE GPD
		-0.698

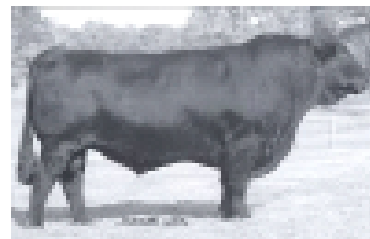
MCJ BLACK HUSKER
 CTR ECHO 575E
 CTR CEDAR TOP'S MISS POWE

DDM MR SHERMAN TANK
 JBOB MISS 92C
 LDL LL MISS AUGUST

CE	BW	WW	YW	M	TM	GL	CED	SC	REA	MB
105	0.8	37	72	28	47	-2.4	106	0.7	0.26	-0.14
.60	.86	.79	.64	.41		.80	.36	.61	.47	.40

EPDs for January 2010 **Homo Polled** **Homo Black**

Top selling bull in the JBOB Farms '05 Complete Dispersal Sale. Junior's maternal pedigree features two of the all-time great homozygous black, homozygous polled females in the breed - Miss 92C and Miss August '84Y'. Miss 92C and Miss August '84Y' progeny commanded all the top dollars in the JBOB Dispersal. Proven pedigree, moderate frame, muscle, depth and superior phenotype.

JBOB 3303K ET "Junior"

AMGV 708967
 Born: 3/24/2000 Semen:\$ 25

Black PB

Quality Grade		QG GPD
0	1	
Tenderness		T GPD
2	0	0
Feed Efficiency		FE GPD
		-0.698

ALS MR ELBONY ROLLS
 JBOB 254D
 JBOB 151A

JBOB CAROLINA POWER
 JBOB 719E
 JBOB MISS SUMMITT 41A

CE	BW	WW	YW	M	TM	GL	CED	SC	REA	MB
110	0.5	34	59	35	52	-0.6	103	0.9	0.08	0.25
.68	.91	.87	.74	.73		.86	.63	.73	.86	.85

EPDs for January 2010 **Polled** **Homo Black**

Breed leader for milk and total maternal EPD strength. Unmatched maternal strength coupled with exceptional carcass merit.

JBOB Carolina CPR

AMGV 611761
 Born: 9/13/1997 Semen:\$ 15

Black PB

Quality Grade		QG GPD
0	1	
Tenderness		T GPD
2	0	0
Feed Efficiency		FE GPD

CE BW WW YW M TM GL CED SC REA MB
 108 1.5 50 105 35 60 -0.3 101 0.5 0.24 0.2
 .77 .94 .90 .80 .64 .91 .54 .75 .83 .81

EPDs for January 2010 **Homo Polled Homo Black**

Proven genetics offering extra growth, attractive progeny with EPD's putting your genetics at a higher scale.

JBOB Carolina Fortune 2564JET

AMGV 687061

Born: 11/10/1999 Semen: \$25

JBOB 254D
 JBOB CAROLINA CPR
 JBOB 719E

DDM MR SHERMAN TANK
 JBOB MISS 92C
 LDL LL MISS AUGUST

Black PB

Quality Grade		QG GPD
Tenderness		T GPD
Feed Efficiency		FE GPD

CE BW WW YW M TM GL CED SC REA MB
 107 1.7 21 53 21 32 1 108 0.3 -0.04-0.06
 .64 .86 .79 .61 .56 .80 .38 .57 .74 .71

EPDs for January 2010 **Homo Polled Homo Black**

JBOB Carolina Parkway

AMGV 616917

Born: 2/18/1998 Semen: \$15

RKG POWERSTROKE
 JBOB CAROLINA 911
 KRT METTLER'S DIANA

POW JETSTREAM 36B
 REMC SHOW GIRL ET 517E
 TLR 10B

Black PB

Quality Grade		QG GPD
0	0	0
Tenderness		T GPD
2	0	0
Feed Efficiency		FE GPD

CE BW WW YW M TM GL CED SC REA MB
 99 3 49 83 19 44 -1 101 0.7 -0.06 0.23
 .77 .93 .90 .80 .80 .90 .72 .79 .87 .86

EPDs for January 2010 **Polled Homo Black**

Carolina Power is a calving ease specialist. Progeny have great performance and eye appeal. Daughters milk very well with lots of phenotype. Produces sons with eye appeal that generate dollars. Supply is limited due to Power's death.

JBOB Carolina Power

AMGV 408724

Born: 9/9/1993 Semen: \$20

KCF VIRGINIAN
 KCF BENNETT PREMIER Z104
 GAA GARST COW R9599

CBA CORNHUSKER RED
 HPL MISS HUSKER 029Z
 HPL MISS FLOTATION 719W

Black PB

Quality Grade		QG GPD
Tenderness		T GPD
Feed Efficiency		FE GPD

CE BW WW YW M TM GL CED SC REA MB
 96 4.3 59 109 14 44 1.9 105 1 0.1 -0.02
 .62 .89 .84 .67 .69 .81 .60 .67 .79 .77

EPDs for January 2010 **Homo Polled Black**

Einstein is certainly a growth bull that produces progeny with eye appeal. Progeny will have a smooth muscle pattern with depth of rib, volume, and the correctness to improve quality. Use Einstein to add growth!

JCGR BAR GT Einstein

AMGV 520797

Born: 2/12/1996 Semen: \$20

BEA POLLED MIDNIGHT
 TLR COCOA 35C
 TLR MISS KAISER 449Y

BBW PRIME RATE
 HPL MISS PRIME RATE 54U
 MRB 114S

Black PB

Quality Grade		QG GPD
0	1	
Tenderness		T GPD
1	0	1
Feed Efficiency		FE GPD

CE BW WW YW M TM GL CED SC REA MB
 101 2.7 32 61 20 36 -1 102 0.5 0.08-0.14
 .63 .87 .80 .64 .53 .79 .42 .55 .71 .68

EPDs for January 2010 **Polled/Scur Black**

The Gelbvieh breed's powerful 2003 National Champion Bull. Mach One topped Jumping Cow Gelbvieh '03 Sale at \$30,000. Mach One's fabulous dam, BDCG Claudia 1144J sold for \$20,000 in the Jumping Cow '03 Sale - Claudia and her progeny grossed over \$90,000.

JCGR Bar GT Mach One 54L

AMGV 749202

Born: 1/18/2001 Semen: \$20

VAA LEACHMAN NEW DAY 205B
 SLC FREEDOM 178F ET
 BB MISS 61Y

TLR COCOA 35C
 BDCG CLAUDIA 1144J
 BDCG E30

Black PB

Quality Grade		QG	GPD
1	0		
Tenderness		T GPD	
2	0	1	-1.098
Feed Efficiency		FE GPD	

SLC FREEDOM 178F ET
PMG PEGASUS 01P
XXB MISS DREW 221M

FHG FLYING H EXTRA 150D
LJS SALLEY ET
HBZ 437Y

CE	BW	WW	YW	M	TM	GL	CED	SC	REA	MB
103	3.3	33	63	16	33	-0.7	104	0	0.11	-0.1
.30	.55	.34	.17	.14		.35	.12	.15	.19	.17

EPDs for January 2010 **Homo Polled Homo Black**

Premonition topped the Spring '07 Midwest Performance Bull Sale and he's one of the most complete young sires to come into the breed for some time. He's sired by the 2005 Breeder's Choice Futurity Bull Pegasus and his famed dam LJS Salley ET is one of the top producing donor females in the country.

JHG Premonition 662S ET

AMGV 1006993
Born: 2/6/2006 Semen: \$25

Black PB

Quality Grade		QG	GPD
1	0		
Tenderness		T GPD	
2	0	1	-1.098
Feed Efficiency		FE GPD	

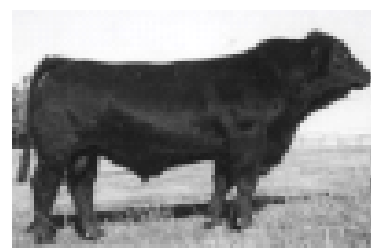
MLLC M/L ADVANTAGE
MLLC M/L ENCORE
MLLC M/L MISS MIDNIGHT 333C

LCBK BCC SHAQ 26D
JOB PLD DANELL DIAMOND 18H
JEB BCC RITA 52D

CE	BW	WW	YW	M	TM	GL	CED	SC	REA	MB
99	2.9	36	67	13	31	-1.5	99	0.6	0.18	-0.26
.47	.79	.70	.55	.42		.63	.27	.52	.56	.51

EPDs for January 2010 **Homo Polled Homo Black**

Ratioed 105 for REA and 129 for %IMF. He is a bull that shows tons of promise in improving carcass traits in your herd. Big bodied, thick made and wide topped. Diamond Six is an outstanding prospect that should not be overlooked this breeding season

JOB Danell Diamond Six 41L

AMGV 743983
Born: 3/16/2001 Semen: \$20

Black 88%

Quality Grade		QG	GPD
1	1		
Tenderness		T GPD	
2	1	1	-1.447
Feed Efficiency		FE GPD	

KCF BENNETT PREMIER Z104
MLLC M/L ADVANTAGE
CTR CEDAR TOP'S PERFECTA

SLC FREEDOM 178F ET
JOB DANELL TWICE FREE 8N
JOB DANELL O.J. 918L

CE	BW	WW	YW	M	TM	GL	CED	SC	REA	MB
107	0.2	50	102	13	38	-3.2	107	0.2	0.21	-0.06
.46	.70	.59	.37	.22		.57	.19	.35	.36	.28

EPDs for January 2010 **Homo Polled Homo Black**

Two highly used sire and dam pedigrees in M/L Advantage and Freedom to make this a confident genetic package. Low birth EPD and good growth in the making.

JOB Danell Montana Infusion

AMGV 955705
Born: 2/14/2005 Semen: \$30

Black 88%

Quality Grade		QG	GPD
1	1		
Tenderness		T GPD	
2	1	1	-1.447
Feed Efficiency		FE GPD	

MLLC M/L ADVANTAGE
MLLC M/L ENCORE
MLLC M/L MISS MIDNIGHT 333C

GKJ GRETA'S PROSPECT 616Z
CKA WOODLAND B ELBA 411D
CKA WOODLAND B ELBA 231B

CE	BW	WW	YW	M	TM	GL	CED	SC	REA	MB
100	1.8	52	94	13	39	-1.9	99	0.4	0.39	-0.05
.38	.66	.55	.36	.27		.33	.20	.22	.47	.41

EPDs for January 2010 **Homo Polled Homo Black**

Proven genetics behind this bulls pedigree. Balanced EPD's, good phenotype and muscle.

JOB Danell Montana Proud ET

AMGV 852974
Born: 2/21/2003 Semen: \$20

Black PB

Quality Grade		QG	GPD
0	1		
Tenderness		T GPD	
2	0	1	-1.098
Feed Efficiency		FE GPD	

VAA LEACHMAN NEW DAY 205B
SLC FREEDOM 178F ET
BB MISS 61Y

FHG FLYING H EXTRA 150D
JRI MS PLD EXTRA STEP 270J67
JRI MISS PLD SAVVY 270G57

CE	BW	WW	YW	M	TM	GL	CED	SC	REA	MB
101	2.1	43	66	-1	21	-3.6	105	-0.1	0.11	0.06
.54	.81	.73	.52	.47		.77	.41	.59	.53	.49

EPDs for January 2010 **Homo Polled Black**

Judd Ranch lost this beef packing machine. Limited Semen Supply! His birth to growth spread is phenomenal with an 84# birth, 205 day weight and 1345 on yearling weight. His fourth calf dam at Judd Ranch ranks as one of the best black polled Dam of Merit females on the ranch with perfect teat/udder quality and a big-time 106 weaning ratio on her calves.

JRI Black N Stacked 270M78

AMGV 805943
Born: 2/4/2002 Semen: \$40

Black PB			
Genesis	Quality Grade	QG GPD	
	0	0	
	Tenderness	T GPD	
2	0	0	-0.698
Feed Efficiency	FE GPD		

KCF BENNETT PREMIER Z104
FHG FLYING H EXTRA 150D
FHG MS FHG NITE LADY 50A

HHF POLLED SUMMIT 648U
JRI MS POLLED SWEETIE 285C6
JRI MS PLD PREFERENCE 285A5

CE BW WW YW M TM GL CED SC REA MB
109 0.9 40 69 14 34 -1.3 105 1.4 0.24 -0.18
.75 .91 .87 .77 .63 .89 .59 .82 .75 .73

EPDs for January 2010 **Homo Polled Black**

If great cow families with perfect teat/udder systems are a necessity in your program this 2002 National Champion Bull is unmatched. Extra Exposure's dam, Polled Sweetie, was the '95 National Champion Female with an enormous amount of rib, volume and fleshing ability along with a beautiful mammary system. Exposure's maternal grandam, 285A5, has been acclaimed as one of the best females in the beef industry and she's also the dam of Grand Prix, the '96 National Champion Bull that ranks in the breeds top 10% for growth.

JRI Extra Exposure 285L71 ET



AMGV 757130
Born: 2/18/2001 Semen: \$20

Black PB			
Genesis	Quality Grade	QG GPD	
	Tenderness	T GPD	
Feed Efficiency	FE GPD		

JRI PLD FREE AGENT 125J3
JRI TOP SECRET 253M75 ET
JRI MS PLD FRONTIER 253J60

FHG FLYING H EXTRA 150D
JRI MS PD BLACKSTAR 270K75E
JRI MS PD BLK GEM 270E62 ET

CE BW WW YW M TM GL CED SC REA MB
106 -0.3 41 80 14 35 -5.4 102 0.8 0 -0.14
.25 .36 .31 .26 .17 .36 .14 .32 | |

EPDs for January 2010 **Multiple Polled Black**

Homozygous Polled DNA testing pending. 2009 Breeder's Choice Futurity Runner-Up Bull. Lead bull in Judd Ranch '09 National Champion Pen of 5 Bulls. 15 square inch yearling ribeye. Plus 4 marbling score... with 5 being the maximum score. Incredible birth to growth spread on Secret Service's Dam of Merit dam's seven calves 82# bw, 731# 205 day weight and five sons averaged 1,207 pounds on yearling weight.

JRI Secret Service 270U85



AMGV 1080013
Born: 2/1/2008 Semen: \$20

Black PB			
Genesis	Quality Grade	QG GPD	
	Tenderness	T GPD	
Feed Efficiency	FE GPD		

JRI PLD FREE AGENT 125J3
JRI TOP SECRET 253M75 ET
JRI MS PLD FRONTIER 253J60

FHG FLYING H EXTRA 150D
JRI MS PLD ANGEL 164K4
JRI MS EQUALIZER 164Y3

CE BW WW YW M TM GL CED SC REA MB
106 -0.2 38 73 15 34 -3.8 99 1.1 -0.05 -0.14
.27 .45 .35 .26 .16 .36 .13 .31 | |

EPDs for January 2010 **Multiple Polled Black**

Outcross black genetics featuring wide spread birth to growth in one complete package from one powerful cow family. Secret Weapon's super seven year old dam sports a calving ease 81 pound average birth weight on her seven calves while spreading growth at 708 pounds on 205 day weight. Grandam JRI Ms Equalizer 164Y3 was honored numerous times as Dam of Merit and Dam on Distinction female. Excellent marbling score - plus 4... with 5 being the maximum score. Well endowed with a 42.1 centimeter yearling scrotal circumference.

JRI Secret Weapon 164T5



AMGV 1032767
Born: 2/6/2007 Semen: \$20

Black PB			
Genesis	Quality Grade	QG GPD	
	Tenderness	T GPD	
Feed Efficiency	FE GPD		

FHG FLYING H EXTRA 150D
JRI EXTRA EXPOSURE 285L71 ET
JRI MS POLLED SWEETIE 285C6

JRI TOP SECRET 253M75 ET
JRI MS CAMEO 23P7
JRI MS FREE AGENT 23M6

CE BW WW YW M TM GL CED SC REA MB
110 -0.3 37 78 14 33 -2.9 105 1.2 0.11 -0.16
.26 .36 .30 .25 .18 .35 .16 .31 | |

EPDs for January 2010 **Multiple Polled Black**

Homozygous Polled DNA testing is pending. Straight Shooter offers you that super blend of calving ease coupled with performance plus growth in a moderate frame package. Straight Shooter set the gainability record at Jedd Ranch with a whopping 7.64 percent average daily gain. This Judd Ranch 23 cow family ranks among the all-time great cow families in the breed at spreading low birth to super growth with unmatched fertility. Straight Shooter's dam 23P7 features a calving ease 73 pound birth weight average on her calves with a 103 ww ratio, 114 yw ratio along with a fertility-plus 359 day annual calving interval.

JRI Straight Shooter 23T8



AMGV 1064957
Born: 8/16/2007 Semen: \$20

Black PB			
Genesis	Quality Grade	QG GPD	
	Tenderness	T GPD	
Feed Efficiency	FE GPD		

JRI PLD FREE AGENT 125J3
JRI TOP SECRET 253M75 ET
JRI MS PLD FRONTIER 253J60

JRI EXTRA EXPOSURE 285L71 E
JRI MSEXTRAIIMPRESSD254P625
JRI MS PD BLACKHILLS 254E52

CE BW WW YW M TM GL CED SC REA MB
106 0 35 73 15 33 -3.1 105 0.8 0.03 -0.18
.35 .59 .46 .26 .15 .58 .13 .32 | |

EPDs for January 2010 **Homo Polled Black**

Top selling bull in Judd Ranch's 2008 bull sale. 2008 Breeder's choice Futurity Runner-up Bull. Lead bull in Judd Ranch's '08 National Champion pen of 5 bulls. #1 Ribeye bull in the '08 Judd Ranch bull sale - 16.9 sq. in. yearling ribeye. Marbling score - plus 4... with 5 being the maximum score.

JRI Top Grid 254T725



AMGV 1032813
Born: 1/30/2007 Semen: \$25

Black PB

CE	BW	WW	YW	M	TM	GL	CED	SC	REA	MB
107	0	49	81	10	35	-0.2	109	0.6	0.15	-0.07
.53	.81	.73	.60	.34		.73	.27	.59	.55	.49

EPDs for January 2010 **Polled** **Homo Black**

KCF Bennett Acclaim L336

AMGV 780564
Born: 10/4/2001 Semen: \$20

Quality Grade	QG	GPD
Tenderness	T GPD	
Feed Efficiency	FE GPD	

KCF BENNETT HALLMARK E208
KCF BENNETT LANDMARK J377
KCF MISS VIRGINIAN A261

DFW BLACKJACK B538
KCF MISS BLACKJACK G243
KCF MISS HORIZON C126

Black PB

CE	BW	WW	YW	M	TM	GL	CED	SC	REA	MB
106	2.3	54	88	26	53	-1	111	1.1	0.17	-0.01
.67	.91	.87	.79	.71		.83	.63	.74	.86	.84

EPDs for January 2010 **Polled** **Black**

KCF Bennett Ideal G182

AMGV 565166
Born: 4/8/1997 Semen: \$20

Quality Grade	QG	GPD
0	0	
Tenderness	T GPD	
1	0	-0.349
Feed Efficiency	FE GPD	

KCF BENNETT TARGET A10
KCF BENNETT ARSENAL E123
KCF MISS PREMIER B88

KCF BENNETT VISION A302
KCF MISS VISION E43
KCF MISS HELAU Y167

Ideal is being proclaimed by many breeders across the country as one of the greatest female producing sires that there is. His daughters are extremely deep bodied and capacious, yet exhibit lots of fleshing ability and good udder quality.

Black PB

CE	BW	WW	YW	M	TM	GL	CED	SC	REA	MB
104	2	57	97	14	43	1.2	107	1.1	0.38	-0.1
.69	.91	.86	.80	.66		.85	.52	.79	.86	.84

EPDs for January 2010 **Polled** **Black**

KCF Bennett Landmark J377

AMGV 700584
Born: 11/15/1999 Semen: \$20

Quality Grade	QG	GPD
1	0	
Tenderness	T GPD	
1	0	-0.749
Feed Efficiency	FE GPD	

DFW BLACKJACK B538
KCF BENNETT HALLMARK E208
KCF MISS PREMIER C294

KCF VIRGINIAN
KCF MISS VIRGINIAN A261
KCF MISS FEATURE X148

Bennet Landmark was a very popular sire in 2008 and his progeny report and EPD strength are very impressive. Landmark's ultrasound data released by Knoll Crest Farms in the fall of 2003 ranked him as the #1 overall sire group for ribeye and marbling (IMF) the past two years.

Black PB

CE	BW	WW	YW	M	TM	GL	CED	SC	REA	MB
102	1.7	46	79	5	28	-0.9	106	0.1	-0.05	-0.08
.45	.80	.72	.51	.35		.73	.25	.48	.51	.45

EPDs for January 2010 **Homo Polled** **Black**

KIT Urlacher M28 ET

AMGV 794369
Born: 3/25/2002 Semen: \$25

Quality Grade	QG	GPD
0	0	
Tenderness	T GPD	
2	0	-1.098
Feed Efficiency	FE GPD	

SLC FREEDOM 178F ET
BTI RED ALERT 2077K
BTI LADY GRANITE 2001E ET

TLR COCOA 35C
KIT 64H2 ET
BETZ MAGIC MUFFIN F64

Urlacher combines the best of both the Lady Granite and Magic Muffin cow families. He has a great disposition and is siring lots of body depth and performance on a sound structure. Urlacher is big footed with bone.

Black PB

CE	BW	WW	YW	M	TM	GL	CED	SC	REA	MB
101	1.9	46	88	18	41	-3	107	0.2	-0.15	0
.54	.86	.80	.60	.56		.78	.40	.57	.71	.68

EPDs for January 2010 **Homo Polled** **Homo Black**

KMF Fast Anchor 35H

AMGV 622431
Born: 3/12/1998 Semen: \$20

Quality Grade	QG	GPD
Tenderness	T GPD	
Feed Efficiency	FE GPD	

KCF BENNETT ANCHOR B227
WAC PLAINES' ANCHOR 1-503EE
WAC DAISY MAE 015C

POW MR MIDNITE 130C
KMF MISS MIDNITE 45E
KMF 245C

Fast Anchor is fast to catch the attention of many breeders. He has a smooth and eye appealing pattern along with a good set of EPDs. Reports of low birth weights and calves that show a lot of early growth. A good pedigree, combined with homozygous black and polled, make this bull look attractive for the upcoming breeding season.

Black PB

GeneStar	Quality Grade		QG GPD
	0	0	
	Tenderness		T GPD
	2	0	0
Feed Efficiency		FE GPD	
			-0.698

CE	BW	WW	YW	M	TM	GL	CED	SC	REA	MB
100	3.1	53	89	12	39	-1.4	101	0.4	0.33	0.01
.28	.53	.39	.15	.14		.21	.11	.10	.28	.20

EPDs for January 2010 **Homo Polled Homo Black**
 2009 New Sire listing. Outcross to many of the popular black sires.
 Tremendous carcass EPD strength. Special introductory semen price.

MLLC M/L ENCORE
 JOB DANELL MONTANA PROUD E
 CKA WOODLAND B ELBA 411D

JBOB BLACK IMAGE
 LWHF TRISHA HB ET
 JNS MISS NITE TRAIN 7C ET

LWHF American Pride

AMGV 939878
 Born: 2/23/2005 Semen: \$20

Black PB

GeneStar	Quality Grade		QG GPD
	Tenderness		T GPD
Feed Efficiency		FE GPD	

CE	BW	WW	YW	M	TM	GL	CED	SC	REA	MB
104	2.7	53	84	10	37	1.1	102	0.5	0.02	0.02
.34	.66	.56	.42	.29		.24	.20	.23	.51	.45

EPDs for January 2010 **Double Polled Homo Black**
 Homo black/Homo polled
 Performance sire that will add muscle and substance
 Calves perform both in feed lot and show ring

JCGR BAR GT EINSTEIN
 HAD KNOCKOUT
 HAD ANNELESE A018ET

ELK CK NIGHT TRAIN POLL 28Z
 JNS MISS NITE TRAIN 7C ET
 JNS MS TELESIS 1161K A38 ET

LWHF Santana ET

AMGV 805268
 Born: 3/9/2002 Semen: \$20

Black PB

GeneStar	Quality Grade		QG GPD
	2	0	0
	Tenderness		T GPD
	1	0	1
Feed Efficiency		FE GPD	
			-0.749

CE	BW	WW	YW	M	TM	GL	CED	SC	REA	MB
105	0.6	47	93	8	32	1.2	107	-0.4	0.13	0.08
.71	.92	.87	.79	.57		.89	.48	.77	.71	.68

EPDs for January 2010 **Homo Polled Homo Black**
 Visa combines calving ease and growth potential, not to mention maternal strength. Out of an outstanding Polled Midnight daughter that is big volumed and heavy milking. Use VISA to keep calves black, polled, and add tremendous performance, muscle dimension, and eye appeal. 5.61 for "GM" (Grid Merit EPD: expressed in dollars, carcass merit value passed to progeny) is in the top 4% of the breed.
 25.06 for FM (Feedlot Merit EPD, expressed in dollars, feedlot value passed on to progeny) is in the top 1% of the breed.

KCF BENNETT PREMIER Z104
 MLLC M/L ADVANTAGE
 CTR CEDAR TOP'S PERFECTA
 BEA POLLED MIDNIGHT
 MLH MISS GOLDRUSH F42
 OVF 114A

MLH Goldrush Visa J40

AMGV 656554
 Born: 2/4/1999 Semen: \$22

Black PB

GeneStar	Quality Grade		QG GPD
	2	1	0
	Tenderness		T GPD
	2	1	1
Feed Efficiency		FE GPD	
			-1.447

CE	BW	WW	YW	M	TM	GL	CED	SC	REA	MB
102	1.8	51	100	10	36	-0.2	106	-0.1	0.07	0.04
.47	.81	.72	.50	.19		.76	.15	.53	.31	.22

EPDs for January 2010 **Homo Polled Homo Black**
 Strait Forward is a new and exciting bull who owns excellent EPDs across the board, plus he's linebred to Goldrush Visa to provide more consistency to a breeding program. Strait Forward will add body depth, performance and style.
 Do you need added carcass merit? A 7 star DNA tested with phenotype.

MLLC M/L ADVANTAGE
 MLH GOLDRUSH VISA J40
 MLH MISS GOLDRUSH F42

MLH GOLDRUSH VISA J40
 MLH MISS GOLDRUSH M99
 MLH MISS GOLDRUSH H9

MLH Strait Forward R89

AMGV 935636
 Born: 3/5/2005 Semen: \$25

Black PB

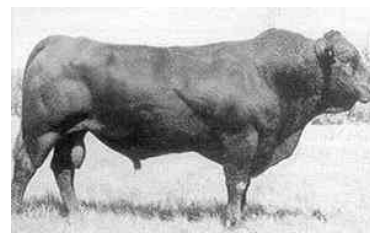
GeneStar	Quality Grade		QG GPD
	Tenderness		T GPD
Feed Efficiency		FE GPD	

CE	BW	WW	YW	M	TM	GL	CED	SC	REA	MB
108	-0.2	41	84	22	43	-1.8	108	-0.1	0.24	0.13
.79	.92	.89	.81	.80		.88	.71	.77	.85	.83

EPDs for January 2010 **Homo Polled Homo Black**
 The trait leader specialist - calving ease, birth weight, weaning weight, yearling weight, milk, and gestation length. What more can a sire do? Homozygous black, homozygous polled, good and he will add dollars to your calves.

KCF VIRGINIAN
 KCF BENNETT PREMIER Z104
 GAA GARST COW R9599

AAA TOM HORN
 CTR CEDAR TOP'S PERFECTA
 CTR 863X

MLLC M/L Advantage

AMGV 375086
 Born: 3/19/1993 Semen: \$20

Black PB			
Quality Grade		QG GPD	
1	0		
Tenderness		T GPD	
1	0	1	-0.749
Feed Efficiency		FE GPD	

KCF BENNETT PREMIER Z104
MLLC M/L ADVANTAGE
CTR CEDAR TOP'S PERFECTA

BEA POLLED MIDNIGHT
MLLC M/L MISS MIDNIGHT 333C
BCL GINGER

CE	BW	WW	YW	M	TM	GL	CED	SC	REA	MB
113	-1.4	32	72	16	32	-3.4	107	0.6	0.34	-0.06
.79	.91	.88	.79	.74		.88	.63	.68	.82	.80

EPDs for January 2010 **Homo Polled** **Homo Black**

Notable offspring:
JBOB Carolina Hero 4659M ET - AI Sire
JOB Danell Diamond Six 41L - AI Sire
JOB Danell Montana Proud ET - AI Sire



MLLC M/L Encore
AMGV 477160
Born: 1/26/1995 Semen:\$ 25

Black PB			
Quality Grade		QG GPD	
0	1		
Tenderness		T GPD	
2	0	0	-0.698
Feed Efficiency		FE GPD	

GLT SENSATION'S DAY 21Y
VAA LEACHMAN NEW DAY 205B
VAA 023Z

FHG FLYING H CADILLAC 184C
MRCO CADILLAC LADY 541E
FHG FHG MS JOHN HENRY 125B

CE	BW	WW	YW	M	TM	GL	CED	SC	REA	MB
110	-0.8	44	77	28	50	-2.6	105	1.1	0.18	-0.19
.76	.91	.86	.74	.67		.84	.58	.72	.83	.81

EPDs for January 2010 **Polled** **Black**

New Direction sold for \$15,000 at the 2000 NWSS. He was talked about many times after the 2000 NWSS. He has the outcross genetics for many breeding programs. New Direction has the potential to add calving ease and great phenotype to your program with outstanding growth.



MRCO New Direction 905
AMGV 660727
Born: 3/11/1999 Semen:\$ 20

Black PB			
Quality Grade		QG GPD	
0	0		
Tenderness		T GPD	
2	0	0	-0.698
Feed Efficiency		FE GPD	

JEB POLLED GIZMO 17Z
SPUR BERETTA 703G
SPUR VANESSA 19E ET

FHG FLYING H EXTRA 150D
MSH 3H
MSH F23

CE	BW	WW	YW	M	TM	GL	CED	SC	REA	MB
100	3.4	45	84	16	39	-1	98	0.6	0.17	-0.23
.55	.85	.79	.67	.49		.76	.40	.61	.74	.71

EPDs for January 2010 **Double Polled** **Black**



MSH Flying H MSH Full Season
AMGV 801713
Born: 2/6/2002 Semen:\$ 30

Black PB			
Quality Grade		QG GPD	
0	0		
Tenderness		T GPD	
1	0	2	-1.149
Feed Efficiency		FE GPD	

MLLC M/L ADVANTAGE
FHG VVFG FLYING H EXCLUSIVE
FHG FLYING H CADISISTER 95E

DHW MR A34033E
OZZ CHA MICHELL 74L
OZZ MIDNIGHT SINGER 65H

CE	BW	WW	YW	M	TM	GL	CED	SC	REA	MB
112	-1.2	44	93	32	54	-1.7	109	0.7	0.2	0.14
.69	.89	.84	.68	.39		.85	.32	.59	.49	.42

EPDs for January 2010 **Homo Polled** **Homo Black**

Add up all the traits you look for in a bull and Governor covers all the bases. Muscular, phenotypically flawless package with excellent testicular development. Breed-leading EP_D strength for CE, BW, YW, TM, GL, GM and FM - all in the breeds top 25% or better.



OZZ EXT Governor 3N
AMGV 850450
Born: 1/14/2003 Semen:\$ 20

Black PB			
Quality Grade		QG GPD	
0	0		
Tenderness		T GPD	
2	0	0	-0.698
Feed Efficiency		FE GPD	

VAA LEACHMAN NEW DAY 205B
MRCO NEW DIRECTION 905
MRCO CADILLAC LADY 541E

KCF BENNETT IDEAL G182
OZZ IDEAL SWEET 56L
OZZ JET MILADY 150G

CE	BW	WW	YW	M	TM	GL	CED	SC	REA	MB
106	4	59	104	25	55	1.6	105	0.7	0.21	-0.1
.46	.81	.71	.47	.26		.72	.21	.46	.46	.40

EPDs for January 2010 **Homo Polled** **Homo Black**

This homo black and polled sire adds weight at weaning and yearling. Look at his volume and rib with the lower birth weights being reported.



OZZ Ideal Direction 8N
AMGV 849194
Born: 1/18/2003 Semen:\$ 20

Black PB

GeneStar	Quality Grade	QG GPD
	Tenderness	T GPD
	Feed Efficiency	FE GPD

SLC FREEDOM 178F ET
 TAU T G TY 313L
 TAU MS SLEEPY 920J
 MCJ RJ BLACK KNIGHT
 PCCI MS KNIGHT 6102F
 PCCI MS PADDY 976Y

CE	BW	WW	YW	M	TM	GL	CED	SC	REA	MB
107	1.8	58	93	9	38	-1.6	105	0.2	0.16	-0.1
.33	.67	.55	.34	.19		.35	.13	.40	.26	.18

EPDs for January 2010 **Polled Black**
 Spring 2005 New Sire Addition...2005 Reserve Division Champion IV Bull in Denver.

Member of Pearson Cattle Co. Champion Pen of 3 Bulls Denver 2004.
 Nursed powerful Black Knight/Paddy daughter with a 106 weaning ratio.
 Two-time Denver Champion with that Extra burst of beef, butt and guts.

PCCI Nitro 3161N



AMGV 848974
 Born: 4/9/2003 Semen:\$ 20

Black PB

GeneStar	Quality Grade	QG GPD
	Tenderness	T GPD
	Feed Efficiency	FE GPD

BTI EXTRA 2106K ET
 EGL PABLO R014 ET
 EGL FARAH ET
 CTR ECHO 575E
 BGGR RIGHTEOUS 009K
 BSW Z200

CE	BW	WW	YW	M	TM	GL	CED	SC	REA	MB
103	3.6	57	91	14	43	-2.2	104	0.4	0.19	-0.18
.01	.28	.26	.13	.12		.01	.01	.09		

EPDs for January 2010 **Homo Polled Homo Black**
 Very structurally correct. He covers his tracks everytime. He has a huge top and hind quarter with a very tight sheath. He is big boned and big footed. Plateau Gelbvieh, Peetz, Co.

PLA Cisco 1W



AMGV 1112447
 Born: 2/22/2009 Semen:\$ 20

Black PB

GeneStar	Quality Grade	QG GPD
	Tenderness	T GPD
	Feed Efficiency	FE GPD

VAA LEACHMAN NEW DAY 205B
 SLC FREEDOM 178F ET
 BB MISS 61Y
 XXB DREW 565K
 XXB MISS DREW 221M
 XXB MISS DATELINE 805G

CE	BW	WW	YW	M	TM	GL	CED	SC	REA	MB
106	2.4	37	69	12	31	-0.7	107	-0.1	0.17	-0.12
.52	.80	.71	.49	.31		.72	.26	.52	.51	.45

EPDs for January 2010 **Homo Polled Black**
 2005 Breeder's Choice Futurity Champion Bull - first semen available to the general public after Jan. 10, 2007. Topped 2005 National Gelbvieh Sale at \$33,000 and his first calf crop looks very impressive. Performance plus 960 pound 205 day weight off a superb first calf heifer and has a huge yearling scrotal circumference at 43 centimeters.

PMG Pegasus 01P



AMGV 888814
 Born: 1/9/2004 Semen:\$ 25

Black PB

GeneStar	Quality Grade	QG GPD
	Tenderness	T GPD
	Feed Efficiency	FE GPD

CSG ELK BLACK PLD KENO 26F
 ELK CK BRONCO 411G
 ELK 411D
 RKG MR WONDERFUL ET
 RAG MISS WONDERFUL
 ARO MS CARBON COPY B180P

CE	BW	WW	YW	M	TM	GL	CED	SC	REA	MB
107	1.6	46	86	11	34	-1.5	105	0.4	0.26	-0.11
.37	.67	.35	.26	.23		.32	.20	.19	.33	.27

EPDs for January 2010 **Homo Polled Homo Black**
 Black Hawk has been successfully shown across the country and has won many division championships. Very thick just like his former National Champion Dam. He posted a 857 WW & 1437 YW with 40+ cm scrotal. Homo polled and homo black.

RAG Black Hawk 90N ET



AMGV 878371
 Born: 10/13/2003 Semen:\$ 20

Black PB

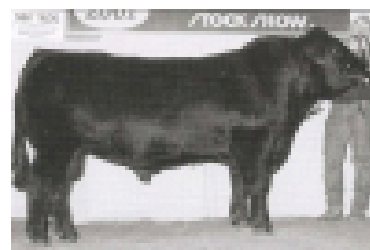
GeneStar	Quality Grade	QG GPD
	Tenderness	T GPD
	Feed Efficiency	FE GPD

KCF BENNETT PREMIER Z104
 FHG FLYING H EXTRA 150D
 FHG MS FHG NITE LADY 50A
 RKG MR WONDERFUL ET
 RAG MISS WONDERFUL
 ARO MS CARBON COPY B180P

CE	BW	WW	YW	M	TM	GL	CED	SC	REA	MB
102	3.1	36	58	19	37	0.7	101	0.3	0.16	-0.24
.68	.92	.87	.74	.70		.89	.55	.68	.80	.78

EPDs for January 2010 **Homo Polled Homo Black**
 Extra Wonderful had a great show record - Champion Bull at the 2000 American Royal, Division Champion at the 1999 NAILE and Reserve division winner at the 2000 NWSS. A son was Senior Champion at the 2001 NWSS. The Dam of Extra Wonderful was the Grand Champion Female at the 1997 NWSS. Extra Wonderful will transmit muscle and correctness.

RAG Mr Extra Wonderful ET



AMGV 650413
 Born: 9/18/1998 Semen:\$ 20

Black PB

Quality Grade		QG	GPD
0	0	0	2
Tenderness		T GPD	
1	0	1	-0.749
Feed Efficiency		FE GPD	

FHG VVFG FLYING H EXCLUSIV
FHG FLYING H EXCLUSIVE 041P
FHG FLYING H MS EXTRA 64M

JCGR BAR GT MACH ONE 54L
RCMP MISS REBECCA
JCGR BAR GT LADY LUCK 404L

CE	BW	WW	YW	M	TM	GL	CED	SC	REA	MB
101	2.6	46	88	22	45	-1.5	103	0.4	0.1	0.01
.25	.43	.31	.14	.10		.16	.08	.12		

EPDs for January 2010 **Polled Black**

RCMP Y2K SEBASTIAN is one of the most unique sires in the Gelbvieh breed. Sebastian bridges the gulf between rock solid carcass genetics, true performance, and show stopping phenotype. He sports a near perfect, 5.7 frame score, is a total outcross to Echo, Extra 2106, Bronco, and Carolina Fortune and is backed a dam who is the right size and with a perfect udder. His quiet, calm disposition is a huge plus. If your program needs fresh, new genetics, with a solid "carcass punch", you can't ignore Y2K SEBASTIAN.

RCMP Y2K Sebastian

AMGV 1004693
Born: 2/22/2006 Semen: \$20

Black PB

Quality Grade		QG	GPD
0	0	0	2
Tenderness		T GPD	
1	0	1	-0.749
Feed Efficiency		FE GPD	

BEA POLLED MIDNIGHT
TLR COCOA 35C
TLR MISS KAISER 449Y

KCF BENNETT PREMIER Z104
RTC 414D
RTC NUGGETTE 124A

CE	BW	WW	YW	M	TM	GL	CED	SC	REA	MB
110	-1.7	47	82	17	41	-0.5	111	0	0.13	-0.02
.87	.95	.93	.87	.83		.94	.75	.85	.90	.89

EPDs for January 2010 **Homo Polled Homo Black**

Atlas is a high trait leader for calving ease and weaning weight. He adds great phenotype with muscle and volume. Atlas' dam is a great maternal cow with a super udder. Atlas will add dollars with his black attractive progeny.

RTC Atlas 712G

AMGV 580562
Born: 2/20/1997 Semen: \$20

Black PB

Quality Grade		QG	GPD
0	0		
Tenderness		T GPD	
2	0	0	-0.698
Feed Efficiency		FE GPD	

FHG FLYING H EXTRA 150D
BTI EXTRA 2106K ET
BTI LADY GRANITE 2001E ET

ELK CK BRONCO 411G
DBRG FOXI ROXI 8N
DBRG MS FREEDOM 101L

CE	BW	WW	YW	M	TM	GL	CED	SC	REA	MB
104	-0.7	51	87	1	27	-2.6	107	0.4	0	-0.13
.39	.67	.55	.37	.20		.47	.17	.35	.32	.23

EPDs for January 2010 **Homo Polled Homo Black**

Rough and Ready was a crowd favorite at the 2006 National Show. He showed in the same Winter Bull Calf Division as the National Champion Bull and was honored as the Reserve Winter Bull Calf Champion. Young sire with unlimited genetic potential from one super proven cow family. Look at the excellent pedigree, very correct in type, lower birth plus homo black and polled.

RTRD Rough and Ready

AMGV 934316
Born: 2/6/2005 Semen: \$20

Black PB

Quality Grade		QG	GPD
0	0		
Tenderness		T GPD	
2	0	0	-0.698
Feed Efficiency		FE GPD	

FHG FLYING H EXTRA 150D
JRI EXTRA EXPOSURE 285L71 ET
JRI MS POLLED SWEETIE 285C6

BTI EXTRA 2106K ET
BTI MISS KALI B 2126M
BTI MISS KALI 2005K

CE	BW	WW	YW	M	TM	GL	CED	SC	REA	MB
109	0.4	34	63	7	24	-2.1	106	0.8	-0.01	-0.13
.50	.80	.63	.34	.19		.58	.18	.22	.34	.25

EPDs for January 2010 **Homo Polled Homo Black**

2006 Houston Stock Show Grand Bull. Unmatched pedigree: Extra Exposure, 2002 National Champion Bull and Miss Kali B, 2004 Reserve National Champion Female. Headline offers you tremendous muscle, depth of rib and flawless eye appeal.

RTRM Headline

AMGV 890202
Born: 2/4/2004 Semen: \$25

Black PB

Quality Grade		QG	GPD
0	0		
Tenderness		T GPD	
2	0	0	-0.698
Feed Efficiency		FE GPD	

FHG FLYING H EXTRA 150D
BTI EXTRA 2106K ET
BTI LADY GRANITE 2001E ET

XXB TITUS 880K
DARC P401
SLGB MISS POWER LINE

CE	BW	WW	YW	M	TM	GL	CED	SC	REA	MB
101	0.7	43	75	7	29	-3.6	106	0.7	0.01	-0.13
.42	.71	.57	.36	.17		.59	.14	.34	.31	.23

EPDs for January 2010 **Homo Polled Homo Black**

2007 Breeder's Choice Futurity Champion Bull in Denver. Incredible low birth (79 BW) to growth (864 WW) spread off a super first calf heifer. Solution's first calf crop produced the 2008 Nile Champion Female and this beauty topped the Montana Gelbvieh Association's State Sale. Semen on Breeder's Choice Futurity Champion Bulls is held off the open market for 2 years so the marks the first release of this powerful champion.

RTRT Solution

AMGV 979817
Born: 1/25/2006 Semen: \$20

Black PB

Quality Grade		QG GPD
0	0	
Tenderness		T GPD
1	0	1
Feed Efficiency		FE GPD

ATM TEJAS ROLLS ROYCH 868
 JEB POLLED GIZMO 17Z
 JEB MS. SENSATION 31X

BTI BACKDRAFT 2079B ET
 SPUR VANESSA 19E ET
 ARO MS SANDHILLER Z011P

CE	BW	WW	YW	M	TM	GL	CED	SC	REA	MB
101	2.3	41	68	21	42	-4.6	103	0.6	0.18	-0.37
.74	.92	.89	.79	.75		.88	.64	.78	.86	.84

EPDs for January 2010 **Homo Polled Black**

Beretta is an impressive individual having been selected the 1999 Breeders Choice Futurity Champion Bull at the Reserve Western Stock Show. His progeny are just as impressive with great structure and disposition to go with tremendous eye appeal. Beretta has made outstanding females for many years.

SPUR Beretta 703G

AMGV 594663
 Born: 9/20/1997 Semen: \$20

Black PB

Quality Grade		QG GPD
0	1	
Tenderness		T GPD
1	0	1
Feed Efficiency		FE GPD

GKT BOO BOO 155E
 GKT BUD 11G
 GKT KATIE

BTI BACKDRAFT 2079B ET
 SPUR VANESSA 19E ET
 ARO MS SANDHILLER Z011P

CE	BW	WW	YW	M	TM	GL	CED	SC	REA	MB
101	1.2	47	89	18	42	-3.5	102	0.3	0.38	-0.08
.65	.88	.81	.56	.60		.77	.51	.39	.69	.66

EPDs for January 2010 **Homo Polled Homo Black**

The pedigree says: good females are on the way. The lower birth to great growth is adding to this homo black and polled sires ability to produce outstanding progeny.

SPUR Kings Ransome 901J ET

AMGV 651478
 Born: 1/21/1999 Semen: \$25

Black PB

Quality Grade		QG GPD
0	0	0
Tenderness		T GPD
0	0	1
Feed Efficiency		FE GPD

LNR TRAITMAKER
 BEA POLLED MIDNIGHT
 BEA 411S

LNR KAISER
 TLR MISS KAISER 449Y
 TLR MS WITCHCRAFT 37W ET

CE	BW	WW	YW	M	TM	GL	CED	SC	REA	MB
100	1	55	103	24	52	-0.8	107	0.9	0.14	0.1
.83	.95	.93	.87	.86		.93	.79	.85	.92	.92

EPDs for January 2010 **Polled Black**

Cocoa has continued to be one of the more popular sires. The 1995 NWSS National Champion Bull has proven to have calving ease, great growth and add eye appeal to any program. This highly proven bull sires muscle, style, and correctness.

TLR Cocoa 35C

AMGV 405990
 Born: 3/1/1993 Semen: \$15

Black PB

Quality Grade		QG GPD
0	0	
Tenderness		T GPD
2	0	0
Feed Efficiency		FE GPD

TLR COCOA 35C
 RTC ATLAS 712G
 RTC 414D

KCF BENNETT BONUS F95
 WFA MISS BONUS 82L
 WFA FARIS MISS ROSEBUD 75J

CE	BW	WW	YW	M	TM	GL	CED	SC	REA	MB
103	2.7	62	103	18	49	-0.6	108	0.3	0.16	-0.08
.43	.75	.63	.44	.26		.52	.23	.47	.53	.49

EPDs for January 2010 **Homo Polled Homo Black**

Homozygous black, homozygous polled purebred. Awesome birth to growth spread - 85 birth, 864 weaning weight with a 1,421 yearling weight. Calving ease reports have been excellent. 2 Stars Tenderness. Line-bred calving ease genetics with unbelievable growth.

WFA Flying H Atlas 101N

AMGV 866825
 Born: 1/16/2003 Semen: \$25

Black PB

Quality Grade		QG GPD
0	0	0
Tenderness		T GPD
2	0	0
Feed Efficiency		FE GPD

FHG FLYING H CADILLAC 184C
 GKT BOO BOO 155E
 CCD X55

EVE MR BEAU JANGLES 308B
 EGL G565
 EGL D594

CE	BW	WW	YW	M	TM	GL	CED	SC	REA	MB
107	-0.3	35	68	22	40	-1.2	109	1.4	0.07	0.11
.78	.93	.90	.80	.73		.91	.61	.77	.86	.85

EPDs for January 2010 **Homo Polled Homo Black**

This homozygous black, homozygous polled 2001 Breeder's Choice Futurity Champion Bull is proving to be one of the best calving ease sires in the breed. Drew's dam is truly one of the black polled power females in the breed with a 118 weaning weight ratio, 117 yearling weight ratio and excellent teat/udder quality. The acceptance for Drew progeny across the breed has been sensational and his sons proving fantastic on gain test.

XXB Drew 565K

AMGV 699882
 Born: 1/7/2000 Semen: \$20

Black PB

CE BW WW YW M TM GL CED SC REA MB
 112 -2.4 34 66 16 33 -2.7 109 0.4 0.17 -0.19
 .64 .87 .80 .57 .47 .79 .38 .52 .62 .58

XXB Titus 880K



AMGV 745160
 Born: 12/28/2000 Semen: \$20

GeneStar	Quality Grade		QG GPD
	0	1	
	Tenderness		T GPD
2		0	0
Feed Efficiency		FE GPD	
		-0.698	

EPDs for January 2010 **Polled Black**
 Titus is the sire of the 2004 Breeder's Choice Futurity Champion as well as the Futurity Runner-Up. He's stamping his progeny with a great profile on an extra sound structure. Note the good calving ease numbers on Titus. Look for more outstanding progeny to appear out of this outstanding sire of champions.

VAA LEACHMAN NEW DAY 205B
 MRCO NEW DIRECTION 905
 MRCO CADILLAC LADY 541E
 CTR ECHO 575E
 DFW MISS ECHO J880
 DFW TEASER

Balancer 50%

CE BW WW YW M TM GL CED SC REA MB
 102 -1.1 40 93 17 37 -3.1 104 0.2 -0.15 0.16
 .50 .87 .80 .65 .35 .72 .26 .50 .65 .61

BTBR Mr Black Cross 3002N ET



AMGV 848137
 Born: 2/8/2003 Semen: \$18

GeneStar	Quality Grade		QG GPD
	0	0	
	Tenderness		T GPD
2		0	0
Feed Efficiency		FE GPD	
		-0.698	

EPDs for January 2010 **Hetero Polled Homo Black**
 Large spread birth to growth. A balancer with good from both worlds. 1/2 interest sold for \$21,000 through the Seedstock Plus Program.

B/R NEW DESIGN 036
 BON VIEW NEW DESIGN 1407
 BON VIEW PRIDE 664
 ELK CK BRONCO 411G
 BTBR MS DOLLY 1211L
 BTBR MS BLACK CROSS 4116D

Balancer 50%

CE BW WW YW M TM GL CED SC REA MB
 106 -2.4 35 72 18 36 -3.1 105 0.5 0.53 0.1
 .46 .79 .70 .43 .27 .66 .17 .40 .56 .53

Buck 's Carolina Rock'n 251L



AMGV 794476
 Born: 11/25/2001 Semen: \$18

GeneStar	Quality Grade		QG GPD
	Tenderness		T GPD
Feed Efficiency		FE GPD	

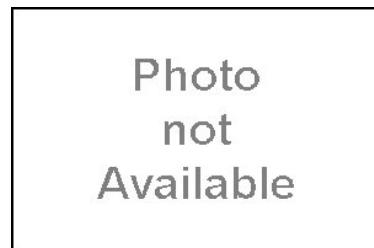
EPDs for January 2010 **Homo Polled Homo Black**
 Look at the low birth EPD and a pedigree for great females.

PARAMONT AMBUSH 2172
 ROCKN D AMBUSH 1531
 MS BLACKCAP BAND OF R D 130
 CTR ECHO 575E
 JBOB 2417J ET
 JBOB MISS 92C

Balancer 50%

CE BW WW YW M TM GL CED SC REA MB
 99 2 51 98 26 52 -0.4 102 0.8 0.01 0.11
 .29 .61 .40 .31 .17 .24 .12 .30 | |

CTR About Time 5548R



AMGV 971415
 Born: 4/24/2005 Semen: \$20

GeneStar	Quality Grade		QG GPD
	Tenderness		T GPD
Feed Efficiency		FE GPD	

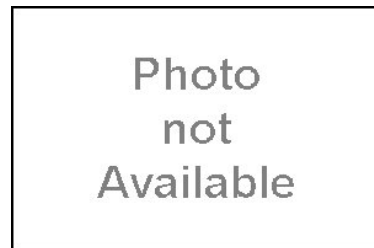
EPDs for January 2010 **Polled Black**
 Maternal brother to CTR Sandman 6523S but with more maternal. Great cow family with flawless dam. 198L has produced three sale toppers for Cedar Top Ranch. 5548 will add length, fix dispositions and structural problems.

SITZ TRAVELER 8180
 SITZ ALLIANCE 6595
 SITZ BARBARAMERE JET 2698
 JBOB CAROLINA CPR
 CTR 198L
 CTR CEDAR TOP'S 344C

Balancer 50%

CE BW WW YW M TM GL CED SC REA MB
 106 -2.6 34 71 20 37 -1.6 101 0.1 0.03 -0.01
 .31 .61 .34 .23 .08 .25 .09 .26 .17

CTR Benchmark 5509R



AMGV 971247
 Born: 3/27/2005 Semen: \$15

GeneStar	Quality Grade		QG GPD
	Tenderness		T GPD
		2	
Feed Efficiency		FE GPD	

EPDs for January 2010 **Polled Homo Black**
 Benchmark is a calving ease bull. His first progeny are exciting as they are right in kind. Produced top bulls at Cedar Top Ranch and Thorstons in 2008. Moderate thick and wide based describe the progeny with calving ease to boot.

C A FUTURE DIRECTION 5321
 STEVENSON BENCHMARK N190
 STEVENSON ELGA L706
 CTR ECHO 093K
 LAMM NINE OF DIAMONDS 331N
 XXB MISS BEAU DILLON 031K

Balancer 38%

Quality Grade	QG GPD
Tenderness	T GPD
Feed Efficiency	FE GPD

ALBERDA TRAVELER 416
J D ALBERDA CLIPPER 019
J D MISSY CHLOE 8422

DBC BLACK DIAMOND 96C
CTR 9009J
CTR 6102F

CE BW WW YW M TM GL CED SC REA MB

102 0.3 39 84 23 43 -1.7 103 0.6 0.03 0.13

.01 .35 .28 .20 .11 .01 .01 | | |

EPDs for January 2010 **Double Polled Homo Black**

Growth, fleshing ability and a stack of positive carcass in his pedigree. Balanced trait bull. Use this lower % bull to increase fleshing ability in your cow herd. Will add much improved carcass. 38%

CTR Clipper 4818P

Photo
not
Available

AMGV 920982

Born: 4/30/2004 Semen: \$15

Balancer 50%

Quality Grade	QG GPD
Tenderness	T GPD
Feed Efficiency	FE GPD

CONNEALY FOREFRONT
CONNEALY FRONT PAGE 0228
EBONY LIT OF CONANGA 840

MCJ RJ HIGHLIGHT 732H
CTR 320N
CTR 900J

CE BW WW YW M TM GL CED SC REA MB

107 -3.3 30 73 20 35 -1.5 104 -0.1 0.1 0.04

.33 .64 .50 .29 .11 .25 .07 .04 | | |

EPDs for January 2010 **Polled Homo Black**

Proven calving ease bull. Very safe for virgin heifers. Progeny are very attractive and will excel in the show ring. Use this bull to clean up cattle and add style like no other balancer.

CTR Front Page 5507R

Photo
not
Available

AMGV 971234

Born: 3/9/2005 Semen: \$20

Balancer 50%

Quality Grade	QG GPD
Tenderness	T GPD
Feed Efficiency	FE GPD

CONNEALY FOREFRONT
CONNEALY FRONT PAGE 0228
EBONY LIT OF CONANGA 840

DCG POWERSTROKE G92
DFW TWILIGHT
DJS 27H

CE BW WW YW M TM GL CED SC REA MB

109 -2 38 79 19 38 -1.3 103 0 0.09 0.02

.01 .35 .23 .13 .10 .01 .01 | | |

EPDs for January 2010 **Polled Black**

Popular balanced trait bull at the 2009 Cedar Top Ranch bull sale. Tremendous producing dam. 765T will add muscle, shape and correctness to progeny.

CTR Front Page 765T

Photo
not
Available

AMGV 1086273

Born: 5/4/2007 Semen: \$20

Balancer 50%

Quality Grade	QG GPD
Tenderness	T GPD
Feed Efficiency	FE GPD

EGR ELLISON 608F
CTR GOOD NIGHT 4743P
CTR SUSAN 2907

SITZ ALLIANCE 6595
CTR POLL STAR 5160E
CTR 028K

CE BW WW YW M TM GL CED SC REA MB

110 -1.4 40 83 22 42 -1.7 105 0.5 0.04 0.04

.24 .35 .29 .22 .09 .17 .09 .07 | | |

EPDs for January 2010 **Homo Polled Homo Black**

Topped the 2009 Cedar Top Ranch bull sale at \$9,800.00. A proven, time tested cow family. Generations stacked for elite females with do ability, volume, femininity and super udders. A bull that covers all bases. Igenity scores: Tenderness 6, Fat Thickness 4, Yield Grade 5, Ribeye Area 6, Avg. Daily Gain 6, Percent Choice 6, Marbling Score 6. Owned by Cedar Top Ranch and Warner Beef Genetics

CTR Good Night 715T

AMGV 1086538

Born: 3/29/2007 Semen: \$20

Balancer 50%

Quality Grade	QG GPD
Tenderness	T GPD
Feed Efficiency	FE GPD

EGR ELLISON 608F
CTR GOOD NIGHT 4743P
CTR SUSAN 2907

CTR TRAVELER 0907K
CTR HEROINE 5173R
CTR HEROINE 2130M

CE BW WW YW M TM GL CED SC REA MB

109 -1.4 36 77 14 32 -1.8 106 0.6 0.04 0.04

.25 .35 .29 .21 .09 .17 .09 .08 | | |

EPDs for January 2010 **Homo Polled Homo Black**

If you need moderation this is the bull. He is a truck. Admired by many commercial cattlemen seeking wide based genetics in a calving ease package. Elite cow family.

CTR Good Night 728T

Photo
not
Available

AMGV 1086575

Born: 4/5/2007 Semen: \$20

Balancer 50%

GeneStar	Quality Grade	QG GPD
	Tenderness	T GPD
	Feed Efficiency	FE GPD

KCF BENNETT IDEAL G182
KCF BENNETT KINGPIN K403
KCF MISS BONUS H321

CE BW WW YW M TM GL CED SC REA MB

108 1.2 46 84 15 38 -1.2 104 .4
.26 .49 .37 .27 .12 .15 .10 .13

EPDs for January 2010 **Homo Polled Homo Black**

Daughters are calving with tremendous udders and milk flow. They are wide based, moderate females that are the efficient kind.

CTR Kingpin 4751P

Photo
not
Available

AMGV 921250

Born: 4/17/2004 Semen: \$15

Balancer 50%

GeneStar	Quality Grade	QG GPD
	Tenderness	T GPD
	Feed Efficiency	FE GPD

D H D TRAVELER 6807
S S TRAVELER 6807 T510
S S MISS HI SPADE A114

JBOB CAROLINA CPR
CTR 012K
CTR CEDAR TOP'S 3019C

CE BW WW YW M TM GL CED SC REA MB

109 -3.3 43 100 19 41 -1.1 103 0.3 0.05 0.07
.56 .78 .68 .42 .22 .47 .19 .35 .22 .14

EPDs for January 2010 **Polled Homo Black**

Low birth coupled with scale crushing weaning and yearling weights. He sires long, loose, free moving big rough country covering bulls and females that are moderate at first calf with incredible udders. 2401 stems from a Dam of distinction cow family that never misses. Use this bull if balanced traits from birth to yearling are what you need. No other proven Balancer bull can put this EPD tabulation together. A no miss calving ease bull used for years on virgin heifers.

CTR Marbling 2401M

Photo
not
Available

AMGV 825867

Born: 3/1/2002 Semen: \$15

Balancer 50%

GeneStar	Quality Grade	QG GPD
	Tenderness	T GPD
	Feed Efficiency	FE GPD

PBSG BLACK TIE 123A
EGR ELLISON 608F
EGR D7

SITZ ALLIANCE 6595
CTR PRIMROSE 2917
C T R PRIMROSE C389

CE BW WW YW M TM GL CED SC REA MB

107 -1.4 29 65 20 35 -1.4 104 0.7 0.03 0.01
.22 .33 .28 .21 .13 .13 .10 .13 | |

EPDs for January 2010 **Polled Black**

CTR Momma Maker 4761P

Photo
not
Available

AMGV 921319

Born: 4/27/2004 Semen: \$15

Balancer 50%

GeneStar	Quality Grade	QG GPD
	Tenderness	T GPD
	Feed Efficiency	FE GPD

VERMILION DATELINE 7078
SITZ TRADITION RLS 8702
R L S EISA EVERGREEN 5018

JBOB CAROLINA CPR
CTR 198L
CTR CEDAR TOP'S 344C

CE BW WW YW M TM GL CED SC REA MB

101 1.5 60 103 17 47 -0.3 .7
.24 .57 .46 .20 .10 .09 .07

EPDs for January 2010 **Double Polled Black**

Without a doubt, the most impressive Balancer bull you see. Everyone who see Sandman immediately calls about semen. Time tested proven cow family. Dam CTR198L has produced three sale toppers for Cedar Top Ranch.

CTR Sandman 6523S

Photo
not
Available

AMGV 1030628

Born: 4/18/2006 Semen: \$20

Balancer 50%

GeneStar	Quality Grade	QG GPD
	Tenderness	T GPD
	Feed Efficiency	FE GPD

VC BUF CRK CHF 824-1658
BUF BFCK CHEROKEE CNYN 4912
MRM MRM 1431 8611 9109

DBC BLACK DIAMOND 96C
CTRG 527E
VHG T124

CE BW WW YW M TM GL CED SC REA MB

100 1.7 44 89 21 43 -0.5 96 0.5 0.33 0.14
.36 .77 .63 .46 .21 .24 .15 .45 | |

EPDs for January 2010 **Homo Polled Red**

3715 was the top bull in the 03 calf crop. A planned mating of one of the most proven cow lines in the Gelbvieh breed with almost perfect carcass and feedlot data. The sire is also the same on the Red Angus side of the equation with more data yet. Buy the sons with confidence if you sell cattle on a grid or you feed out your cattle in a feedlot. Considered a top sire for ERT's (Economic Relevant Traits).

CTR Tomahawk 3715N

AMGV 887864

Born: 3/27/2003 Semen: \$20

Balancer 50%

Quality Grade		QG GPD
Tenderness		T GPD
Feed Efficiency		FE GPD

D H D TRAVELER 6807
G D A R TRAVELER 011
G D A R PRIMROSE LADY 8209

MCJ BLACK HUSKER
KNS CTR 414D
JNE MISS JAY'S BLACK JACKIE

CE	BW	WW	YW	M	TM	GL	CED	SC	REA	MB
94	2.4	48	86	2	26	-1.5	103	1.5	0	0.1
.54	.88	.82	.66	.48		.67	.48	.49	.58	.54

EPDs for January 2010 **Homo Polled** **Homo Black**

Transmits, muscling, capacity, fleshing ability at the highest level. Nicknamed "Muscle" for his powerful phenotype. Simply, the most powerful Gelbvieh and/or Balancer bull. Words are not sufficient to describe the cattle. "Muscle" will be around for years to come and a household name among commercial producers wanting Balancers. 0907K cattle excel like no other on IMF scans.

CTR Traveler 0907K

AMGV 721347

Born: 3/10/2000 Semen: \$20

Balancer 50%

Quality Grade		QG GPD
Tenderness		T GPD
Feed Efficiency		FE GPD

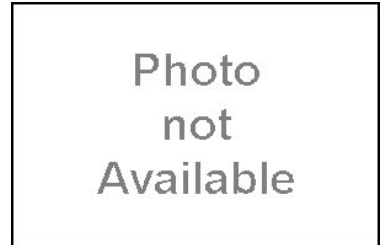
G D A R TRAVELER 011
CTR TRAVELER 0907K
KNS CTR 414D

CTRG RED DOG 50E
CTR 8148H

CE	BW	WW	YW	M	TM	GL	CED	SC	REA	MB
97	.9	44	80	7	29	-1.1	101	1.1	.02	.02
.23	.40	.30	.23	.16		.21	.14	.11		

EPDs for January 2010 **Homo Polled** **Black**

A planned mating that looks awesome. Carcass and cow longevity are tremendous.

CTR Traveler 3718N

AMGV 887873

Born: 3/28/2003 Semen: \$15

Balancer 50%

Quality Grade		QG GPD
Tenderness		T GPD
Feed Efficiency		FE GPD

BUF BFCK CHEROKEE CNYN 49
HXC LCC GRAVITY B252L
HXC HXC 950J

MAC MR VALHALLA 554J ET
DLW MS FINANCE 583R
DLW MS CONVERTER 006K

CE	BW	WW	YW	M	TM	GL	CED	SC	REA	MB
106	-0.7	41	80	13	34	-1	101	0.6	0.2	-0.02
.01	.29	.21	.10	.08		.01	.01			

EPDs for January 2010 **Polled** **Red**

Red power is a basic, functional bull with mass that commercial cattlemen are seeking. Great disposition. Use Red Power to make gentle, moderate, easy fleshing females with milk in line for efficient, fertile momma cows.
Igenity - Tenderness 4, Ribeye Area 4, Marbling 7, Yield Grade 6, Percent Choice 7, Fat Thickness 5, Stayability 5.

DLW Red Power 583U

AMGV 1072061

Born: 2/4/2008 Semen: \$25

Balancer 50%

Quality Grade		QG GPD
Tenderness		T GPD
Feed Efficiency		FE GPD

JRI EXTRA EXPOSURE 285L71 E
JRI GREAT WESTERN 254N68 ET
JRI MS P BLACKBERRY 254K55E

RITO 616 OF 4B20 6807
LYONS DELIA BEAUTY 2028
LYONS DELIA BEAUTY 0301

CE	BW	WW	YW	M	TM	GL	CED	SC	REA	MB
112	-3	35	75	14	32	-1.3	104	0.4	0.12	0
.24	.43	.32	.12	.09		.12	.07	.06	.14	.11

EPDs for January 2010 **Homo Polled** **Homo Black**

2008 National Champion Balancer Bull at the Denver Stock Show. Pedigree features breed-leading Gelbvieh and Angus genetics. Incredible fleshing ability, depth and muscle shape in a moderate framed flawless made package. His excellent testicular development spells fertility plus sons and daughters.

EBY Western Hauler 028S

AMGV 1007861

Born: 4/5/2006 Semen: \$25

Balancer 50%

Quality Grade		QG GPD
Tenderness		T GPD
Feed Efficiency		FE GPD

EGL NORTHERN EXPOSURE J17
EGL NORTHERN WIND P068 ET
EGL OLIVIA J811 ET

NORTHERN IMPROVEMENT 448
EGL MISS IMPROVEMENT 3266
EGL 0306

CE	BW	WW	YW	M	TM	GL	CED	SC	REA	MB
108	0.5	41	79	18	39	-0.7	104	0.6	0.2	0.02
.31	.69	.51	.34	.10		.49	.08	.29	.24	.15

EPDs for January 2010 **Homo Polled** **Homo Black**

EGL Old Iron Nuts S84Z

AMGV 1005445

Born: 3/13/2006 Semen: \$20

Balancer 50%

Quality Grade		QG GPD		
0	0	2	1	15.69
Tenderness		T GPD		
2	1	1	-1.447	
Feed Efficiency		FE GPD		

BON VIEW NEW DESIGN 1407
EGL TARGET 1148
EGL 9420

TLR COCOA 35C
EGL L280
EGL H228

CE BW WW YW M TM GL CED SC REA MB
107 -0.7 49 105 18 43 -2.8 105 0.3 -0.08 0.31
.70 .86 .77 .51 .20 .82 .16 .41 .54 .52

EPDs for January 2010 **Homo Polled Homo Black**

Tenderloin's individual low birth to growth spread was phenomenal. One of the top IMF bulls in the Eagle Pass Ranch's '04 Bull Sale with a 119 IMF ratio and check-out his impressive GeneSTAR DNA for Tenderness.

EGL Tenderloin N407

AMGV 855307
Born: 2/25/2003 Semen: \$20

Balancer 25%

Quality Grade		QG GPD		
0	0			
Tenderness		T GPD		
2	0	2	-1.498	
Feed Efficiency		FE GPD		

SITZ TRAVELER 8180
S A V 8180 TRAVELER 004
BOYD FOREVER LADY 8003

O C C ANCHOR 771A
GGGR 3G COWGIRL 351N
GGGR 3G COOKIE 421D

CE BW WW YW M TM GL CED SC REA MB
99 1.3 45 94 18 41 -0.9 102 0.2 0.11 0.05
.23 .56 .41 .18 .12 .32 .07 .03 | |

EPDs for January 2010 **Homo Polled Homo Black**

Smoke N' Mirrors brings a new dimension to the Balancer breed with his unsurpassed depth of rib, volume and capacity in one flawless package. He's wide-based, sound-footed with excellent testicular development. 2006 American Royal Reserve Grand Balancer Bull.

GGGE 3G Smoke N' Mirrors

AMGV 986778
Born: 2/5/2006 Semen: \$30

Balancer 75%

Quality Grade		QG GPD		
Tenderness		T GPD		
Feed Efficiency		FE GPD		

SLC FREEDOM 178F ET
GKG MR FREEDOM 206M ET
GKG MISS B FORCE 708G

NORTHERN IMPROVEMENT 448
GKG MS NI 312N
GKG MS BLACK FORCE 147L ET

CE BW WW YW M TM GL CED SC REA MB
105 -1.4 31 64 19 35 -2.9 105 0.3 -0.02-0.05
.37 .65 .53 .28 .11 .46 .08 .24 .22 .15

EPDs for January 2010 **Polled Black**

Harley is the most exciting young herd bull that's ever graced the pastures at Golden Image cattle. He gained 5 pound per day from weaning to yearling and turned in a 1500 adj. YW on a 6.3 frame. His scan data revealed a 19 square inch ribeye. Harley offers multiple mating options to produce black Purebred and Balancer calves!

GKG Harley

AMGV 937227
Born: 12/18/2004 Semen: \$30

Balancer 50%

Quality Grade		QG GPD		
Tenderness		T GPD		
Feed Efficiency		FE GPD		

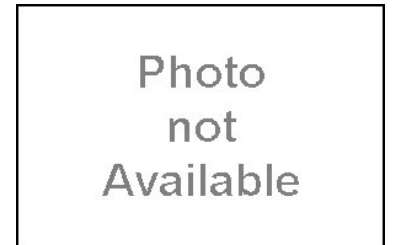
PAPA OPTIMA 9818
PAPA FORTE 1921
PAPA ENVIOUS BLACKBIRD 8832

CTR ECHO 575E
JBOB 2417J ET
JBOB MISS 92C

CE BW WW YW M TM GL CED SC REA MB
113 -2.3 31 67 21 37 -1 108 0.4 0.42-0.05
.37 .73 .58 .35 .15 .39 .22 .14 .22 .21

EPDs for January 2010 **Polled Black**

You can build superior bulls and females here. With proven Angus genetics and the famous Echo makes this a consistent package of attractive progeny.

JBOB Apache Warrior GC ET

AMGV 806965
Born: 1/16/2002 Semen: \$20

Balancer 50%

Quality Grade		QG GPD		
0	0			
Tenderness		T GPD		
2	0	0	-0.698	
Feed Efficiency		FE GPD		

PARAMONT AMBUSH 2172
B C C BUSHWACKER 41-93
R C ANITA T BANDO 918903

CTR ECHO 575E
JBOB 3298K
JBOB MISS 92C

CE BW WW YW M TM GL CED SC REA MB
99 0.6 52 98 29 55 -2.6 103 0.7 0.31-0.06
.41 .73 .61 .23 .21 .34 .18 .14 .32 .25

EPDs for January 2010 **Homo Polled Homo Black**

Carolina 5003N is a great Balancer bull sired by the great Bushwacker bull who adds depth, fleshing ability and good carcass merit to his progeny. Bushwacker daughters are some of the best females around. The mating with this great JBOB Echo daughter produced a great one. Bushwacker with Echo puts the top genetics together making for great females less frame and a very attractive package.

JBOB Carolina 5003N ET

AMGV 880418
Born: 8/22/2003 Semen: \$20

Balancer 50%

Quality Grade		QG GPD
1	0	
Tenderness		T GPD
2	1	1
Feed Efficiency		FE GPD
		-1.447

N BAR EMULATION EXT
LEACHMAN RIGHT TIME
LEACHMAN ERICA 0025

CTR ECHO 575E
JBOB 3298K
JBOB MISS 92C

CE BW WW YW M TM GL CED SC REA MB
105 -1.5 30 75 31 46 -1.5 103 0.6 0.39-0.06
.44 .78 .67 .44 .23 .67 .20 .41 .34 .26

EPDs for January 2010 **Homo Polled Homo Black**

The complete package young Balancer sire that sold as the 2nd high selling bull in the Jbob Farms 2005 Bull Sale. His incredible dam, Jbob 3298K, topped the Jbob Farms Complete Dispersal at \$14,500. Awesome low birth to growth individual that scanned a 15.4 inch yearling ribeye and ratioed 123 on yearling IMF.

Leachman Right Time with Echo writes another win win to produce the keeping kind.

JBOB Carolina 5423P ET

AMGV 925186

Born: 8/18/2004 Semen: \$20

Balancer 50%

Quality Grade		QG GPD
Tenderness		T GPD
Feed Efficiency		FE GPD

CONNELLY LEADTIME
CONNELLY LEAD ON
ELIGENCE PLUS OF CONANGA

CTR ECHO 575E
JBOB 2308J ET
LDL LL MISS AUGUST

CE BW WW YW M TM GL CED SC REA MB
100 0.3 38 84 23 42 -2 104 0.4 0.18-0.07
.31 .59 .50 .32 .18 .17 .15 .19 | |

EPDs for January 2010 **Homo Polled Homo Black**

Carolina 5707R offers you that ultimate Balancer Genetic package. His sire Conneally Lead On is one of the top proven curvebenders in the Angus breed with over 10,000 progeny on record. 5707R's illustrious dam JBOB 2308J ET was the record high selling female in the J Bob Farms Complete Dispersal Sale. Maternal plus genetics with that added boost of beef, butt and guts.

JBOB Carolina 5707R ET

AMGV 931060

Born: 1/1/2005 Semen: \$20

Balancer 50%

Quality Grade		QG GPD
0	0	
Tenderness		T GPD
0	1	1
Feed Efficiency		FE GPD
		-0.749

N BAR EMULATION EXT
LEACHMAN RIGHT TIME
LEACHMAN ERICA 0025

CTR ECHO 575E
JBOB 2409J ET
JBOB MISS 92C

CE BW WW YW M TM GL CED SC REA MB
99 1.4 44 84 20 42 -2 101 0.8 0.14-0.12
.46 .81 .72 .51 .27 .68 .25 .41 .58 .54

EPDs for January 2010 **Homo Polled Homo Black**

4665M is an awesome 1/2 blood Balancer out of Angus maternal phenom, Right Time, who's one of the best udder and flesh improvers in the breed. Expect the best of both worlds when you sample 4665M this year.

JBOB J-Bob 4665M ET

AMGV 840675

Born: 11/28/2002 Semen: \$25

Balancer 75%

Quality Grade		QG GPD
Tenderness		T GPD
Feed Efficiency		FE GPD

JRI EXTRA EXPOSURE 285L71 E
RTRM HEADLINE
BTI MISS KALI B 2126M

EGL SLEEP NIGHTS 2179
EGL SARA R450
EGL N066 ET

CE BW WW YW M TM GL CED SC REA MB
105 0.1 36 74 12 30 -1.6 104 0.6 -0.02-0.06
.01 .30 .21 .13 .08 .01 .01 | | |

EPDs for January 2010 **Multiple Polled Multiple Blk**

Powerful '08 Louisville Reserve grand Balancer Bull... currently being tested for the homozygous lack, homozygous polled convenience factors. Sportspage's sire Headline is emerging as one of the top sires in the Gelbvieh breed. Sportspage's paternal sister JDPD Sonador 46S swept '08 Reserve National Champion Female honors and another paternal sister JDPD Rumor Hat It 407U swept the Louisville Grand Female honors. Double-bred calving ease genetics equipped with a surplus of eye appeal and pure beef.

JDPD Sportspage 450T

AMGV 1034825

Born: 3/14/2007 Semen: \$20

Balancer 50%

Quality Grade		QG GPD
Tenderness		T GPD
Feed Efficiency		FE GPD

C A FUTURE DIRECTION 5321
MORGANS DIRECTION 111 9901
MCC BARBIE 9901 5205 797

JRI PLD FREE AGENT 125J3
JRI MS SPECIAL AGENT 27P5
JRI 27Z4

CE BW WW YW M TM GL CED SC REA MB
107 -2.3 42 89 24 45 -1.9 104 0.2 0.14 0.02
.01 .36 .30 .24 .12 .01 .01 | | |

EPDs for January 2010 **Multiple Polled Black**

JRI Complete Package is a low birth, super growth bull out of a first calf Free Agent daughter. He posted a 76 BW, 792 WW, 1,480 YW, 39.2 cm yearling scrotal, 136 gain test ratio and 15.8 square inch yearling ribeye. This young sire shows promise for calving ease, good growth and eye appeal with correctness.

JRI Complete Package 27S2

AMGV 989062

Born: 1/25/2006 Semen: \$22

Balancer 50%

Quality Grade		QG GPD
Tenderness		T GPD
Feed Efficiency		FE GPD

C A FUTURE DIRECTION 5321
MORGANS DIRECTION 111 9901
MCC BARBIE 9901 5205 797

JRI EXTRA EXPOSURE 285L71 E
JRI MS SUGAR SWEET 285P992E
JRI MS SHOW N TELL 285L89 ET

CE BW WW YW M TM GL CED SC REA MB
110 -2 43 95 24 46 -2.2 105 0.5 0.24-0.01
.39 .70 .59 .42 .13 .52 .09 .46 .27 .19

EPDs for January 2010 **Multiple Polled Black**

This exciting young Balancer bull excels in all the Judd Ranch "Complete Package" traits. Eighty-four pound calving ease birth weight. Scalebusting 799 pound 205 day weight off a first calf heifer. Scale smashing 1,473 pound yearling weight. His 5.27 pound ADG ranked him third over-all of the entire 2006 spring calf crop. Curvebender is well endowed in the scrotal department with his 39 centimeter yearling measurement and he also ranked as one of the top yearling ribeye bulls at 15.1 square inches. His first calf dam has future donor female written all over her and her dam, grandam, great grandam and great, great grandam are all current leading donor

JRI Curvebender 285S22

AMGV 989086

Born: 1/29/2006 Semen:\$ 20

Balancer 50%

Quality Grade		QG GPD
Tenderness		T GPD
Feed Efficiency		FE GPD

S S TRAVELER 6807 T510
EGL SLEEP NIGHTS 2179
EGL 9038

JRI EXTRA EXPOSURE 285L71 E
JRI MS SUGAR PLUM 53S71
JRI MS TOP SECRET 53P61

CE BW WW YW M TM GL CED SC REA MB
106 1.4 43 99 19 41 -1.7 102 0.7 0.04-0.05
.01 .35 .29 .25 .11 .01 .01 | | |

EPDs for January 2010 **Double Polled Black**

One beef packing machine, phenotypically flawless made, young Balancer sire. Incredible 1,491 pound yearling weight/ 43.2 centimeter yearling scrotal. 2009 National Champion Pen of 3 Balancer bull champion. Enhancer should produce the scale busters... homozygous polled DNA pending.

JRI Enhancer 53U21

AMGV 1080057

Born: 1/28/2008 Semen:\$ 20

Balancer 50%

Quality Grade		QG GPD
Tenderness		T GPD
Feed Efficiency		FE GPD

C A FUTURE DIRECTION 5321
MORGANS DIRECTION 111 9901
MCC BARBIE 9901 5205 797

JEB POLLED GIZMO 17Z
JRI MS PLD ALL STAR 214K50
JRI MS PD NEW PERFORMER21

CE BW WW YW M TM GL CED SC REA MB
105 -1 35 71 27 45 -1.8 105 0 0.18-0.02
.01 .01 .01 .01 .01 .01 .01 | | |

EPDs for January 2010 **Homo Polled Black**

Cow power plus genetics featuring stacked generations of Dam of Merit females with teat/udder excellence. JRI Morgans Edition 214U25ET brings a new dimension to the Balancer breed with his flawless phenotype, depth of rib, volume and capacity. The Complete Package: Calving Ease-Growth-Carcass-Fertility.

JRI Morgans Edition 214U25ET

AMGV 1087238

Born: 1/27/2008 Semen:\$ 20

Balancer 50%

Quality Grade		QG GPD
Tenderness		T GPD
Feed Efficiency		FE GPD

SLC FREEDOM 178F ET
JRI PLD FREE AGENT 125J3
JRI MS PLD GRAND PRIX 125G3

CPH GLACIER LOGAN 210
LACY LACY MISS LOGAN 46G
LACY LACY ANNA HW 16E

CE BW WW YW M TM GL CED SC REA MB
120 -6.1 31 75 13 29 -1.3 110 0.8 -0.16-0.14
.59 .78 .69 .54 .30 .71 .26 .58 .32 .23

EPDs for January 2010 **Homo Polled Diluter Free**

This homozygous polled, diluter free Balancer bull has really developed into one powerful individual. Profit Agent ranks among the breed leaders for low birth and his sons and daughters feature unbelievable depth of rib and fleshing ease.

JRI Profit Agent 46N

AMGV 852366

Born: 3/6/2003 Semen:\$ 20

Balancer 50%

Quality Grade		QG GPD
Tenderness		T GPD
Feed Efficiency		FE GPD

SITZ ALLIANCE 6595
K C F BENNETT TOTAL
EXT OF CONANGA 6790

KCF BENNETT E185
KCF MISS HIGAIN J302
KCF MISS BLACKJACK G243

CE BW WW YW M TM GL CED SC REA MB
107 -0.7 35 79 18 36 -0.7 106 0.2 0.14 0.06
.41 .80 .72 .59 .22 .70 .18 .56 .55 .50

EPDs for January 2010 **Multiple Polled Homo Black**

Bennett N473 is one of the most exciting young bulls ever raised at Knoll Crest Farms. His individual stats for modest birth/growth are incredible and he posted a 5.17 #ADG (130 gain test ratio) If you use curve bending genetics N473 will work. He transmits depth, volume and clean sheath in an attractive package.

KCF Bennett N473

AMGV 890037

Born: 11/3/2003 Semen:\$ 20

Balancer 50%		CE	BW	WW	YW	M	TM	GL	CED	SC	REA	MB	KRT Lazy TV Second Class R87
Quality Grade		109	-3.3	48	93	25	49	-3.4	103	1.4	0.43	-0.02	
QG GPD		.47	.77	.68	.56	.18		.54	.14	.56	.36	.27	
Tenderness		EPDs for January 2010			Homo Polled			Red					
T GPD		Sire to Lazy TV Old School and 2009 Reserve Champion BHSS Gelbvieh Bull. 71 calves indexed 96 BW, 101 WW, 101 YW. Owned by Schafer Farms, Goodhue, MN, and Thorstenson Gelbvieh & Angus, Selby, SD.											
Feed Efficiency													
FE GPD													
BUF BFCK CHEROKEE CNYN 49 KRT LAZY TV CLASSIC M358 KRT K497 VC BUF CRK DYNAMICS 3820 KRT LAZY TV MS DYNAMICS L35 KRT LAZY TV J347													



AMGV 947498
Born: 2/23/2005 Semen: \$18

Balancer 75%		CE	BW	WW	YW	M	TM	GL	CED	SC	REA	MB	ICFG MCF Bruce Almighty 35PET
Quality Grade		105	0.2	51	94	18	44	-0.9	104	0.4	0.53	0.02	
QG GPD		.46	.75	.64	.46	.25		.42	.22	.22	.39	.31	
Tenderness		EPDs for January 2010			Homo Polled			Homo Black					
T GPD		2004 Popular NAILE Grand Champion, Billings, MT. Ten bull calves on 2007 Midland test are all above the group average! The only true outcross HP/HB Balancer bull on the market with proven sire and dam credentials. 77 lb is the average birth weight on 1st calf heifers.											
Feed Efficiency													
FE GPD													
R D R 1531 AMBUSH 1807 VRT LAZY TV BEETHOVEN K278 VRT LAZY TV H406 GKT BUD 11G MCFG 41K ET CTRG CEDAR TOP'S TIFFANY													



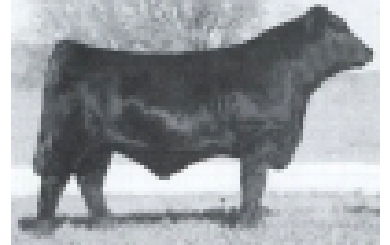
AMGV 899675
Born: 1/8/2004 Semen: \$20

Balancer 50%		CE	BW	WW	YW	M	TM	GL	CED	SC	REA	MB	:Minnville's Anchor (CMFS 62885)
Quality Grade		103	-1.3	40	80	18	38	-2.4	102	0.5	0.22	-0.08	
QG GPD		.16	.41	.32	.22	.16		.13	.13	1	.22	.20	
Tenderness		EPDs for January 2010			Polled			Black					
T GPD		O C C ANCHOR 771A PARTISOVER ANCHOR 948 PARTISOVER BURGESS 521 CTR ECHO 575E JBOB 2408J ET JBOB MISS 92C											
Feed Efficiency													
FE GPD													



AMGV 971704
Born: 1/30/2006 Semen: \$18

Balancer 50%		CE	BW	WW	YW	M	TM	GL	CED	SC	REA	MB	MLH F2 Trademark P3
Quality Grade		106	-1.2	45	88	11	34	-3.4	105	0.4	0.31	0.04	
QG GPD		.44	.67	.55	.37	.17		.58	.15	.36	.36	.28	
Tenderness		EPDs for January 2010			Homo Polled			Homo Black					
T GPD		FHG FLYING H EXTRA 150D JBOB CAROLINA BALANCER 2477 J BOB 1467 MLH GOLDRUSH VISA J40 MLH MISS GOLDRUSH M76 MISS GOLDRUSH G103											
Feed Efficiency													
FE GPD													



AMGV 891351
Born: 1/18/2004 Semen: \$8

Balancer 50%		CE	BW	WW	YW	M	TM	GL	CED	SC	REA	MB	MLH Goldrush Designer Genes
Quality Grade		101	-0.1	49	97	17	42	-1.7		0.8	0.21	0.07	
QG GPD		.34	.70	.57	.20	.09		.36		.17	.36	.31	
Tenderness		EPDs for January 2010			Homo Polled			Homo Black					
T GPD		A Maternal Brother to Straight Forward and your clear choice for semen on a Balancer bull. There is added carcass merit here to add to good EPD's, homo black and a good pedigree.											
Feed Efficiency													
FE GPD													
G T EXPO ISU IMAGING Q 9111 SUMMITCREST PRIDE 351F MLH GOLDRUSH VISA J40 MLH MISS GOLDRUSH M99 MLH MISS GOLDRUSH H9													



AMGV 982492
Born: 2/1/2006 Semen: \$25

Balancer 50%

Quality Grade		QG	GPD
0	0	0	2
Tenderness		T GPD	
2	1	2	
Feed Efficiency		FE GPD	
		-1.847	

G A R PRECISION 1680
G A R US PREMIUM BEEF
G A R EXT 2928

RTC ATLAS 712G
MLH MISS GOLDRUSH P11
MLH MISS GOLDRUSH M75

CE BW WW YW M TM GL CED SC REA MB
110 -3.7 28 70 17 31 -2.5 106 -0.5 0.14 0.02
.40 .65 .52 .29 .12 .50 .08 .14 .29 .21

EPDs for January 2010 **Homo Polled Homo Black**

Five star DNA... homozygous for 2 of the 3 tenderness genes. Incredible individual birth to growth spread... 73# birth weight/834# 205 day weight off first calf heifer. Cowman balanced EPD strength featuring top 4% low birth, top 20% weaning weight, top 10% yearling weight, top 30% total maternal and top 5% feedlot merit. Beef plus genetics featuring proven carcass merit on both sides of the pedigree.

MLH Goldrush Standard

AMGV 982519
Born: 1/17/2006 Semen: \$20

Balancer 50%

Quality Grade		QG	GPD
Tenderness		T GPD	
Feed Efficiency		FE GPD	

TWIN VALLEY PRECISION E161
BR MIDLAND
BR ROYAL LASS 7036-19

BEA POLLED MIDNIGHT
MLH MISS GOLDRUSH F42
OVF 114A

CE BW WW YW M TM GL CED SC REA MB
106 0.5 44 88 8 30 -1.6 105 -0.2 0 0.11
.20 .40 .34 .20 .16 .19 .15 .11 | |

EPDs for January 2010 **Homo Polled Homo Black**

Cow power plus genetics featuring super donor MLH Miss Goldrush F42. Outstanding individual low birth to super growth spread... 76 BW/81 WW. Impressive phenotype with unmatched genotype. The total package with superior carcass DNA.

MLH Levi S151 ET

AMGV 1012949
Born: 10/22/2006 Semen: \$20

Balancer 50%

Quality Grade		QG	GPD
Tenderness		T GPD	
Feed Efficiency		FE GPD	

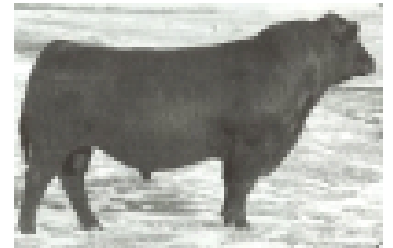
KRUGERRAND OF DONAMERE 4
TAU KRUGERRAND 70M
T G A PROMPTER 6807 557E

TLR COCOA 35C
TAU MS COCO 052KA 437D
TAU 437D

CE BW WW YW M TM GL CED SC REA MB
108 -1.4 51 99 18 44 -1.9 104 0.3 -0.04 0.07
.38 .79 .70 .39 .23 .40 .16 .11 .38 .31

EPDs for January 2010 **Homo Polled Homo Black**

Homozygous black, homozygous polled meat machine with flawless phenotype. Krugerrand is really adding mass, depth and soundness of structure to his progeny. Note Krugerrand's excellent widespread low birth to superb growth ratios in his progeny report. Powerful cow family with Krugerrands dam sporting a calving ease 95 BW ratio, 108 WW ratio, and a 110 YW ratio.

TAU Mr Krugerrand 70M 130P

AMGV 904079
Born: 2/20/2004 Semen: \$20

Balancer 50%

Quality Grade		QG	GPD
Tenderness		T GPD	
Feed Efficiency		FE GPD	

G A R GRID MAKER
TC GRID TOPPER 355
TC PRIDE 8067

SLC FREEDOM 178F ET
TAU MISS FREEDOM 306N
TAU MISS BLACKJACK 1101L

CE BW WW YW M TM GL CED SC REA MB
100 2.1 44 92 15 37 -1.5 .08 .05
.22 .52 .41 .14 .09 .08 .05

EPDs for January 2010 **Hetero Polled Homo Black**

One of the deepest sides, heaviest muscled bulls in the 2008 National Balancer Pen Bull Show in Denver. Tuned In exhibits a big 'ol top and scanned a 17 yearling ribeye. Homozygous black, multiple polled Balancer genetics loaded with muscle, capacity, soundness and eye appeal.

TAU Tuned In 55T

AMGV 1036181
Born: 2/5/2007 Semen: \$20

Balancer 50%

Quality Grade		QG	GPD
Tenderness		T GPD	
Feed Efficiency		FE GPD	

KRT LAZY TV CLASSIC M358
KRT LAZY TV SECOND CLASS R8
KRT LAZY TV MS DYNAMICS L35

VC BUF CRK CHF 824-1658
KRT K318
KRT LAZY TV C181

CE BW WW YW M TM GL CED SC REA MB
106 -1.5 43 91 24 46 -2.5 102 0.6 0.45 -0.01
.27 .51 .42 .26 .11 .18 .08 .30 .16 .13

EPDs for January 2010 **Polled Red**

Old School is one of the most complete red Balancer bulls I've seen. Exceptional depth of rib, heavy muscled in a package that moves phenomenally. His dam, with 6 calves, posts a BW ratio of 98, WW ratio of 106 and YW ratio of 103. He is currently being retested with Igenity.

VRT Lazy TV Old School T231

AMGV 1039590
Born: 3/10/2007 Semen: \$30

Balancer 50%

GeneStar	Quality Grade		QG	GPD
	0	0		
	Tenderness		T GPD	
	2	1	1	-1.447
GeneStar	Feed Efficiency		FE GPD	
	2	2	1	-3.2796

TWIN VALLEY PRECISION E161
BR MIDLAND
BR ROYAL LASS 7036-19

RAG MR EXTRA WONDERFUL E
XXB MISS EX WONDERFUL219M
EGL G565

CE	BW	WW	YW	M	TM	GL	CED	SC	REA	MB
96	3	27	61	18	32	-1.6	102	0.3	-0.1	0.06
.32	.67	.56	.37	.17		.48	.13	.17	.41	.35

EPDs for January 2010 **Homo Polled Black**
2005 National Champion Balancer Bull. Homozygous polled by DNA test. Carcass plus B/R Midland son out of XXB Drew 565K's maternal sister. Tremendous volume, sound structured individual with super balance.

XXB Midnight Cowboy 219N

AMGV 884080
Born: 12/25/2003 Semen:\$ 20

Balancer 50%

GeneStar	Quality Grade		QG	GPD
	0	0		
	Tenderness		T GPD	
	2	1	1	-1.447
GeneStar	Feed Efficiency		FE GPD	
	2	2	1	-3.2796

BON VIEW NEW DESIGN 1407
G A R INTEGRITY
G A R PRECISION 1019

EVE MR BEAU JANGLES 308B
EGL G565
EGL D594

CE	BW	WW	YW	M	TM	GL	CED	SC	REA	MB
103	-1.2	18	52	22	31	-0.8	103	0	0.13	0.18
.27	.58	.47	.31	.15		.23	.13	.16	.33	.26

EPDs for January 2010 **Homo Polled Black**
Substance - unmatched. Marbling - 4.35 IMF/125 ratio. Leanness - .26 Rib Fat.

XXB Notorious 816S ET

AMGV 975244
Born: 1/1/2006 Semen:\$ 25

Red PB

GeneStar	Quality Grade		QG	GPD
	0	0		
	Tenderness		T GPD	
	2	0	1	-1.098
GeneStar	Feed Efficiency		FE GPD	
	2	2	1	-3.2796

VAA LEACHMAN NEW DAY 205B
SLC FREEDOM 178F ET
BB MISS 61Y

POW BTI ZORRO 2143Z
BTI LADY GRANITE 2001E ET
KAB LADY GRANITE 432S

CE	BW	WW	YW	M	TM	GL	CED	SC	REA	MB
106	-0.1	46	82	-5	18	-5.9	108	-0.2	0.05	-0.18
.69	.90	.84	.70	.63		.84	.54	.66	.80	.78

EPDs for January 2010 **Homo Polled Red**
Red Alert is one of Freedom's most acclaimed sons. His dam is a tremendous brood cow, as she's extremely deep and bold sprung. Red Alert's calves look every bit as good as he does.

BTI Red Alert 2077K

AMGV 706072
Born: 2/27/2000 Semen:\$ 25

Red PB

GeneStar	Quality Grade		QG	GPD
	0	0		
	Tenderness		T GPD	
	1	0	0	-0.349
GeneStar	Feed Efficiency		FE GPD	
	2	2	1	-3.2796

TKN BUSTER 8N
GKT BUDDY 7R
GKT 54G

TJB JAGERMEISTER 229M - ET
CRAN R251
CRAN JARED'S GIRL M201

CE	BW	WW	YW	M	TM	GL	CED	SC	REA	MB
103	1.9	50	87	14	39	-2.5	102	0.6	0.22	-0.1
.30	.53	.42	.14	.09		.32	.07	.14	.14	.10

EPDs for January 2010 **Multiple Polled Red**
2008 Breeder's Choice Futurity Runner-up Bull. Tremendous low birth to super growth spread off a first calf heifer. Exceptionally thick, wide-made package sporting a 16 square inch yearling ribeye. Excellent combo of unmatched phenotype and carcass merit... Buddy Boy has an impressive Ingenuity report.

CRAN Buddy Boy T729

AMGV 1039981
Born: 2/20/2007 Semen:\$ 20

Red PB

GeneStar	Quality Grade		QG	GPD	
	0	0	0	1	5.29
	Tenderness		T GPD		
	1	0	0	-0.349	
GeneStar	Feed Efficiency		FE GPD		
	2	2	1	0	-3.2796

KCF BENNETT HORIZON
KCF BENNETT PACESETTER A16
KCF MISS SELECT Y60

JGW 3R RED SUMMIT 76Y ET
JGW 3R PLD WILMA 215A
JGW 3R WILMA 323Y ET

CE	BW	WW	YW	M	TM	GL	CED	SC	REA	MB
110	0.5	38	79	35	54	0.5	105	1.5	0.01	-0.11
.72	.90	.85	.72	.54		.86	.49	.67	.71	.67

EPDs for January 2010 **Homo Polled Diluter Free**
Homo polled and diluter free genetics in a very attractive sire. Maternal excellence - gorgeous udders and super easy fleshing.

DCSF Post Rock Top Brass ET

AMGV 652929
Born: 10/8/1998 Semen:\$ 20

Red PB

Quality Grade		QG GPD
0	0	
Tenderness		T GPD
2	0	2
Feed Efficiency		FE GPD
		-1.498

VAA LEACHMAN NEW DAY 205B
SLC FREEDOM 178F ET
BB MISS 61Y

EGL BULLSEYE C154 ET
EGL PHOEBE G374
AKR 349A

CE	BW	WW	YW	M	TM	GL	CED	SC	REA	MB
99	3.9	61	96	23	54	-3.3	104	0	0.17	-0.2
.58	.91	.85	.74	.65		.88	.51	.73	.82	.80

EPDs for January 2010 **Homo Polled Red**

Fosters topped the 2002 National Gelbvieh Sale at \$50,000 and his calves look great. His incredible dam is one of the all-time greats and Foster's ET full sisters won National Champion Female honors both in 2002 and 2003. Proven genetics with high growth, proven progeny champions and a good kind.

EGL Fosters LO17 ET

AMGV 765517
Born: 3/2/2001 Semen: \$25

Red PB

Quality Grade		QG GPD
Tenderness		T GPD
Feed Efficiency		FE GPD

GAA MAGNUM P.I.
FHG FLYING MAGNUM 47X
HAY HAY MISS P48

MRB 023S ET
DFW MS SHADOW U78
DGM MS. GOLD STANDARD 26R

CE	BW	WW	YW	M	TM	GL	CED	SC	REA	MB
107	1.5	35	62	16	34	0.1	106	-0.1	-0.21	-0.14
.64	.85	.77	.61	.57		.76	.46	.62	.73	.70

EPDs for January 2010 **Homo Polled Red**

Polled Pilgram is a homozygous polled son of ABS's Flying Magnum. He is diluter free and his EPS's show good calving ease without sacrificing growth. Pilgram is very thick, deep ribbed sire who should be an outcross sire for many herds. Use this older proven diluter free calving ease sire.

FHG Polled Pilgram 180A

AMGV 300788
Born: 3/24/1991 Semen: \$15

Red PB

Quality Grade		QG GPD
Tenderness		T GPD
Feed Efficiency		FE GPD

SLC FREEDOM 178F ET
HFGC HF ROSCOE 34P59 ET
HFGC MS PLD HART'S RUBY

KIT TABASCO J26 ET
MGA BARBARA 278M
MGA GI BARBARA 936J

CE	BW	WW	YW	M	TM	GL	CED	SC	REA	MB
102	2.3	45	78	17	40	-1.8	104	0.8	0.24	-0.13
.19	.34	.22	.11	.10		.13	.09	.09	.15	.12

EPDs for January 2010 **Double Polled Red**

Grand Champion Bull - 2007 & 2008 Missouri State Fair - Champion Senior Bull Calf - 2007 American Royal & 2008 National Gelbvieh

HFGC GIP Arrowhead S82

AMGV 1024957
Born: 9/10/2006 Semen: \$20

Red PB

Quality Grade		QG GPD
0	0	
Tenderness		T GPD
1	0	0
Feed Efficiency		FE GPD
		-0.349

FHG FLYING H EXTRA 150D
JRI EXTRA EXPOSURE 285L71 ET
JRI MS POLLED SWEETIE 285C6

KIT TABASCO J26 ET
MGA BARBARA 278M
MGA GI BARBARA 936J

CE	BW	WW	YW	M	TM	GL	CED	SC	REA	MB
105	2	42	71	17	38	-0.4	105	1.3	0.22	-0.12
.35	.56	.37	.19	.18		.35	.16	.18	.31	.23

EPDs for January 2010 **Homo Polled Diluter Free**

Homozygous polled, diluter free, total outcross Freedom genetics. Excellent genetic package featuring the beefmaker Extra Exposure on the top side of the pedigree and the famed Barbara cow family on the bottom side. A young sire that's really stamping his progeny with structural correctness and flawless phenotype. Extra Hot's performance plus dam sports a 106 weaning weight ratio.

HFGC GIP Extra Hot P60

AMGV 897101
Born: 5/20/2004 Semen: \$20

Red PB

Quality Grade		QG GPD
0	0	
Tenderness		T GPD
2	0	0
Feed Efficiency		FE GPD
		-0.698

VAA LEACHMAN NEW DAY 205B
SLC FREEDOM 178F ET
BB MISS 61Y

GAA GARST BULL Z138
HFGC MS PLD HART'S RUBY
IHF MISS NUGGET 34U

CE	BW	WW	YW	M	TM	GL	CED	SC	REA	MB
109	-1.5	38	73	14	33	-3.4	105	0.3	0.28	-0.22
.30	.50	.40	.24	.22		.30	.20	.20	.34	.26

EPDs for January 2010 **Homo Polled Red**

Roscoe's popularity is definitely on the rise with the powerful progeny he's producing. The beautiful Roscoe daughter photographed above was the high seller red heifer calf on the '07 Kansas/Nebraska "Pick of the Herds" Female sale. Roscoe's "JR" grandam IHF Miss Nugget 34U was one of the breeds all-time great Dam of Distinction producers with unbelievable longevity... 15 natural born calves.

HFGC HF Roscoe 34P59 ET

AMGV 897100
Born: 2/23/2004 Semen: \$20

Red PB

GeneStar	Quality Grade	QG GPD
	Tenderness	T GPD
	Feed Efficiency	FE GPD

VAA LEACHMAN NEW DAY 205B
SLC FREEDOM 178F ET
BB MISS 61Y


GAA GARST BULL Z138
HFGC MS PLD HART'S RUBY
IHF MISS NUGGET 34U

CE	BW	WW	YW	M	TM	GL	CED	SC	REA	MB
110	-2.1	34	67	19	36	-3.2	105	0.1	0.23	-0.24
.46	.72	.58	.36	.32		.53	.26	.32	.51	.46

EPDs for January 2010 **Polled** **Red**

Powerful 2003 Reserve National Champion Bull that should really produce beef, butt, guts and eye appeal. Ruben swept the 2002 Kansas State Fair; 2002 American Royal and climaxed his show career winning National Champion honors in Denver. Ruben's dam is proving to be one of the breeds elite donor females and Ruben's Dam of Distinction grandam, Nugget 34U, is still actively producing embryos at 17 years of age. Power packed genetics and the first progeny report spells calving ease plus superb growth.

HFGC HF Ruben 34L21



AMGV 771142
Born: 2/16/2001 Semen: \$20

Red PB

GeneStar	Quality Grade	QG GPD
	Tenderness	T GPD
	Feed Efficiency	FE GPD

DGA COWBOY
BMB STATESMAN P214
BMB MISS 16K


FLOTO
CPG MISS FLOTO PRIDE 187R
ELA MISS L182

CE	BW	WW	YW	M	TM	GL	CED	SC	REA	MB
104	4	37	67	21	40	1.4	105	0.3	-0.13	-0.1
.84	.96	.95	.90	.90		.95	.86	.89	.92	.91

EPDs for January 2010 **Homo Polled** **Red**

This homozygous polled sire's power is sweeping the country. His sons and daughters have topped as many-or more-sales as any red sire in the breed. Three sons in the '93 National Gelbvieh Sale averaged \$10,000, with a \$15,000 high. Polled Summit also sired the Champion Pen of Three and Champion Pen of Five Bulls at the '93 National Show. Summit repeated that feat by siring the Champion pen of Three at the '94 Nationals and that pen show is geared towards the commercial man. Polled Summit daughters carry his stamp of greatness, complete with a moderate frame, depth of rib and beautiful teat/udder combinations.

HHF Polled Summit 648U



AMGV 173081
Born: 9/28/1986 Semen: \$25

Red PB

GeneStar	Quality Grade	QG GPD
	Tenderness	T GPD
	Feed Efficiency	FE GPD

BMB STATESMAN P214
HHF POLLED SUMMIT 648U
CPG MISS FLOTO PRIDE 187R


EGF POLLER'S PRIDE
HHF W9 MISS GLORY 238M
LNR MISS FLOTO 238M

CE	BW	WW	YW	M	TM	GL	CED	SC	REA	MB
110	1.4	35	61	22	40	0.1	108	0.8	0.08	-0.12
.46	.78	.66	.47	.42		.62	.32	.51	.54	.50

EPDs for January 2010 **Homo Polled** **Red**

Thick, eye appeal, and great muscling. Out cross for many Gelbvieh breeders. Solid EPDs! Red and homozygous polled. A red sire well tested without a Freedom pedigree. They are thick, well muscled and have plenty of eye appeal.

HHF Summits Pride A36ET



AMGV 327936
Born: 9/20/1991 Semen: \$15

Red PB

GeneStar	Quality Grade	QG GPD
	Tenderness	T GPD
	Feed Efficiency	FE GPD

GKT BOO BOO 155E
GKT BUD 11G
GKT KATIE


PGRS SHINING SPIRIT
WRGA 049C
WRGA 041Z

CE	BW	WW	YW	M	TM	GL	CED	SC	REA	MB
101	1	46	83	13	36	-2.7	101	0.6	0.38	0.04
.77	.91	.87	.78	.64		.88	.59	.74	.81	.78

EPDs for January 2010 **Homo Polled** **Red**

Sold for \$11,000 for 50% interest at the "Spirit of the West" Jumping Cow Fall '99 Sale. 2nd in class to the eventual 2000 National Champion and Futurity Champion bull, Boo Ba. Sired by increasing popular 'Bud' bull - National and Futurity Champion! His dam, the Money Cow, is absolutely fault free. Money Cow - dam of \$6,00 Dawn heifer... good cows produce good offspring! Top producers in Denver appreciate his overall rib, thick top and rump, his deep twist, large quarter, and enormous square butt.

JCGR Bar GT Louie 2J



AMGV 656047
Born: 1/14/1999 Semen: \$25

Red PB

GeneStar	Quality Grade	QG GPD
	Tenderness	T GPD
	Feed Efficiency	FE GPD

HAD SLEEP TIGHT ET
JDPD ROLEX 151M
VTG VISTA MS FREEDOM 0151K

HAD LANCELOT 795L
HAD PRINCESS OF ALOT 407P
HAD 140 L

CE	BW	WW	YW	M	TM	GL	CED	SC	REA	MB
105	0.4	36	66	19	37	-3.3	105	0.5	0.08	-0.08
.28	.54	.40	.14	.10		.42	.07	.08	.13	.10

EPDs for January 2010 **Homo Polled** **Red**

Astro is what the beef business is all about... meat, middle and total pounds. His individual birth to growth spread is phenomenal... 88 pound birth with to 808 pound 205 day weight. Astro's first calf dam traces to the famed Sugar cow family that helped mold this great breed. The total package... flawless phenotype, beef, butt and guts.

JDPD Astro 407S



AMGV 977933
Born: 3/2/2006 Semen: \$25

Red PB

Quality Grade		QG GPD
0	0	
Tenderness		T GPD
0	0	2
Feed Efficiency		FE GPD
		-0.8

PGRS SHINING SPIRIT
HAD SLEEP TIGHT ET
WRGA PRINCESS OF POWER

SLC FREEDOM 178F ET
VTG VISTA MS FREEDOM 0151K
VTG VISTA HORIZON 7201G

CE	BW	WW	YW	M	TM	GL	CED	SC	REA	MB
108	0.6	33	57	15	32	-3.3	108	0.6	0.07	-0.07
.41	.76	.62	.47	.25		.59	.19	.29	.34	.26

EPDs for January 2010 **Homo Polled Red**

2005 Reserve National Champion. 2004 Louisville Reserve Grand Bull. This deep-sided long hiped, muscular Shining Spirit grandson should really compliment Freedom daughters. Grand bull and the Houston Stock Show, Colorado and Oklahoma State Fair.

JDPD Rolex 151M

AMGV 805051
Born: 6/20/2002 Semen:\$ 25

Red 88%

Quality Grade		QG GPD
Tenderness		T GPD
Feed Efficiency		FE GPD

HAD SLEEP TIGHT ET
JDPD ROLEX 151M
VTG VISTA MS FREEDOM 0151K

TLR COCOA 35C
POPE 164L
TAU MS TRIUMPH 604F

CE	BW	WW	YW	M	TM	GL	CED	SC	REA	MB
104	1.7	43	78	18	40	-1.9	106	0.6	0.07	-0.01
.01	.31	.22	.15	.11		.01	.01			

EPDs for January 2010 **Double Polled 7/8 Red Gelb**

Beef packing machine loaded with Beef, Butt & Guts. 2008 Houston Stock Show Champion Bull. Lead bull in the 2008 Reserve National Champion Pen of 5 Bulls in Denver. Rock solid genetics that'll help keep the Gelbvieh breed the #1 Continental Breed of Choice.

JDPD Tag Hauer 164S

AMGV 1012688
Born: 10/21/2006 Semen:\$ 25

Red PB

Quality Grade		QG GPD
0	1	
Tenderness		T GPD
2	0	0
Feed Efficiency		FE GPD
		-0.698

FLOTO
ATM TEJAS ROLLS ROYCH 868
FDA MISS ARATA 868K

LAR MR SENSATION 506S
JEB MS. SENSATION 31X
IHF MISS HAMBURG 4U

CE	BW	WW	YW	M	TM	GL	CED	SC	REA	MB
107	0.4	34	65	27	44	-2.7	109	0.6	0.13	-0.31
.87	.95	.93	.86	.86		.93	.80	.85	.92	.91

EPDs for January 2010 **Homo Polled Red**

Leading sire for maternal strength and that all-important daughters stayability trait. One of the most widely used sires in the breed with over 2,300 progeny recorded at the American Gelbvieh Association.

JEB Polled Gizmo 17Z

AMGV 264903
Born: 2/9/1990 Semen:\$ 20

Red PB

Quality Grade		QG GPD
0	0	
Tenderness		T GPD
1	0	0
Feed Efficiency		FE GPD
		-0.349

FHG FLYING H EXTRA 150D
JRI EXTRA EXPOSURE 285L71 ET
JRI MS POLLED SWEETIE 285C6

JBOB CAROLINA CPR
JRI MS LIFESAVER 270K73
JRI MS PLD JONI 270D63 ET

CE	BW	WW	YW	M	TM	GL	CED	SC	REA	MB
98	4.2	49	86	18	43	-1.5	100	1.3	0.2	-0.04
.50	.78	.66	.45	.21		.72	.19	.42	.30	.22

EPDs for January 2010 **Homo Polled Diluter Free**

Diluter-free red genetics...totally unrelated to Freedom and all red sire lines. Crowd favorite Senior Champion Bull in the 2006 National Gelbvieh Show.

Impressive stats: 82# modest birth, 742# WW/105 ratio, 1258# YW/106 ratio, 184 cm. yearling pelvic, 39.1 cm yearling scrotal, 4.83# ADG, 0.08 yearling backfat and 14.1" ribeye.

This Judd Ranch 270 cow family is one of the shortest gestation/superb growth cow families in the breed.

JRI Fully Exposed 270N83

AMGV 883933
Born: 8/21/2003 Semen:\$ 25

Red PB

Quality Grade		QG GPD
0	1	1
Tenderness		T GPD
2	0	0
Feed Efficiency		FE GPD
2	2	2

VAA LEACHMAN NEW DAY 205B
SLC FREEDOM 178F ET
BB MISS 61Y

JRI PLD GRAND PRIX ET
JRI MS PLD GRAND PRIX 125G3
JRI MS PLD SUMMIT 125D3

CE	BW	WW	YW	M	TM	GL	CED	SC	REA	MB
109	0.1	39	82	17	37	-2.8	106	0.7	0.06	-0.24
.60	.85	.78	.61	.36		.81	.33	.56	.43	.36

EPDs for January 2010 **Homo Polled Red**

Full brother to breed's no 1 selling calving ease AI sire JRI Pld Free Agent 125J3. Heavy Equipment is homozygous polled by DNA testing and his full brother Free Agent is proven homozygous polled and diluter free.

JRI Heavy Equipment 125M3

AMGV 805882
Born: 2/1/2002 Semen:\$ 25

Red PB

GeneStar	Quality Grade	QG GPD
	Tenderness	T GPD
	Feed Efficiency	FE GPD

ATM TEJAS ROLLS ROYCH 868
 DBC MR POLL ROLLS ROYCE 94Z
 DBC MISS PROSPECTOR 65X

HHF POLLED SUMMIT 648U
 JRI PLD CLASSY 217B4
 JRI 217Z3

CE	BW	WW	YW	M	TM	GL	CED	SC	REA	MB
99	4.2	36	66	7	25	1.2	103	-0.1	-0.28	-0.13
.59	.88	.82	.71	.67		.84	.57	.79	.75	.72

EPDs for January 2010 **Homo Polled Red**

This homozygous polled sire stamps as much phenotype and dimension into his progeny as any bull in the breed. Daughters are deep ribbed, easy fleshing females that know how to bring home the beef.

JRI New Trend 217D5

AMGV 434820
 Born: 2/3/1994 Semen: \$10

Red PB

GeneStar	Quality Grade	QG GPD
	Tenderness	T GPD
	Feed Efficiency	FE GPD

ATM TEJAS ROLLS ROYCH 868
 JRI PLD GRAND PRIX ET
 JRI MS PLD PREFERENCE 285A5

HHF POLLED SUMMIT 648U
 JRI MS PLD SUMMIT 43C4
 JRI MS CITATION 43W3

CE	BW	WW	YW	M	TM	GL	CED	SC	REA	MB
105	2.6	46	82	24	47	0.2	100	0.3	-0.01	-0.06
.54	.87	.79	.68	.56		.83	.48	.66	.72	.69

EPDs for January 2010 **Hetero Polled Red**

A true beef and performance producer. Impeccable Dam of Distinction dam. The total package... growth, maternal and gain ability.

JRI Pd Grand Primo 43G5

AMGV 574098
 Born: 2/1/1997 Semen: \$10

Red PB

GeneStar	Quality Grade	QG GPD
	Tenderness	T GPD
	Feed Efficiency	FE GPD

FLOTO
 ATM TEJAS ROLLS ROYCH 868
 FDA MISS ARATA 868K

TAU SHAKER 20Z
 JRI MS PLD PERFORMER 197C4
 JRI 197Z3

CE	BW	WW	YW	M	TM	GL	CED	SC	REA	MB
104	1.3	50	89	20	45	-0.2	105	0.3	0.16	-0.12
.68	.90	.85	.72	.70		.86	.60	.67	.80	.78

EPDs for January 2010 **Hetero Polled Red**

This ideally balanced sire produces modest birth, superior growth while maintaining excellent maternal values. Total outcross to all the Freedom lines. Powerful Dam of Distinction cow family.

JRI Pd Resource 197E51

AMGV 486762
 Born: 2/8/1995 Semen: \$30

Red PB

GeneStar	Quality Grade	QG GPD
	Tenderness	T GPD
	Feed Efficiency	FE GPD

SLC FREEDOM 178F ET
 JRI PLD FREE AGENT 125J3
 JRI MS PLD GRAND PRIX 125G3

JRI NEW TREND 217D5
 JRI MS PD NEW DESIGN 213G4
 JRI MS EQUALIZER 213Y3

CE	BW	WW	YW	M	TM	GL	CED	SC	REA	MB
102	2.3	41	71	17	38	-0.9	105	0.3	-0.23	-0.13
.39	.71	.58	.43	.31		.66	.26	.50	.33	.25

EPDs for January 2010 **Homo Polled Red**

Spring 2005 New Sire Addition...first calf crop at Judd Ranch looks fantastic.

One power-packed Free Agent son out of one super Judd Ranch cow family. Dam, JRI Ms Pd New Design 213G4 stats: 99 BW ratio (85 lb. average); 112 WW ratio (766 lb. average/no creep); 112 YW ratio (1,348 lb. average on four sons).

JRI Peak Performer 213N5

AMGV 852295
 Born: 2/8/2003 Semen: \$10

Red PB

GeneStar	Quality Grade	QG GPD	
	0	0	
	Tenderness	T GPD	
	2	0	1
	Feed Efficiency	FE GPD	

VAA LEACHMAN NEW DAY 205B
 SLC FREEDOM 178F ET
 BB MISS 61Y

JRI PLD GRAND PRIX ET
 JRI MS PLD GRAND PRIX 125G3
 JRI MS PLD SUMMIT 125D3

CE	BW	WW	YW	M	TM	GL	CED	SC	REA	MB
113	-3.4	28	61	13	27	-4.8	106	0.8	-0.36	-0.28
.81	.94	.91	.84	.78		.92	.69	.86	.86	.85

EPDs for January 2010 **Homo Polled Diluter Free**

This homozygous polled, diluter free son of Freedom is proving to be one of the best calving ease sires in the breed. Note his superior calving ease, low birth and gestation length EPD strength in the breed's top 5% or better.

JRI PLD Free Agent 125J3

AMGV 665810
 Born: 1/28/1999 Semen: \$20

Red PB

GeneStar	Quality Grade		QG GPD
	0	1	
	Tenderness		T GPD
	2	0	0
Feed Efficiency		FE GPD	

FLOTO

ATM TEJAS ROLLS ROYCH 868
FDA MISS ARATA 868KJRI BARTLES 406W
JRI MS PLD PREFERENCE 285A5
JRI MS EQUALIZER 285Y4

CE	BW	WW	YW	M	TM	GL	CED	SC	REA	MB
100	3.4	49	87	19	44	-0.8	103	0.7	0.16	-0.13
.68	.92	.89	.79	.78		.90	.70	.82	.86	.85

EPDs for January 2010 **Hetero Polled Red**

Noted as a breed leader for substance, beef and natural fleshing ability. Sons are beef packing machines and his daughters are big time producers. Grand Prix's dam, 285A5, is one of the most dominant females ever in the breed and she's still raising babies and producing embryos at 16 years of age.

JRI Pld Grand Prix ET

AMGV 428643

Born: 1/25/1994 Semen:\$20

Red PB

GeneStar	Quality Grade		QG GPD
	Tenderness		T GPD
Feed Efficiency		FE GPD	

JRI PLD FREE AGENT 125J3
JRI TOP SECRET 253M75 ET
JRI MS PLD FRONTIER 253J60JRI EXTRA EXPOSURE 285L71 E
JRI MS RED DAWN 197R72
JRI MS SPECIAL AGENT 197M62

CE	BW	WW	YW	M	TM	GL	CED	SC	REA	MB
110	-1.5	34	65	13	30	-4.4	105	1.2	0.04	-0.18
.26	.36	.30	.25	.15		.34	.13	.31		

EPDs for January 2010 **Polled Red**

Phenominal low birth to super growth spread off a first calf heifer... 74# bw / 787# 205 day weight. Unmatched fertility plus cow family with Pop A Top;s dam, maternal grandam and 13 year-old maternal great grandam all featuring a 365 day annual calving interval. Pop a Top should prove to be a rock solid 'heifer bull'. He is sired by the low birth weight breed trait leader Top Secret and his dam 197R72 features a 77 pound birth weight average.

JRI Pop A Top 197T83

AMGV 1065129

Born: 8/12/2007 Semen:\$20

Red PB

GeneStar	Quality Grade		QG GPD
	Tenderness		T GPD
Feed Efficiency		FE GPD	

FHG FLYING H EXTRA 150D
JRI EXTRA EXPOSURE 285L71 ET
JRI MS POLLED SWEETIE 285C6JRI PLD FREE AGENT 125J3
JRI MS LEGACY 406L20
JRI MS PLD CELEB 406G10 ET

CE	BW	WW	YW	M	TM	GL	CED	SC	REA	MB
111	-0.9	41	74	16	37	-2.4	107	1.2	0.04	-0.2
.36	.58	.38	.22	.19		.50	.18	.20		

EPDs for January 2010 **Homo Polled Red**

If you're needing to add more depth of rib, natural thickness and muscle mass Prime Cut needs to be on your purchase order. His super Dam of Merit dam sports a 105 weaning weight ratio and a 720# average 205 day weight. Prime Cut's full sister JRI 406N30 weaned a 745 pound bull calf her first year.

JRI Prime Cut 406S30

AMGV 989049

Born: 2/18/2006 Semen:\$25

Red PB

GeneStar	Quality Grade		QG GPD
	Tenderness		T GPD
Feed Efficiency		FE GPD	

JRI PLD FREE AGENT 125J3
JRI TOP SECRET 253M75 ET
JRI MS PLD FRONTIER 253J60BTI EXTRA 2106K ET
JRI MS RAVEN 68R94
JRI MS GLORY BE 68N84

CE	BW	WW	YW	M	TM	GL	CED	SC	REA	MB
110	-1.5	37	75	9	28	-4	106	0.9	-0.07	-0.17
.27	.36	.30	.25	.15		.36	.13	.31		

EPDs for January 2010 **DbI Polled Red**

"CALVING EASE GENETICS-EXCEPTIONAL GROWTH-FEED EFFICIENCY" 74# BW/848# actual WW off first calf heifer. Awesome low birth to high growth spread. With Top Secret currently off the market, Top Dog could be the next "go to bull", as he is phenotypically similar. He is deep, wide, structurally correct, good moving, and moderate framed (5.9 frame score). This Top Secret son had a 5.64# ADG with a plus 3 marbling score. With current high feed prices, and a need for better performing, easier fleshing cattle, Top Dog is a must for the commercial cattleman.

JRI Top Dog 68T14

AMGV 1065117

Born: 8/17/2007 Semen:\$20

Red PB

GeneStar	Quality Grade		QG GPD
	Tenderness		T GPD
Feed Efficiency		FE GPD	

KCF MAINSTREAM
KCF BENNETT TARGET A10
KCF MISS P2356 T40KCF BENNETT HORIZON
KCF MISS HORIZON A115
KCF MISS SELECT Y41

CE	BW	WW	YW	M	TM	GL	CED	SC	REA	MB
103	1.6	35	71	30	48	-0.6	106	0.9	0.07	-0.1
.57	.84	.78	.61	.55		.77	.45	.60	.67	.64

EPDs for January 2010 **Homo Polled Red**

C109 offers you power, balance and eye appeal along with breed leading maternal strength. Homozygous polled genetics from a rock solid cow family.

KCF Bennett C109

AMGV 378643

Born: 4/1/1993 Semen:\$10

Red PB			
Quality Grade		QG GPD	
0	0		
Tenderness		T GPD	
1	0	1	-0.749
Feed Efficiency		FE GPD	

BEA POLLED MIDNIGHT
TLR COCOA 35C
TLR MISS KAISER 449Y

BETZ PREMIER'S BLAQ MAGIC
BETZ MAGIC MUFFIN F64
RMJG MS MACIE 302C

CE	BW	WW	YW	M	TM	GL	CED	SC	REA	MB
106	1.2	45	79	24	47	-0.6	108	2.2	0.07	-0.01
.69	.91	.85	.73	.64		.87	.52	.69	.79	.77

EPDs for January 2010 **Homo Polled** **Diluter Free**

Outcross homozygous polled purebred red genetics. Totally non-related to Freedom. Produced '06 National Champion Female.

KIT Tabasco J26 ET



AMGV 651078
Born: 1/7/1999 Semen: \$20

Red PB			
Quality Grade		QG GPD	
1	0	0	1
Tenderness		T GPD	
2	0	1	-1.098
Feed Efficiency		FE GPD	
2	2	2	1
			-3.7396

ELK CK NIGHT TRAIN POLL 28Z
ELK FREIGHTRAIN 836D
CDG 836X


BMB COLLEGE FUND
KLBF GOLD FUND
NKP PGR MS GOLD 130S

CE	BW	WW	YW	M	TM	GL	CED	SC	REA	MB
99	3.8	56	93	11	39	-1.9	113	-0.1	0.05	0.01
.43	.85	.79	.70	.60		.70	.46	.48	.80	.77

EPDs for January 2010 **Homo Polled** **Diluter Free**

Still dominates all our performance categories
Produces exceptional replacement females
A red bull to use as a "Freedom Alternative"
Hank is deep bodied, deep quartered, high volume, easy traveling bull with performance numbers
Hank calves are very attractive, upheaded, gentle, and very marketable. His daughters have met with great acceptance.
Diluter free

KLBF King Of The Hill 16H 'Hank'



AMGV 651744
Born: 11/18/1998 Semen: \$20

Red PB			
Quality Grade		QG GPD	
Tenderness		T GPD	
Feed Efficiency		FE GPD	

GATZ HEAVYDUTY PERFORMAN
MHOG MR. HEAVY BLACK
WAC MS BLACKJACK 061G

TJB SLEEPY 161F ET
RED SASSY 152
RED ISABEL 7017

CE	BW	WW	YW	M	TM	GL	CED	SC	REA	MB
101	2.8	38	72	21	40	-1.4	101	0.1	0.01	-0.02
.01	.01	.01	.01	.01		.01	.01		.19	.16

EPDs for January 2010 **Homo Polled** **Red**

Red Howard 674

Photo
not
Available

AMGV 997498
Born: 2/12/2006 Semen: \$18

Red PB			
Quality Grade		QG GPD	
0	0		
Tenderness		T GPD	
1	0	2	-1.149
Feed Efficiency		FE GPD	

KCF BENNETT IDEAL G182
KCF BENNETT J25
KCF MISS VALUE E86


TOP RED JET E1 ET
TOP MIS RED JET E270H7
TOP MISS EZE E270

CE	BW	WW	YW	M	TM	GL	CED	SC	REA	MB
111	-0.4	41	89	31	52	-1.7	109	0.1	0.02	-0.04
.55	.82	.73	.56	.36		.77	.27	.46	.35	.27

EPDs for January 2010 **Hetero Polled** **Red**

Spring 2005 New Sire Addition - total outcross for Freedom daughters. Syndicated two years ago as one of the top selling bulls in the breed. Independence is producing low birth weights, quick weight gain and sound/easy fleshing progeny. Excellent combo of flawless phenotype and excellent EPD strength.

RHRT Independence L19



AMGV 766448
Born: 3/5/2001 Semen: \$30

Red PB			
Quality Grade		QG GPD	
0	1		
Tenderness		T GPD	
2	1	2	-1.847
Feed Efficiency		FE GPD	

SLC FREEDOM 178F ET
JCGR BAR GT FLASHBACK 410M
BDCG CLAUDIA 1144J


JCGR BAR GT LOUIE 2J
JCGR BAR GT LONI 27N ET
WRGA MS 16B

CE	BW	WW	YW	M	TM	GL	CED	SC	REA	MB
99	2.6	33	70	20	37	-1.8	100	0.6	0.1	-0.04
.57	.84	.76	.56	.21		.78	.18	.48	.26	.17

EPDs for January 2010 **Homo Polled** **Diluter Free**

The breed leader for Tenderness through GeneSTAR testing. Collateral brings the complete package, including a rarity of 5 out of 6 Tenderness genes. Nursed awesome first calf heifer that flat knows how to spread low birth to robust growth. If you are looking for that sire to add the all-important Tenderness genes without sacrificing phenotype, muscle and structure - look no further. Homozygous polled by DNA testing.

RID R Collateral 2R



AMGV 938431
Born: 2/5/2005 Semen: \$25

Red PB

GenesStar	Quality Grade			QG GPD
	0	0		
	Tenderness			T GPD
	2	0	0	-0.698
Feed Efficiency			FE GPD	

KCF BENNETT ARSENAL E123
KCF BENNETT IDEAL G182
KCF MISS VISION E43

VRT RUP LAZY TV HOTFUDGEJ
RUP RASPBERRY 137M
DMF HEARTBREAKER 1747H

CE	BW	WW	YW	M	TM	GL	CED	SC	REA	MB
102	3	42	86	25	46	-0.2	108	0.7	0.34	-0.02
.45	.74	.63	.35	.21		.66	.19	.34	.34	.26

EPDs for January 2010 **Homo Polled Diluter Free**

Total outcross to all red sire lines. Homozygous polled by DNA test. Diluter-free, top selling bull in Colorado Seedstock Plus Bull Sale at \$7,350. Diluter free red genetics with lots of volume and capacity in this growth sire.

RUP Ruppel Yukon 301P



AMGV 889624

Born: 1/11/2004 Semen:\$ 25

Red PB

GenesStar	Quality Grade			QG GPD	
	0	1	0	1	6.73
	Tenderness			T GPD	
	2	0	1	-1.098	
Feed Efficiency			FE GPD		

GLT SENSATION'S DAY 21Y
VAA LEACHMAN NEW DAY 205B
VAA 023Z

BB MR FORKAS 1S (JSE M2)
BB MISS 61Y
BB BELL ORCHID

CE	BW	WW	YW	M	TM	GL	CED	SC	REA	MB
106	-0.4	40	82	10	30	-5.9	105	0.3	0.15	-0.32
.91	.97	.95	.91	.90		.96	.85	.91	.94	.94

EPDs for January 2010 **Homo Polled Diluter Free**

Freedom is a calving ease bull that is homozygous polled, diluter free and sires cattle that grow. He continues to sire sale toppers, show winners, and you will be proud to be the owner of a bull, steer, or female that is sired by Freedom. Look at his EPDs - a leader in calving ease, birth weight, growth, gestation and daughter's calving ease. This dark red bull can be used with confidence!

SLC Freedom 178F ET



AMGV 601105

Born: 2/26/1996 Semen:\$ 25

Red PB

GenesStar	Quality Grade			QG GPD
	0	0		
	Tenderness			T GPD
	2	0	0	-0.698
Feed Efficiency			FE GPD	

SLC FREEDOM 178F ET
BTI RED ALERT 2077K
BTI LADY GRANITE 2001E ET

JEB POLLED GIZMO 17Z
TJB 59D5 JASMINE 177G ET
TJB MISS JR'S JENNY 59D ET

CE	BW	WW	YW	M	TM	GL	CED	SC	REA	MB
99	3.5	56	95	-2	26	-2.9	100	0	0.16	-0.17
.52	.85	.77	.58	.43		.76	.35	.56	.66	.63

EPDs for January 2010 **Homo Polled Red**

2005 New Sire Addition that swept the 2003 Breeder's Choice Bull Futurity and topped the 2003 National Sale at \$50,000. Jagermeister is one tremendous individual with loads of style and power. His Polled Gizmo/JR dam, Jasmine, is one of the top donor females ever owned by the breed leading TJB Gelbvieh program in Georgia.

TJB Jagermeister 229M - ET



AMGV 802499

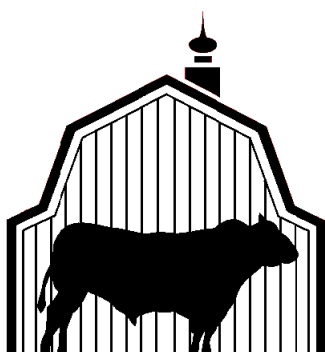
Born: 1/18/2002 Semen:\$ 20

Bull Barn Genetics

Gelbvieh Semen 2010

In the past few years, the beef industry has changed more than any other 20 year period. We too, are making changes in the merchandising of semen. We have on our website (www.bullbarn.com) the pictures of sires for you to view. You may print a copy of our catalog from of the pictured bulls on our website. Enclosed is a complete listing of Gelbvieh genetics available in today's market. The order of the bulls in this catalog is black, balancers followed by red.

If we can be of any service, let our over 40 years of semen knowledge in Gelbvieh and other breeds help lead your program down a path of success. Progeny are the true transmission of genetics, and we encourage more emphasis on looking at progeny as they become available. We have provided the EPDs and Accuracy to help in your sire selection. We have listed the higher quality Black Angus and Red Angus sires that work well for the Balancer programs.



Eldon and Kathy Starr

210 Starr Drive

Stapleton, NE 69163

Phone: 1-800-535-6173

FAX: 1-308-587-2248

Email: bull-

barn@accessdirectwb.net

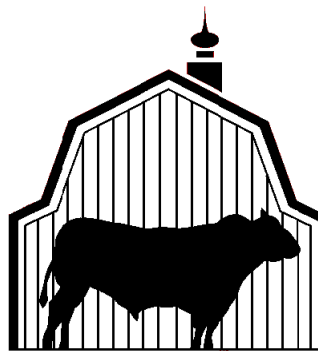
Web: www.bullbarn.com

Disclaimer of Warranty

Bull Barn Genetics and its agents or employees cannot grant the conception rate, quality or productivity to be obtained in connection with the use of its products or recommended techniques. Therefore, it makes no warranty of any kind whatsoever expressed or implied, which extends beyond description of the products herein and all warranties of merchantability and fitness for a particular purpose and hereby disclaimed. Furthermore, neither Bull Barn Genetics nor any of its or their agents or employees shall be responsible for any inquiry, damage, or loss caused to persons, animals, or property through the negligent use or handling of its or their products, or for any damage or loss due to any defects in the containers used in connection therewith.

Ordering and Shipping

- We deliver by Bull Barn truck, FedEx, UPS or US Mail
- Information needed: Name, address, phone, email address (if applicable), and the date the shipment is needed.
- You may place your order by phone, FAX, or email.
- Free shipping on orders of 100 units or more.
- Overnight (or 2-day, east or west coast) service available at extra charge



Eldon and Kathy Starr

210 Starr Drive

Stapleton, NE 69163

Phone: 1-800-535-6173

FAX: 1-308-587-2248

Email: bull-

barn@accessdirectwb.net

Web: www.bullbarn.com

Breed Association:

American Gelbvieh Association

10900 Dover Street

Westminster, CO 80021

303-465-2333

FEED EFFICIENCY INDEX

A brief explanation of Bovigen's Feed Efficiency index. This is a DNA test that identifies an animal's ability to efficiently convert feed. The markers were identified which allows producers to identify genetic lines towards more efficient feed conversions to maintain less cost in production. Studies have shown that feed efficiency has six times more effect on feedyard profitability than average daily gain. In a cow calf operation feed cost (grass and purchased feed) will normally be more than one half the cost of production. The GeneSTAR Feed Efficiency test is made up of four markers. For an example: a feed efficiency GPD of -3.0 will eat 3 pounds less feed per day than one with a 0. On a 150 day feeding period with cost of \$165.00 per ton the -3.0 GPD animal will cost \$37.00 less to feed without effecting performance or carcass quality.