

Gelbvieh Sire Catalog

April 2014



CTR Good Night 715T

Bull Barn Genetics, LLC

Eldon Starr
210 Starr Drive
Stapleton, NE

1-800-535-6173
FAX: 1-308-587-2248
BULLBARN.COM

Bull Barn Genetics

Gelbvieh 2014 Sire Catalog

In the past few years, the beef industry has changed more than any other 20 year period. We too, are making changes in the merchandising of semen. We have on our website (www.bullbarn.com) the pictures of sires for you to view. You may print a copy of our catalog from of the pictured bulls on our website. Enclosed is a complete listing of Gelbvieh genetics available in today's market. The order of the bulls in this catalog is black, balancers followed by red.

Bulls are listed by age, youngest to oldest.

If we can be of any service, let our over 40 years of semen knowledge in Gelbvieh and other breeds help lead your program down a path of success. Progeny are the true transmission of genetics, and we encourage more emphasis on looking at progeny as they become available. We have provided the EPDs and Accuracy to help in your sire selection.



Eldon and Kathy Starr
210 Starr Drive
Stapleton, NE 69163
Phone: 1-800-535-6173
FAX: 1-308-587-2248
Email: bullbarn@bullbarn.com
Web: www.bullbarn.com

Disclaimer of Warranty

Bull Barn Genetics and its agents or employees cannot grant the conception rate, quality or productivity to be obtained in connection with the use of its products or recommended techniques. Therefore, it makes no warranty of any kind whatsoever expressed or implied, which extends beyond description of the products herein and all warranties of merchantability and fitness for a particular purpose and hereby disclaimed. Furthermore, neither Bull Barn Genetics nor any of its or their agents or employees shall be responsible for any inquiry, damage, or loss caused to persons, animals, or property through the negligent use or handling of its or their products, or for any damage or loss due to any defects in the containers used in connection therewith.

Black 88%

CE BW WW YW MK TM CED ST YG CW REA MB FT CV FM
 10 0.4 80 116 33 73 10 N/A-0.26 38 0.73 0.11 0.11 40.51 42.35
 0.18 0.20 0.18 | 0.15 0.14 0.10 0.15 0.09 0.10 0.10

EPDs 12/28/2013

Homo Black Homo Polled

A flush brother to the Futurity Champion

DLW Guardian 450A ET

AMGV 1257095

Born: 2/14/2013 Semen:\$ 25

Igenity

Ten	CWT
YGr	Fat
REA	Pct
Sta	Marb

BENNETT S30
 BENNETT U271
 MISS J47 M184
 MR KINGSTON 106P
 MS MATRON 802U
 MISS RT 338 703S ET

Black PB

CE BW WW YW MK TM CED ST YG CW REA MB FT CV FM
 9 0.8 76 108 31 69 3 6 -0.18 34 0.51 -0.15 -0.15 10.21 37.94
 0.31 0.33 0.30 0.31 0.24 0.25 | 0.13 0.26 0.10 0.11 0.11

EPDs 12/28/2013

AMF-CAF-DDF

Homo Black Homo Polled

Structurally sound bull out of the popular Black Impact Sire. Pictured at only 14 months old. He is deep sided and long with natural thickness. He is as docile as any bull we have viewed and out of an outstanding Highlight 066K 8 year old cow with excellent structure and udder.

LWHF Direct Impact 568Z

AMGV 1242892

Born: 9/1/2012 Semen:\$ 25

Igenity

Ten	CWT
YGr	Fat
REA	Pct
Sta	Marb

BLACK IMPULSE 1296L
 BLACK IMPACT 3960N
 BLACK RUBY 9604J
 HIGHLIGHT 066K
 FARA ET
 MISS KARA ET

Black PB

CE BW WW YW MK TM CED ST YG CW REA MB FT CV FM
 7 1.6 71 96 39 75 4 N/A-0.19 28 0.36 -0.11 -0.11 8.58 30.40
 | | | | | | | | | | | | | |

EPDs 12/28/2013

Homo Black Homo Polled

Jackpot 74Z will be in Denver at National Western Stock Show 2014. His first calves will arrive spring of 2014. This purebred is the most exciting to come along for his confirmation muscle, depth of rib, width and an Outcross pedigree for many breeders. Homo polled and Homo Black.
 -Eldon Starr, Cedar Top Ranch

DVE Davidson Jackpot 74Z

AMGV 1248679

Born: 2/28/2012 Semen:\$ 25

Igenity

Ten	CWT
YGr	Fat
REA	Pct
Sta	Marb

FORTUNATE 681
 NAVAHO 188X
 MANDY 32S
 DAVIDSON PLD BLK JIM 6L
 DAVIDSON MS JIM 61T
 DAVIDSON MS JULIO 175P

Black PB

CE BW WW YW MK TM CED ST YG CW REA MB FT CV FM
 10 0.1 81 123 33 73 11 5 -0.33 42 1.04 0.01 0.01 34.82 48.26
 0.30 0.32 0.29 0.30 0.23 0.24 | 0.19 0.25 0.16 0.18 0.18

EPDs 12/28/2013

AMF-NHF-CAF-OSF-DDF

Homo Black Homo Polled

Purebred son of Gevenor 3N. From a birth weight of 76 pounds to a powerful yearling weight of 1399 pounds. ramrod's ultrasound for ribeye scanned a whopping 18.80 inches! Marbling was 3.62. His Epd's across the board are impressive: - Top 4% of the fgreed for YW, RE, V and FM; - Top 10% of the breed for WW, TM, CED, YG, CW and MB; - Top 25% of the breed for CE, BW and MK. He is long bodied and structurally correct. Superior docility is a plus!

Hahr Arrow H Ramrod 13z

AMGV 1212366

Born: 1/25/2012 Semen:\$ 25

Igenity

Ten	CWT
YGr	Fat
REA	Pct
Sta	Marb

VVFG FLYING H EXCLUSIVE
 EXT GOVERNOR 3N
 CHA MICHELL 74L
 MCF BRUCE ALMIGHTY 35PET
 107X
 14U ET

Black PB

CE BW WW YW MK TM CED ST YG CW REA MB FT CV FM
 14 -2.7 49 66 32 56 3 N/A-0.31 5 0.48 -0.21 -0.21 -27.12 17.42
 0.32 0.34 0.27 0.27 0.25 0.26 | 0.15 0.23 0.13 0.14 0.14

EPDs 12/28/2013

AMF-NHF-CAF-OSF-DDF

Black Homo Polled

- All great sires feature incredible cow families and note Pedro's dam.
 - Pedro's a maternal brother to JRI Journey 207S74 (deceased) who is one of the all-time great calving ease sires and a current breed trait leader for calving ease and low birth weight.
 - Great proven cow families produce all the great sires and Pedro's dam, grandam and great grandam were all previously honored Dam of Merit females.

JRI Pedro 207Z74

AMGV 1222172

Born: 1/21/2012 Semen:\$ 20

Igenity

Ten	CWT
YGr	Fat
REA	Pct
Sta	Marb

TOP SECRET 253M75 ET
 POP A TOP 197T83
 MS RED DAWN 197R72
 EXTRA EXPOSURE 285L71 ET
 MS EXPOSURE 207N64
 MS ECHO DOESIT207K511 ET

CCRO Bitterroot Rockslide

AMGV 1203052

Born: 9/21/2011 Semen:\$ 20

CE BW WW YW MK TM CED ST YG CW REA MB FT CV FM
 7 3.2 79 121 26 66 5 N/A -0.17 46 0.61 -0.06 -0.06 22.39 47.99
 0.31 0.34 0.26 0.26 0.23 0.24 0.13 0.23 0.10 0.11 0.11

EPDs 12/28/2013 AMF-NHF-CAF-OSF-DDF **Homo Black Homo Polled**

Young purebred sire. An exciting, young, purebred sire that is Homozygous Black and Homozygous Polled. His sire, Post Rock Silver 233U1 continues to gain popularity in the Gelbvieh breed and his dam is a daughter of the carcass leader Carolina Fortune. Rockslide is a very complete and well balanced bull who is heavy muscled and sound structured. He has a balanced trait EPD profile and ranks in the top 5% of the breed for non-parent cattle for Yearling Weight, and he is in the top 15% for Marbling and top 20% for Ribeye. He is in the top 2% of the breed for Carcass Value and top 4% for Feedlot Merit.

Black PB**Igenity**

Ten	CWT
YGr	Fat
REA	Pct
Sta	Marb

SARGE 635S
 POST ROCK SILVER 233U1
 POST ROCK WILMA 261P1 ET

CAROLINA FORTUNE 2564JET
 CCROSS GOLD FORTUNE 8319
 CAROLINA MS 3661L 5127R

JRI Super Duty 9Y53

AMGV 1205339

Born: 8/6/2011 Semen:\$ 25

CE BW WW YW MK TM CED ST YG CW REA MB FT CV FM
 15 -0.7 57 88 30 58 7 N/A -0.12 21 0.18 -0.23 -0.23 -9.13 31.48
 0.30 0.33 0.29 0.31 0.19 0.20 0.19 0.26 0.15 0.17 0.17

EPDs 12/28/2013 AMF-NHF-CAF-OSF-DDF **Dbl Black Homo Polled**

- Purebred calving ease genetics in one awesome fault-free package. Photographed at 19 months of age.
 - Super Duty's pedigree features stacked calving ease genetics with two of the all-time great "heifer bulls" in Secret Instinct and Journey.
 - Note Super Duty's phenomenal birth to growth spread (listed below) and he weaned off his beautiful teat/udder first calf dam at 950 pounds.
 - Fertility and longevity runs deep in this cow family as Super Duty's grandam and great grandam were both honored numerous times as Dams of Merit and Dams of Distinction.

Black PB**Igenity**

Ten	CWT
YGr	Fat
REA	Pct
Sta	Marb

TOP SECRET 253M75 ET
 SECRET INSTINCT 254U83
 MS EXTRA SUGAR 254N72 ET

JOURNEY 207S74
 MS TATOR CHIP 9W13
 MS PROCEED 9K93

DLW DLW All Business 408Y

AMGV 1180118

Born: 3/5/2011 Semen:\$ 30

CE BW WW YW MK TM CED ST YG CW REA MB FT CV FM
 8 3.2 90 131 32 77 10 4 -0.31 51 0.67 0.02 0.02 29.21 50.23
 0.46 0.61 0.46 0.44 0.27 0.28 1 0.22 0.38 0.16 0.19 0.19

EPDs 12/28/2013 AMF-NHF-CAF-OSF-DDF **Black Homo Polled**

- Performance, maternal and carcass leader with superior phenotype and added extension. - Excellent source to add Kingpin genetics from proven breed leading donor mother DLW Ms. Kingpin 408P. - Multi-trait sire with EPDs in top 20% for 11 traits. - A 7 month old daughter was the crowd favorite and sold through the Seedstock Plus Showcase Sale VIII for \$5,600.

Black 88%**Igenity**

Ten	CWT
YGr	Fat
REA	Pct
Sta	Marb

BENNETT KINGPIN K403
 MR KINGSTON 106P
 1070M

BENNETT KINGPIN K403
 MS KINGPIN 408P
 MS HERO 840H

CRAN Dream On Y054

AMGV 1189560

Born: 2/23/2011 Semen:\$ 20

CE BW WW YW MK TM CED ST YG CW REA MB FT CV FM
 11 -2.1 67 96 29 63 9 N/A 0.11 23 0.26 -0.32 -0.32 -4.68 39.15
 0.23 0.43 0.30 0.32 0.22 0.19 0.22 0.28 0.19 0.21 0.21

EPDs 12/28/2013 **Homo Black Homo Polled**

Dream On is a very moderate, smooth made purebred sire. He is showing to be a calving ease bull and the calves have eye appeal and style. Might be the outcross homozygous black, homozygous polled bull you have been looking for.

Black 88%**Igenity**

Ten	CWT
YGr	Fat
REA	Pct
Sta	Marb

TE19 ET
 MOVE'N ON W16
 MISS DREW N314

FEARLESS
 R523 ET
 BAR GT MS 432M ET

OGSG Yes Man 523Y

AMGV 1196086

Born: 2/21/2011 Semen:\$ 25

CE BW WW YW MK TM CED ST YG CW REA MB FT CV FM
 7 3.1 83 124 23 65 9 6 -0.18 47 0.62 -0.31 -0.31 -5.10 47.86
 0.29 0.34 0.33 0.34 0.23 0.23 1 0.11 0.28 0.06 0.07 0.07

EPDs 12/28/2013 **Homo Black Homo Polled**

"Yes Man" was possibly the most powerful black purebred to sell from the 2012 Overmiller Gelbvieh Sale. He is long bodied and loose in his design with a massive hip. His sire bred cows 7 years, producing functional females and bulls that grow. It's tough to find this much power in a Homozygous Black and Polled bull.

Black PB**Igenity**

Ten	CWT
YGr	Fat
REA	Pct
Sta	Marb

T G TY 313L
 NITRO 3161N
 MS KNIGHT 6102F

MASTER ONIX 247M
 543R
 LILY BLACK

Black PB**Igenity**

Ten	CWT
YGr	Fat
REA	Pct
Sta	Marb

ELK DEE JAKE 744J
CK CRAZY HORSE 138P
CK KERRY 138L

DANELL MONTANA INFUSION
TD MYA 210T
DANELL LITTLE KATI 2L

CE BW WW YW MK TM CED ST YG CW REA MB FT CV FM
12 1.4 73 104 28 65 5 5 -0.15 33 0.37 -0.08 -0.08 15.1035.94
0.41 0.50 0.32 0.31 0.25 0.26 I 0.14 0.28 0.11 0.12 0.12

EPDs 12/28/2013 AMF-NHF-OSF-DDF **Homo Black Polled**

Excellent EPD package from calving to growth to carcass. Scanned a 13.83 REA and a 3.70 IMF. One of the best footed bulls you will find in the country and has a very wide base. Very eye-appealing with a great disposition. Perfect uddered 5 y/o dam (9/9). Semen has already been shipped to Australia and Canada.

JOB Danell TD Chico Loco 28Y

AMGV 1184875
Born: 2/20/2011 Semen:\$ 20

Black PB**Igenity**

Ten	CWT
YGr	Fat
REA	Pct
Sta	Marb

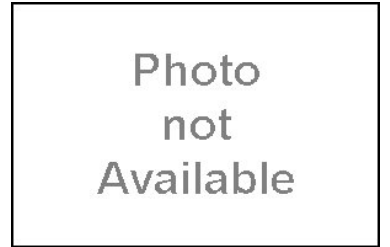
SARGE 635S
POST ROCK SILVER 233U1
POST ROCK WILMA 261P1 ET

ECHO 575E
3298K
MISS 92C

CE BW WW YW MK TM CED ST YG CW REA MB FT CV FM
8 0.7 94 144 37 85 9 N/A -0.20 55 0.85 -0.24 -0.24 0.16 59.60
0.39 0.44 0.37 0.36 0.28 0.29 0.16 0.31 0.13 0.14 0.14

EPDs 12/28/2013 **Homo Black Homo Polled**

Bodacious is a very docile bull, thick made with plenty of volume. His calves are moderate in weight. Updated picture coming in March 2014. Homo Black, Homo Polled, CA Free.

CMFS Bodacious 1297Y

AMGV 1200762
Born: 2/5/2011 Semen:\$ 25

Black 88%**Igenity**

Ten	6	CWT
YGr	6	Fat
REA	5	Pct
Sta	7	Marb

LAZY TV BEETHOVEN K278
LAZY TV BEECH JET R052ET
009K

KINGS RANSOME 901J ET
37U
SANDY 37M

CE BW WW YW MK TM CED ST YG CW REA MB FT CV FM
11 0.8 69 94 28 62 9 7 -0.33 26 0.67 -0.08 -0.08 12.5629.42
0.29 0.31 0.27 0.26 0.23 0.23 I 0.12 0.22 0.10 0.10 0.10

EPDs 12/28/2013 AMF-NHF-CAF-OSF-DDF **Homo Black Homo Polled**

- Homozygous black, homozygous polled three-quarter brother to JKGF Future Investment X037.
- Awesome birth to growth spread off a first calf heifer...78# birth weight/1350# yearling weight.
- Incredible LWHF Sandy 37M cow family.
- Low birth, super growth genetics with excellent carcass merit.

DLGO MC Ransome 103X

AMGV 1178797
Born: 9/25/2010 Semen:\$ 25

Black PB**Igenity**

Ten	CWT
YGr	Fat
REA	Pct
Sta	Marb

PLD FREE AGENT 125J3
TOP SECRET 253M75 ET
MS PLD FRONTIER 253J60

FLYING H EXTRA 150D
MS EXTRA SUGAR 254N72 ET
MS PLD GRANDIMPACT254J62

CE BW WW YW MK TM CED ST YG CW REA MB FT CV FM
11 1.3 58 80 24 53 5 6 -0.13 19 0.16 -0.18 -0.18 -8.1524.08
0.43 0.55 0.39 0.39 0.26 0.28 I 0.17 0.34 0.14 0.14 0.14

EPDs 12/28/2013 AMF-NHF-CAF-OSF-DDF **Black Homo Polled**

- Introducing a full brother to JRI Secret Instinct 254U83 whose first 43 sons averaged \$6,266 in the 2013 Judd Ranch bull sale (no semen available on Secret Instinct).
- The Secret Instinct daughters feature teat/udder excellence with a surplus of milk.
- Top Gun and Secret Instinct's dam has already been honored five times as a Dam of Merit female and this cow family is loaded with Dam of Merit/Dam of Distinction genetics.
- Top Gun's first calf crop looks phenomenal.

JRI Top Gun 254X822

AMGV 1179060
Born: 8/13/2010 Semen:\$ 25

Black PB**Igenity**

Ten	CWT
YGr	Fat
REA	Pct
Sta	Marb

HILLE K23 KODIAK
HILLE M118 MAJESTY
HILLE J01 JERI

GOLDEN BUCKLE GELV 030P
HILLE U279 UNDERCURRENT
HILLE S137 SSEA MAID

CE BW WW YW MK TM CED ST YG CW REA MB FT CV FM
14 -1.3 81 128 42 83 14 4 -0.08 44 0.32 -0.23 -0.23 2.72 53.12
0.47 0.58 0.50 0.47 0.26 0.27 I 0.13 0.39 0.07 0.08 0.08

EPDs 12/28/2013 **Hetero Black Homo Polled**

DCH DCH Hille X102

AMGV 1161528
Born: 2/14/2010 Semen:\$ 25

DLW Wardon 24W of 408

AMGV 1118810

Born: 3/1/2009 Semen:\$ 25

CE BW WW YW MK TM CED ST YG CW REA MB FT CV FM
 12 0.9 74 99 36 72 3 6 -0.37 29 0.79 -0.33 -0.33 -8.08 31.46
 0.55 0.74 0.65 0.62 0.34 0.34 1 0.26 0.49 0.19 0.23 0.23

EPDs 12/28/2013

Homo Black Double Polled

Here is a Black Impact son that is breeding more power, more shape and added extension. We are seeing a lot of performance and muscle shape in his calves at this point. Don't overlook the cow family behind him, DLW 408P is simply the best Bennett Kingpin at Warner Beef after several hundred calves born at the ranch. She has earned her way to the donor pen and her first ET calves remind us why. This may be the Homozygous Black Purebred Bull we all are searching for!!!

Black PB**Igenity**

Ten	CWT
YGr	Fat
REA	Pct
Sta	Marb

BLACK IMPULSE 1296L
 BLACK IMPACT 3960N
 BLACK RUBY 9604J

BENNETT KINGPIN K403
 MS KINGPIN 408P
 MS HERO 840H

GLAG Adkins Jackpot 906W

AMGV 1111524

Born: 2/23/2009 Semen:\$ 25

CE BW WW YW MK TM CED ST YG CW REA MB FT CV FM
 8 0.7 68 111 48 82 3 8 -0.26 37 0.82 0.56 0.56 87.89 45.46
 0.47 0.61 0.54 0.53 0.29 0.30 1 0.27 0.43 0.23 0.26 0.26

EPDs 12/28/2013

AMF-NHF-CAF-OSF-DDF **Homo Black Polled**

* #1 Purebred sire for Marbling and Carcass Value EPDs.
 * Top 1% for MK, TM, RE, MB and CV, Top 10% for ST and FM, Top 15% for YW, Top 20% for CW EPDs.
 * Scan data on Jackpot's 2011 & 2012 sons averaged a 123.2 IMF ratio and 104.5 REA ratio.
 * Jackpot's Dam of Merit dam Adkins Miss Dixie 672S has a 109 WW ratio and a 109 YW ratio and her calves.
 * Jackpot has a 102 WW ratio and a 103 YW ratio on his calves.

Black PB**Igenity**

Ten	3	CWT	
YGr	6	Fat	
REA	4	Pct	7
Sta	6	Marb	7

CAROLINA CPR
 CAROLINA FORTUNE 2564JET
 MISS 92C

EXT GOVERNOR 3N
 ADKINS MISS DIXIE
 IDEAL SARA 72P

PLA Cisco 1W

AMGV 1112447

Born: 2/22/2009 Semen:\$ 20

CE BW WW YW MK TM CED ST YG CW REA MB FT CV FM
 6 4.3 82 109 18 59 6 4 -0.28 40 0.73 -0.56 -0.56 -29.60 35.13
 0.46 0.58 0.50 0.50 0.31 0.32 1 0.25 0.41 0.20 0.23 0.23

EPDs 12/28/2013

Homo Black Homo Polled

Very structurally correct. He covers his tracks every time. He has a huge top and hind quarter with a very tight sheath. He is big boned and big footed. Plateau Gelbvieh, Peetz, Co.

Black PB**Igenity**

Ten	CWT
YGr	Fat
REA	Pct
Sta	Marb

EXTRA 2106K ET
 PABLO R014 ET
 FARAH ET

ECHO 575E
 RIGHTEOUS 009K
 Z200

DLW Windsor 36W ET

AMGV 1115946

Born: 2/12/2009 Semen:\$ 20

CE BW WW YW MK TM CED ST YG CW REA MB FT CV FM
 8 2.4 71 105 29 65 3 5 -0.03 35 0.38 0.15 0.15 39.43 37.42
 0.43 0.53 0.42 0.41 0.29 0.30 1 0.22 0.35 0.18 0.21 0.21

EPDs 12/28/2013

AMF-NHF-CAF-OSF-DDF **Black Homo Polled**

-2011 Calves are on the ground-Moderate Birth Weights-Uniform Calves

Black PB**Igenity**

Ten	1	CWT	
YGr	4	Fat	5
REA	4	Pct	5
Sta		Marb	5

BLACK IMPULSE 1296L
 BLACK IMPACT 3960N
 BLACK RUBY 9604J

VVFG FLYING H EXCLUSIVE
 FLYING H 217B/EC203N ET
 WOODLAND BELLE 217B

KHR 08W

AMGV 1114020

Born: 2/12/2009 Semen:\$ 20

CE BW WW YW MK TM CED ST YG CW REA MB FT CV FM
 8 -0.3 77 106 33 72 17 5 -0.31 31 0.65 -0.13 -0.13 11.79 35.51
 0.63 0.76 0.69 0.68 0.45 0.46 1 0.28 0.52 0.22 0.26 0.26

EPDs 12/28/2013

AMF-NHF-CAF-OSF-DDF **Black Polled**

- KHR 08W's pedigree is stacked with calving ease/beef maker genetics and he is definitely passing it on.
 - The 08W progeny feature superb calving ease in that 80 pound range and they come well equipped in the depth of rib department as well.
 - Calving ease/beef plus genetics and note KHR 08W is among the breed's Tenderness leaders with +9 Tenderness.

Black PB**Igenity**

Ten	9	CWT	
YGr	6	Fat	
REA	4	Pct	5
Sta	8	Marb	5

03N
 31T
 429P

EXT GOVERNOR 3N
 708T
 512R

Black PB

CE BW WW YW MK TM CED ST YG CW REA MB FT CV FM
 1 4.7 98 138 20 69 2 4 -0.24 58 0.87 -0.42 -0.42 -24.3252.43
 0.66 0.76 0.70 0.70 0.53 0.55 1 0.32 0.53 0.29 0.32 0.32

Igenity

Ten	3	CWT	6
YGr	7	Fat	5
REA	5	Pct	5
Sta		Marb	5

NORTHERN EXPOSURE J171
 NORTHERN WIND P068 ET
 OLIVIA J811 ET

BENNETT LANDMARK J377
 TYRA R044 ET
 FARAH ET

EPDs 12/28/2013 AMF-NHF-CAF-OSF-DDF **Homo Black Homo Polled**
 - The #1 RFI bull in Eagle Pass Ranch's 2009 feed efficiency testing program.
 - Northern Pacific is siring heavy muscled, fast growing, extremely thick calves that have a ton of rib shape.
 - Excellent combo of phenotype, functionality and breed leading RFI genetics.

EGL Northern Pacific W026 ET

AMGV 1123691
 Born: 2/7/2009 Semen: \$ 35

Black PB

CE BW WW YW MK TM CED ST YG CW REA MB FT CV FM
 13 -1.0 60 89 24 54 7 6 -0.16 21 0.19 -0.17 -0.17 -3.93 30.74
 0.46 0.56 0.43 0.42 0.30 0.31 1 0.17 0.36 0.15 0.15 0.15

Igenity

Ten	3	CWT	6
YGr	5	Fat	6
REA	5	Pct	6
Sta	5	Marb	6

PLD FREE AGENT 125J3
 TOP SECRET 253M75 ET
 MS PLD FRONTIER 253J60

FLYING H EXTRA 150D
 MS PD BLACKSTAR 270K75ET
 MS PD BLK GEM 270E62 ET

EPDs 12/28/2013 AMF-NHF-CAF-OSF-DDF **Black Homo Polled**
 From genotype to phenotype this powerhouse Top Secret son is unparalleled. This flawless powerhouse possesses unbelievable natural rib, volume and pure beef in a really attractive fault-free package and note his tremendous testicular development that made this breed great. Secret Agent's ten-year-old Dam of Merit dam's eight natural born calves have only averaged 82 pounds at birth with a whopping 731 pound 205 day weight average with no creep.

JRI Secret Agent 270W751 ET

AMGV 1120218
 Born: 1/22/2009 Semen: \$ 20

Black PB

CE BW WW YW MK TM CED ST YG CW REA MB FT CV FM
 9 0.2 62 81 28 60 8 3 -0.21 18 0.38 -0.29 -0.29 -17.9922.64
 0.47 0.63 0.41 0.40 0.26 0.27 1 0.19 0.35 0.13 0.15 0.15

Igenity

Ten	3	CWT	6
YGr	6	Fat	6
REA	6	Pct	6
Sta		Marb	6

PEGASUS 01P
 PREMONITION 662S ET
 SALLEY ET

HOLLYWOOD
 140 L
 BAR GT MS WYOMING 8D

EPDs 12/28/2013 AMF-NHF-CAF-OSF-DDF **Black Polled**
 - First semen release on this power house 2010 National Champion Bull.
 - His beautiful daughter sold as one of the top sellers in the 2012 National Sale and this beauty reigned as the 2012 Reserve National Champion Heifer Calf.
 - Akin is a real beef bull with tremendous capacity/muscle mass and he's stamping his progeny with that same softness/muscle structure.
 - Consistency is a key moneymaker in superior genetics and Akin looks to be Mr. Consistency.

JDPD Akin 140W

AMGV 1109909
 Born: 1/10/2009 Semen: \$ 25

Black PB

CE BW WW YW MK TM CED ST YG CW REA MB FT CV FM
 10 0.7 64 92 35 67 8 4 -0.28 25 0.57 0.01 0.01 19.5630.33
 0.48 0.65 0.51 0.46 0.28 0.29 1 0.19 0.40 0.15 0.11 0.11

Igenity

Ten	7	CWT	4
YGr	5	Fat	5
REA	5	Pct	5
Sta		Marb	5

BAR GT FLASHBACK 410M ET
 R COLLATERAL 2R
 BAR GT LONI 27N ET

COCOA 35C
 DC WILMA 10N2 ET
 3R PLD WILMA 215A

EPDs 12/28/2013 AMF-NHF-CAF-OSF-DDF **Black Homo Polled**
 2010 Reserve National Champion Senior Bull Calf Chief Executive combines exceptional length and power in a super sound package. Chief Executive's dam, Wilma 10N2, is a powerful 2009 Dam of Merit female that features a 99 BW ratio with a performance plus 112 WW ratio. Maternal excellence runs deep in the cow family as grandam, Wilma 215A, features an impressive 123 WW ratio. Widespread birth to growth individual loaded with exceptional maternal strength/carcass plus genetics.

BDCG PMFG Chief Executive10U1

AMGV 1099105
 Born: 10/20/2008 Semen: \$ 20

Black PB

CE BW WW YW MK TM CED ST YG CW REA MB FT CV FM
 19 -1.6 74 100 41 79 4 2 -0.37 26 0.85 -0.14 -0.14 8.80 32.10
 0.77 0.85 0.81 0.78 0.65 0.66 1 0.30 0.57 0.23 0.27 0.27

Igenity

Ten	4	CWT	6
YGr	6	Fat	7
REA	4	Pct	7
Sta		Marb	7

03N
 SAM SPADE 02S
 413P

FULLBACK 011G
 LAZY TV MS FULLBACK L643
 LAZY TV E271

EPDs 12/28/2013 AMF-NHF-CAF-OSF-DDF **Homo Black Hetero Polled**
 Lazy TV Sam topped the 2009 Thorstenson Gelbvieh Sale. His first daughters will calve spring of 2012. Initial calf crops show deep, soggy build with plenty of thickness and muscle. Calves have a good disposition with sound feet and leg structure.

VRT Lazy TV Sam U451

AMGV 1079233
 Born: 5/2/2008 Semen: \$ 20

DVE Davidson Powerhouse 13U

CE BW WW YW MK TM CED ST YG CW REA MB FT CV FM

1 3.3 72 99 39 75 5 7 0.08 33 0.43 -0.33 -0.33 -9.68 32.19

0.72 0.77 0.74 0.73 0.64 0.65 0.00 0.30 0.54 0.24 0.28 0.28

EPDs 12/28/2013 AMF-NHF-CAF-OSF-DDF **Homo Black Homo Polled**

- Powerhouse swept the Bull Calf Championship at the 2008 Canadian National Gelbvieh Show (Powerhouse photographed at his dams side).
- Powerful Canadian bred cow family featuring teat/udder excellence.
- Out cross Canadian genetics and his calves are Powerhouse's as well.



AMGV 1116049

Born: 1/30/2008 Semen:\$ 20

Black PB**Igenity**

Ten	4	CWT	5
YGr	7	Fat	
REA	5	Pct	6
Sta		Marb	6

EXTRA 2106K ET
SECRET WEAPON 6S
PLD BLACK JASSY 57PDAVIDSON PLD BLK JIM 6L
DAVIDSON MS JIM 13P
DAVIDSON MS MONTANA 41L**TAU Gunslinger 19U**

CE BW WW YW MK TM CED ST YG CW REA MB FT CV FM

10 3.8 65 86 28 61 10 6 -0.67 26 1.46 -0.30 -0.30 -1.47 25.15

0.71 0.80 0.76 0.74 0.60 0.60 1 0.42 0.55 0.46 0.50 0.50

EPDs 12/28/2013 AMF-NHF-CAF-OSF-DDF **Black Homo Polled**

- *Gunslinger is one of the many new exciting sire additions at Cattlemen's Connection. *Gunslinger sons have consistently topped the Swanson Cattle Co. Bull Sales and you talk about performance plus/beef machines. *This will be the first offering of Gunslinger Semen on the open market. It will be priced at \$30 for purchases of 20 or more units. \$50 for purchases of 20 or less units. *The early scan data on Gunslinger sons for yearling ribeye and marbling looks mighty impressive.



AMGV 1086849

Born: 1/29/2008 Semen:\$ 50/

Black PB**Igenity**

Ten	5	CWT	
YGr	6	Fat	5
REA	4	Pct	5
Sta		Marb	5

BAR GT LOUIE 2J
HONOR ROLL S232
K067RUPPLE GUNNISON N31
GUNNISON 5151R
MISS BENNETS BONUS 230M**MCFG The Man 113U**

CE BW WW YW MK TM CED ST YG CW REA MB FT CV FM

11 0.2 88 134 30 74 13 6 -0.16 49 0.57 -0.06 -0.06 21.44 54.63

0.66 0.73 0.66 0.66 0.54 0.55 1 0.30 0.51 0.24 0.28 0.28

EPDs 12/28/2013 **Black Polled**

- Here are the percentile rankings for 113u Top 2% for CED. Top 4% for YW. Top 10% for CE, BR, WW AND CW. Top 15% for MB. Top 20% for TM and RE. Top 45% for M. Top 50% for ST top 75% for YG and Top 80% for FT I would suggest not to use him on larger framed cows, he has worked real well on smaller Angus type females. We have a pb female out of 113u and a Carolina Fortune daughter that is headed for the donor pen. Her EPD's are equally as good and she is a very moderate 2 yr old heifer. She just had a Angus 10X bull calf. He already looks awesome at 20 days of age. -Ken Flikkema



AMGV 1089222

Born: 1/18/2008 Semen:\$ 25

Black 88%**Igenity**

Ten		CWT	
YGr		Fat	
REA		Pct	
Sta		Marb	

LAZY TV BEETHOVEN K278
MCF BRUCE ALMIGHTY 35PET
41K ETRED TANK 61F ET
TANELE 927
ISABEL 689F**WOAK Revolution 08T**

CE BW WW YW MK TM CED ST YG CW REA MB FT CV FM

9 1.7 73 98 36 73 7 2 -0.15 29 0.30 0.01 0.01 20.22 30.51

0.60 0.73 0.65 0.64 0.45 0.45 1 0.32 0.50 0.30 0.34 0.34

EPDs 12/28/2013 NHF-CAF-OSF-DDF **Black Homo Polled**

- *This moderate framed beef package offers you an excellent blend of calving ease, growth, maternal strength and added carcass merit.
- *Revolution is wide based with excellent feet and leg structure.
- *Revolution's sire Bennett Kingpin was one of our most popular sires before his untimely death (no semen inventory remains on Bennett Kingpin).



AMGV 1056207

Born: 10/15/2007 Semen:\$ 30

Black PB**Igenity**

Ten	1	CWT	
YGr	6	Fat	5
REA	6	Pct	6
Sta		Marb	6

BENNETT IDEAL G182
BENNETT KINGPIN K403
MISS BONUS H321TABASCO J26 ET
TAMARA N006
MSPLD PRECIOUS125C336ET**CCRO C-Cross Black Jack 7234T**

CE BW WW YW MK TM CED ST YG CW REA MB FT CV FM

13 -0.3 83 113 21 63 8 5 -0.36 35 0.74 -0.04 -0.04 23.36 37.84

0.48 0.65 0.54 0.50 0.24 0.24 1 0.23 0.42 0.16 0.16 0.16

EPDs 12/28/2013 CAF **Homo Black Homo Polled**

- *Rarely do you find this type of muscle mass and volume in a linebred calving ease package. *Black Jack's pedigree features many of the breeds all-time great calving ease sires such as Atlas, Extra 150D, Encore and Premier. *Calving ease genetics coupled with superior growth and carcass merit.



AMGV 1066169

Born: 9/26/2007 Semen:\$ 20

Black 75%**Igenity**

Ten	4	CWT	
YGr	6	Fat	6
REA	5	Pct	7
Sta		Marb	7

CAROLINA MASTER 4231M ET
FLYINGH JBOB MASTER PLAN
4520M ETCAROLINA HERO 4659M ET
CAROLINA MS HERO 5122R
J BOB 4613M

Black PB

CE BW WW YW MK TM CED ST YG CW REA MB FT CV FM
 4 2.1 66 81 32 65 10 9 -0.12 20 0.16 -0.02 -0.02 6.44 20.43
 0.77 0.80 0.78 0.78 0.71 0.72 0.23 0.29 0.56 0.22 0.26 0.26

ALS Maverick 70T

AMGV 1052246
 Born: 9/3/2007 Semen:\$ 25

Igenity

Ten	3	CWT	1
YGr	6	Fat	
REA	4	Pct	8
Sta		Marb	8

EPDs 12/28/2013 CAF Hetero Black Homo Polled

Top selling bull in the 2008 Bluegrass Gelbvieh Invitational Sale. Maverick nursed a super, moderate framed, deep ribbed, highly productive 6- year-old dam. The first carcass plus CTR Highlight 066K son on the market with a very limited semen supply on 066K. Highlight 066K daughters really milk and with the combo of Maverick's performance plus dam, expect the Maverick daughters to be maternal plus.

RJ HIGHLIGHT 732H
 HIGHLIGHT 066K
 442D

FREEDOMS REFLECTION
 MS EBONY REFLECTION
 MS S&S PLD GIZMO

Black PB

CE BW WW YW MK TM CED ST YG CW REA MB FT CV FM
 13 -1.3 89 137 34 79 9 7 -0.16 49 0.57 -0.10 -0.10 17.6057.13
 0.64 0.68 0.64 0.64 0.57 0.57 1 0.21 0.49 0.15 0.17 0.17

RWG Traction 7412

AMGV 1218825
 Born: 4/27/2007 Semen:\$ 40

Igenity

Ten		CWT	
YGr		Fat	
REA		Pct	
Sta		Marb	

EPDs 12/28/2013 AMF-NHF-CAF-OSF-DDF Black Homo Polled

"Traction represents Cedar Top Ranch's commitment to fresh Gelbvieh genetics. After over 2,000 miles through Canada, this was THE Gelbvieh bull I found that best combined natural thickness, great structure, and fleshing ability in a moderate package."
 -Eldon Starr

EXTRA EXPOSURE 285L71 ET
 ROYAL RESERVE 5066
 DAVIDSON MS PLD BLK 107L

GARTH J040 ET
 NINE LIFE KITTY 21N
 TWIN STAR KITTY 710K

Black PB

CE BW WW YW MK TM CED ST YG CW REA MB FT CV FM
 13 1.2 68 97 25 59 -3 10 -0.13 29 0.22 -0.16 -0.16 3.34 32.95
 0.61 0.68 0.63 0.61 0.53 0.52 1 0.19 0.48 0.14 0.14 0.14

JRI Secret Weapon 164T5

AMGV 1032767
 Born: 2/6/2007 Semen:\$ 20

Igenity

Ten	1	CWT	2
YGr	5	Fat	
REA	7	Pct	5
Sta		Marb	6

EPDs 12/28/2013 AMF-NHF-CAF-OSF-DDF Black Homo Polled

Outcross black genetics featuring wide spread birth to growth in one complete package from one powerful cow family. Secret Weapon's super seven year old dam sports a calving ease 81 pound average birth weight on her seven calves while spreading growth at 708 pounds on 205 day weight. Grandam JRI Ms Equalizer 164Y3 was honored numerous times as Dam of Merit and Dam on Distinction female. Excellent marbling score - plus 4... with 5 being the maximum score. Well endowed with a 42.1 centimeter yearling scrotal circumference.

PLD FREE AGENT 125J3
 TOP SECRET 253M75 ET
 MS PLD FRONTIER 253J60

FLYING H EXTRA 150D
 MS PLD ANGEL 164K4
 MS EQUALIZER 164Y3

Black PB

CE BW WW YW MK TM CED ST YG CW REA MB FT CV FM
 15 -0.3 47 71 33 56 7 7 -0.23 12 0.37 -0.35 -0.35 -29.2722.35
 0.84 0.87 0.85 0.84 0.80 0.80 0.21 0.32 0.59 0.26 0.28 0.28

JRI Top Grid 254T725

AMGV 1032813
 Born: 1/30/2007 Semen:\$ 20

Igenity

Ten	4	CWT	6
YGr	6	Fat	
REA	4	Pct	6
Sta		Marb	6

EPDs 12/28/2013 AMF-NHF-CAF-OSF-DDF Black Homo Polled

Top selling bull in Judd Ranch's 2008 bull sale. 2008 Breeder's choice Futurity Runner-up Bull. Lead bull in Judd Ranch's '08 National Champion pen of 5 bulls. #1 Ribeye bull in the '08 Judd Ranch bull sale - 16.9 sq. in. yearling ribeye. Marbling score - plus 4... with 5 being the maximum score.

PLD FREE AGENT 125J3
 TOP SECRET 253M75 ET
 MS PLD FRONTIER 253J60

EXTRA EXPOSURE 285L71 ET
 MSEXTRAIMPRESSD254P625ET
 MS PD BLACKHILLS 254E52

Black PB

CE BW WW YW MK TM CED ST YG CW REA MB FT CV FM
 9 2.7 64 88 8 40 8 5 0.01 26 -0.06 -0.25 -0.25 -10.5627.72
 0.47 0.53 0.48 0.48 0.36 0.36 1 0.18 0.39 0.16 0.16 0.16

JRI Mack 291S62

AMGV 1019625
 Born: 8/29/2006 Semen:\$ 20

Igenity

Ten	3	CWT	
YGr	6	Fat	
REA	6	Pct	5
Sta	7	Marb	5

EPDs 12/28/2013 Black Homo Polled

*This black homozygous polled purebred sire is really injecting the muscle mass and scrotal development in his sons. *His daughters are moderate framed with super teat/udder structures. *Mack was on the top gaining bulls out of 100+ gain tested and his progeny definitely possess feed efficiency.

FLYING H EXTRA 150D
 EXTRA 2106K ET
 LADY GRANITE 2001E ET

PLD FREE AGENT 125J3
 MS FREE AGENT 291N50
 MS PLD NEW LEGGACY291G40

JRI Journey 207S74

AMGV 1019556

Born: 8/10/2006 Semen:\$ 20

CE BW WW YW MK TM CED ST YG CW REA MB FT CV FM
 21 -5.0 31 29 32 48 6 9 -0.30 -21 0.11 -0.25 -0.25 -79.04 -1.36
 0.70 0.74 0.70 0.71 0.61 0.62 0.24 0.28 0.53 0.23 0.25 0.25

EPDs 12/28/2013 AMF-NHF-CAF-OSF-DDF **Black Homo Polled**

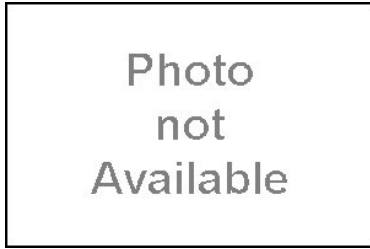
*Proven calving ease black, homozygous polled purebred.*Powerful cow family featuring a Dam of Merit dam, grandam and great grandam.*Tremendous testicular development and the Journey sons are well endowed.*"Heiferbull" genetics with that extra burst of beef, butt and guts

Black PB**Igenity**

Ten	CWT
YGr	Fat
REA	Pct
Sta	Marb

PLD FREE AGENT 125J3
 TOP SECRET 253M75 ET
 MS PLD FRONTIER 253J60

EXTRA EXPOSURE 285L71 ET
 MS EXPOSURE 207N64
 MS ECHO DOESIT207K511 ET

KCF Bennett S30

AMGV 1008656

Born: 2/16/2006 Semen:\$ 20

CE BW WW YW MK TM CED ST YG CW REA MB FT CV FM
 12 0.1 80 111 26 66 7 6 -0.30 35 0.63 0.07 0.07 33.47 38.13
 0.72 0.78 0.74 0.75 0.64 0.65 0.25 0.34 0.55 0.30 0.33 0.33

EPDs 12/28/2013 CAF **Black Polled**

S30 is proving to be a top-notch sire. Truly a multi-trait sire, he sires moderate-framed, expressively-muscled progeny.

Black PB**Igenity**

Ten	CWT
YGr	Fat
REA	Pct
Sta	Marb

BENNETT IDEAL G182
 BENNETT KINGPIN K403
 MISS BONUS H321

BENNETT LANDMARK J377
 MISS LANDMARK P238
 MISS J47 M184

JHG Premonition 662S ET

AMGV 1006993

Born: 2/6/2006 Semen:\$ 25

CE BW WW YW MK TM CED ST YG CW REA MB FT CV FM
 7 3.2 63 88 22 53 6 3 -0.14 26 0.30 -0.30 -0.30 -11.36 28.19
 0.83 0.86 0.84 0.83 0.79 0.79 0.02 0.32 0.58 0.26 0.29 0.29

EPDs 12/28/2013 AMF-NHF-CAF-OSF-DDF **Homo Black Homo Polled**

Premonition topped the Spring '07 Midwest Performance Bull Sale and he's one of the most complete young sires to come into the breed for some time. He's sired by the 2005 Breeder's Choice Futurity Bull Pegasus and his famed dam LJS Salley ET is one of the top producing donor females in the country.

Black PB**Igenity**

Ten	3	CWT	5
YGr	5	Fat	
REA	6	Pct	7
Sta		Marb	8

FREEDOM 178F ET
 PEGASUS 01P
 MISS DREW 221M

FLYING H EXTRA 150D
 SALLEY ET
 437Y

RTRT Solution

AMGV 979817

Born: 1/25/2006 Semen:\$ 20

CE BW WW YW MK TM CED ST YG CW REA MB FT CV FM
 13 0.7 68 88 4 38 3 10 -0.09 22 0.21 -0.29 -0.29 -15.11 25.15
 0.79 0.81 0.79 0.79 0.76 0.76 0.25 0.31 0.57 0.27 0.29 0.29

EPDs 12/28/2013 AMF-NHF-CAF-OSF-DDF **Homo Black Homo Polled**

2007 Breeder's Choice Futurity Champion Bull in Denver. Incredible low birth (79 BW) to growth (864 WW) spread off a super first calf heifer. Solution's first calf crop produced the 2008 Nile Champion Female and this beauty topped the Montana Gelbvieh Association's State Sale.

Black PB**Igenity**

Ten	CWT
YGr	Fat
REA	Pct
Sta	Marb

FLYING H EXTRA 150D
 EXTRA 2106K ET
 LADY GRANITE 2001E ET

TITUS 880K
 P401
 MISS POWER LINE

JKGF Trendsetter 55R ET

AMGV 981105

Born: 12/16/2005 Semen:\$ 25

CE BW WW YW MK TM CED ST YG CW REA MB FT CV FM
 10 1.0 74 96 30 67 9 3 -0.40 27 0.75 -0.38 -0.38 -14.55 29.07
 0.83 0.88 0.85 0.85 0.77 0.77 0.04 0.35 0.59 0.31 0.35 0.35

EPDs 12/28/2013 AMF-NHF-OSF-DDF **Homo Black Homo Polled**

-Trendsetter topped J&K Farms 2007 sale and now his powerhouse sons are topping J&K Farms bull sale.-Trendsetter's sire Bennett Kingpin was on of the popular AI sires before his untimely death (no semen inventory remains on Bennett Kingpin).

Black PB**Igenity**

Ten	CWT
YGr	Fat
REA	Pct
Sta	Marb

BENNETT IDEAL G182
 BENNETT KINGPIN K403
 MISS BONUS H321

ECHO 575E
 MISS KARA ET
 MISS WONDERFUL

Black PB

CE BW WW YW MK TM CED ST YG CW REA MB FT CV FM
 8 1.8 64 107 39 71 10 6 -0.30 36 0.60 -0.33 -0.33 -5.03 43.74
 0.49 0.65 0.57 0.55 0.31 0.31 1 0.17 0.45 0.11 0.12 0.12

DCSF Post Rock ID 235R1 ET

AMGV 977023

Born: 10/8/2005 Semen:\$ 20

Igenity

Ten	CWT
YGr	Fat
REA	Pct
Sta	Marb

EPDs 12/28/2013

Homo Black Homo Polled

235R1 is a homozygous polled, heterozygous black purebred that is an extremely long made and deep bodied bull. His daughters are feminine and have great udders and the sons grow well and are consistent. His dam is the great Wilma female that is also the mother of Top Brass. Tremendous set of EPDs and a unique outcross black pedigree.

NEW DIRECTION 905
 POSTROCK IDEAL DIRECTION
 POST ROCK DIAMOND44K2 ET

BENNETT PACESETTER A16
 POST ROCK WILMA 147H ET
 3R PLD WILMA 215A

Black PB

CE BW WW YW MK TM CED ST YG CW REA MB FT CV FM
 14 -0.1 77 109 30 69 15 0 -0.24 33 0.36 -0.50 -0.50 -26.5337.77
 0.81 0.84 0.82 0.82 0.77 0.77 0.20 0.32 0.58 0.27 0.31 0.31

KHR 47R

AMGV 943745

Born: 3/12/2005 Semen:\$ 20

Igenity

Ten	7	CWT	
YGr	5	Fat	
REA	4	Pct	6
Sta	7	Marb	7

EPDs 12/28/2013 AMF-NHF-CAF-OSF-DDF **Homo Black Double Polled**

- KHR 47R progeny are extremely docile, super long made with an abundance of muscle mass. They rank among the breed's best for their feet and leg structure as well.
 - Breed leading EPD strength for calving ease, growth, total maternal and that all-important carcass merit.
 - Breed trait leader for yearling weight and scrotal circumference.
 - Homozygous for 316 Tenderness gene!

ATLAS 712G
 03N
 907J
 D410
 023K
 513E

Black PB

CE BW WW YW MK TM CED ST YG CW REA MB FT CV FM
 10 2.0 70 99 14 49 9 6 -0.13 31 0.35 -0.16 -0.16 5.98 33.83
 0.88 0.89 0.88 0.88 0.86 0.86 0.32 0.39 0.60 0.39 0.42 0.42

XXB Big n' Rich 911P ET

AMGV 929387

Born: 12/24/2004 Semen:\$ 20

Igenity

Ten	CWT
YGr	Fat
REA	Pct
Sta	Marb

EPDs 12/28/2013 AMF-NHF-CAF-OSF **Black Homo Polled**

XXB Big N' Rich 911P ET earned the Reserve National Champion banner for Boehler Gelbvieh of Orleans, Neb. XXB Big N' Rich earned Reserve Champion Bull honors at Kansas City and Louisville in 2005. Big N' Rich earned 2005-06 Ring of Gold Champion Bull for earning the most points at designated Ring of Gold shows during the year. Big N' Rich was selected as 2006 Breeder's Choice Bull Futurity Champion earlier in the weekend's activities.

NEW DIRECTION 905
 TITUS 880K
 MISS ECHO J880
 MR BEAU JANGLES 308B
 G565
 D594

Black PB

CE BW WW YW MK TM CED ST YG CW REA MB FT CV FM
 9 0.6 73 110 33 70 5 9 0.00 36 0.18 -0.28 -0.28 -5.13 41.13
 0.90 0.92 0.91 0.90 0.87 0.87 0.29 0.33 0.60 0.29 0.33 0.33

DCSF Post Rock Granite 200P2

AMGV 930426

Born: 9/15/2004 Semen:\$ 25

Igenity

Ten	CWT
YGr	Fat
REA	Pct
Sta	Marb

EPDs 12/28/2013 AMF-NHF-OSF-DDF **Homo Black Homo Polled**

200P2 was the most exciting bull to sell in the 2006 sale season. He posted a 110 WW ratio, and is in the top 10% of the breed for WW, top 5% for YW, and top 30% for Calving Ease and low Birth Weight. Top genetics for growth, eye appeal with a moderate birth EPD.

EXTRA 2106K ET
 GRANITE 2135M
 ELECTRA B 2001H
 NEW DIRECTION 905
 POST ROCK TWILA 223M2
 POST ROCK TWILA 3F2

Black PB

CE BW WW YW MK TM CED ST YG CW REA MB FT CV FM
 10 3.2 83 121 26 67 8 4 -0.06 46 0.36 -0.03 -0.03 22.46 45.03
 0.85 0.87 0.85 0.85 0.82 0.82 0.37 0.33 0.59 0.29 0.33 0.33

ELK CK Crazy Horse 138P

AMGV 902554

Born: 2/28/2004 Semen:\$ 20

Igenity

Ten	CWT
YGr	Fat
REA	Pct
Sta	Marb

EPDs 12/28/2013 AMF-NHF-CAF-OSF-DDF **Homo Black Homo Polled**

Crazy Horse is an attractive patterned, level topped bull who possesses loads of muscle shape. He was Division Champion at the 2006 NWSS. Crazy Horse's maternal grand-dam is a Dam of Merit, and her dam has been a Dam of Distinction for years.

BOO BOO 155E
 ELK DEE JAKE 744J
 MS COCOA 744G
 ELK CREEK LONER 712G
 CK KERRY 138L
 CK KITTEN 826H

EGL Northern Wind P068 ET

AMGV 907439

Born: 2/15/2004 Semen:\$ 30

CE BW WW YW MK TM CED ST YG CW REA MB FT CV FM
 -1 2.2 74 90 16 53 4 7 -0.56 25 1.43 -0.35 -0.35 -8.01 23.20
 0.89 0.90 0.89 0.89 0.87 0.87 0.42 0.44 0.60 0.48 0.51 0.51

EPDs 12/28/2013 AMF-NHF-CAF-OSF-DDF **Homo Black Homo Polled**

Northern Wind is the #1 Gelbvieh proven sire for RFI.
 His sons are moderate framed, expressively muscled with yearling
 ribeye averages at fifteen plus square inches.
 The Northern Wind daughters feature definite teat/udder quality
 improvement.
 Breed leading RFI genetics coupled with exceptional carcass merit.

Black PB**Igenity**

Ten	CWT
YGr	Fat
REA	Pct
Sta	Marb

FLYING H EXTRA 150D
 NORTHERN EXPOSURE J171
 C111 ET

BUD 11G
 OLIVIA J811 ET
 OLIVE F025 ET

RTRM Headline

AMGV 890202

Born: 2/4/2004 Semen:\$ 25

CE BW WW YW MK TM CED ST YG CW REA MB FT CV FM
 11 0.7 58 83 8 37 0 5 -0.04 20 0.20 -0.32 -0.32 -19.28 26.54
 0.83 0.86 0.83 0.82 0.78 0.79 0.33 0.32 0.58 0.27 0.30 0.30

EPDs 12/28/2013 AMF-NHF-CAF-OSF-DDF **Homo Black Homo Polled**

2006 Houston Stock Show Grand Bull. Unmatched pedigree: Extra
 Exposure, 2002 National Champion Bull and Miss Kali B, 2004 Reserve
 National Champion Female. Headline offers you tremendous muscle,
 depth of rib and flawless eye appeal.

Black PB**Igenity**

Ten	CWT
YGr	Fat
REA	Pct
Sta	Marb

FLYING H EXTRA 150D
 EXTRA EXPOSURE 285L71 ET
 MS POLLED SWEETIE 285C6

EXTRA 2106K ET
 MISS KALI B 2126M
 MISS KALI 2005K

PMG Pegasus 01P

AMGV 888814

Born: 1/9/2004 Semen:\$ 25

CE BW WW YW MK TM CED ST YG CW REA MB FT CV FM
 5 3.2 57 77 19 47 7 6 -0.21 20 0.40 -0.03 -0.03 7.88 21.72
 0.82 0.84 0.82 0.82 0.79 0.79 0.44 0.34 0.58 0.30 0.33 0.33

EPDs 12/28/2013 AMF-NHF-CAF-OSF-DDF **Hetero Black Homo Polled**

2005 Breeder's Choice Futurity Champion Bull - first semen available to
 the general public after Jan. 10, 2007. Topped 2005 National Gelbvieh
 Sale at \$33,000 and his first calf crop looks very impressive.
 Performance plus 960 pound 205 day weight off a superb first calf heifer
 and has a huge yearling scrotal circumference at 43 centimeters.

Black PB**Igenity**

Ten	CWT
YGr	Fat
REA	Pct
Sta	Marb

LEACHMAN NEW DAY 205B
 FREEDOM 178F ET
 MISS 61Y

DREW 565K
 MISS DREW 221M
 MISS DATELINE 805G

DLW Natural 862N

AMGV 894575

Born: 12/10/2003 Semen:\$ 20

CE BW WW YW MK TM CED ST YG CW REA MB FT CV FM
 11 2.3 80 108 36 76 14 6 -0.53 36 1.18 -0.08 -0.08 23.87 35.43
 0.75 0.80 0.75 0.75 0.68 0.69 0.36 0.36 0.55 0.38 0.42 0.42

EPDs 12/28/2013 **Homo Black Polled**

*Outcross genetics for many of the Gelbvieh bloodlines. *The Natural
 daughters exhibit an excellent teat/udder structure. *Natural's
 performance, maternal strength and added carcass value EPD strength
 rank him amongst the breed leaders.

Black PB**Igenity**

Ten	4	CWT	5
YGr	4	Fat	
REA	6	Pct	6
Sta		Marb	5

BENNETT IDEAL G182
 BENNETT KINGPIN K403
 MISS BONUS H321

HIGHLAND HERO 511E
 MS HERO 8862H
 MISS CAMI 01F

DAR National 302N

AMGV 846221

Born: 2/4/2003 Semen:\$ 20

CE BW WW YW MK TM CED ST YG CW REA MB FT CV FM
 9 1.0 66 103 28 61 13 14 -0.33 33 0.90 0.33 0.33 61.42 39.08
 0.80 0.83 0.81 0.81 0.75 0.75 0.25 0.35 0.58 0.31 0.34 0.34

EPDs 12/28/2013 AMF-NHF-CAF-OSF-DDF **Homo Black Homo Polled**

Homozygous black and homozygous polled with three stars of
 tenderness. National sired the second high selling bull at the 2007 Iowa
 Beef Expo. His progeny look great!

Black PB**Igenity**

Ten	CWT
YGr	Fat
REA	Pct
Sta	Marb

ML ADVANTAGE
 VVFG FLYING H EXCLUSIVE
 FLYING H CADISISTER 95E

BUD 11G
 FLYING H MS BUD 240L ET
 WOODLAND BELLE 217B

Black PB

CE BW WW YW MK TM CED ST YG CW REA MB FT CV FM
 5 4.2 80 118 47 87 3 7 -0.13 45 0.53 -0.27 -0.27 -1.25 44.20
 0.85 0.87 0.86 0.85 0.83 0.83 0.43 0.31 0.59 0.25 0.28 0.28

EPDs 12/28/2013 AMF-NHF-CAF-OSF-DDF **Homo Black Homo Polled**

This homo black and polled sire adds weight at weaning and yearling. Look at his volume and rib with the lower birth weights being reported.

OZZ Ideal Direction 8N

AMGV 849194

Born: 1/18/2003 Semen: \$ 20

Igenity

Ten	CWT
YGr	Fat
REA	Pct
Sta	Marb

LEACHMAN NEW DAY 205B
 NEW DIRECTION 905
 CADILLAC LADY 541E

BENNETT IDEAL G182
 IDEAL SWEET 56L
 JET MILADY 150G

Black PB

CE BW WW YW MK TM CED ST YG CW REA MB FT CV FM
 9 -0.1 76 119 38 76 10 8 -0.29 40 0.78 0.14 0.14 45.62 47.77
 0.93 0.94 0.93 0.93 0.91 0.91 0.54 0.38 0.61 0.37 0.40 0.40

EPDs 12/28/2013 AMF-NHF-CAF-OSF-DDF **Homo Black Homo Polled**

Add up all the traits you look for in a bull and Governor covers all the bases. Muscular, phenotypically flawless package with excellent testicular development. Breed-leading EP_D strength for CE, BW, YW, TM, GL, GM and FM - all in the breeds top 25% or better.

OZZ EXT Governor 3N

AMGV 850450

Born: 1/14/2003 Semen: \$ 20

Igenity

Ten	CWT
YGr	Fat
REA	Pct
Sta	Marb

M/L ADVANTAGE
 VVFG FLYING H EXCLUSIVE
 FLYING H CADISISTER 95E

MR A34033E
 CHA MICHELL 74L
 MIDNIGHT SINGER 65H

Black PB

CE BW WW YW MK TM CED ST YG CW REA MB FT CV FM
 7 4.2 105 143 7 60 8 4 -0.34 59 0.90 -0.29 -0.29 -11.35 52.20
 0.86 0.87 0.86 0.86 0.84 0.83 0.58 0.44 0.59 0.49 0.52 0.52

EPDs 12/28/2013 AMF-NHF-CAF-OSF-DDF **Homo Black Multiple Polled**

- Nagurski was a crowd favorite in the 2003 National Gelbvieh Show winning the Division II Championship.
 - He topped the 2003 Iowa Beef Expo Sale at \$9,500.
 - Homozygous black, multiple polled with an excellent opportunity to prove homozygous polled

NORD Nagurski M142J

AMGV 816277

Born: 2/16/2002 Semen: \$ 20

Igenity

Ten	CWT
YGr	Fat
REA	Pct
Sta	Marb

ELK BLACK PLD KENO 26E
 CK BRONCO 411G
 411D

COCOA 35C
 JENNIFER
 JANY POWER ET

Black PB

CE BW WW YW MK TM CED ST YG CW REA MB FT CV FM
 5 3.5 71 97 29 64 4 11 -0.22 32 0.57 -0.15 -0.15 8.70 30.80
 0.86 0.87 0.86 0.86 0.83 0.83 0.60 0.45 0.59 0.51 0.55 0.55

EPDs 12/28/2013 AMF-CAF **Black Double Polled**

MSH Flying H MSH Full Season

AMGV 801713

Born: 2/6/2002 Semen: \$ 30

Igenity

Ten	CWT
YGr	Fat
REA	Pct
Sta	Marb

POLLED GIZMO 17Z
 BERETTA 703G
 VANESSA 19E ET

FLYING H EXTRA 150D
 3H
 F23

Black PB

CE BW WW YW MK TM CED ST YG CW REA MB FT CV FM
 6 5.8 86 123 17 59 6 8 -0.15 51 0.44 -0.32 -0.32 -10.85 45.85
 0.78 0.81 0.78 0.78 0.75 0.75 0.34 0.32 0.57 0.28 0.30 0.30

EPDs 12/28/2013 **Homo Black Homo Polled**

Rawhide was Cedar Top Ranches, NE pick at the 2003 Iowa Beef Expo. He looks to be the next step in genetics from the great Bronco. Rawhide is long, thick and deep, and of course, great profiled.

DAR Rawhide 201M ET

AMGV 795575

Born: 1/25/2002 Semen: \$ 25

Igenity

Ten	CWT
YGr	Fat
REA	Pct
Sta	Marb

ELK BLACK PLD KENO 26E
 CK BRONCO 411G
 411D

POLLED GIZMO 17Z
 WOODLAND BLACKBIRD 62F
 WOODLAND BLACKBIRD 432D

KCF Bennett Acclaim L336

AMGV 780564

Born: 10/4/2001 Semen:\$ 20

CE BW WW YW MK TM CED ST YG CW REA MB FT CV FM
 11 0.2 72 93 19 55 8 7 -0.33 24 0.67 -0.28 -0.28 -8.21 27.11
 0.80 0.82 0.80 0.80 0.75 0.75 0.49 0.33 0.57 0.28 0.32 0.32

EPDs 12/28/2013 CAF **Homo Black** Polled

Black PB**Igenity**

Ten	CWT
YGr	Fat
REA	Pct
Sta	Marb

BENNETT HALLMARK E208
 BENNETT LANDMARK J377
 MISS VIRGINIAN A261

BLACKJACK B538
 MISS BLACKJACK G243
 MISS HORIZON C126

JRI Extra Exposure 285L71 ET

AMGV 757130

Born: 2/18/2001 Semen:\$ 20

CE BW WW YW MK TM CED ST YG CW REA MB FT CV FM
 17 1.4 66 90 22 55 4 1 -0.23 25 0.64 -0.28 -0.28 -7.75 27.97
 0.93 0.93 0.93 0.93 0.91 0.91 0.70 0.50 0.61 0.61 0.65 0.65

EPDs 12/28/2013 AMF-NHF-CAF-OSF-DDF **Hetero Black Homo Polled**

If great cow families with perfect teat/udder systems are a necessity in your program this 2002 National Champion Bull is unmatched. Extra Exposure's dam, Polled Sweetie, was the '95 National Champion Female with an enormous amount of rib, volume and fleshing ability along with a beautiful mammary system. Exposure's maternal grandam, 285A5, has been acclaimed as one of the best females in the beef industry and she's also the dam of Grand Prix, the '96 National Champion Bull that ranks in the breeds top 10% for growth.

Black PB**Igenity**

Ten	CWT
YGr	Fat
REA	Pct
Sta	Marb

BENNETT PREMIER Z104
 FLYING H EXTRA 150D
 MS FHG NITE LADY 50A

POLLED SUMMIT 648U
 MS POLLED SWEETIE 285C6
 MS PLD PREFERENCE 285A5

WVR Weaver Lester 27L

AMGV 759360

Born: 2/14/2001 Semen:\$ 25

CE BW WW YW MK TM CED ST YG CW REA MB FT CV FM
 2 3.1 103 136 11 62 6 7 -0.26 53 0.84 -0.33 -0.33 -10.63 47.68
 0.84 0.86 0.84 0.84 0.82 0.82 0.53 0.33 0.59 0.27 0.31 0.31

EPDs 12/28/2013 CAF **Black** **Homo Polled**

One of the highest performance bulls in the breed. Use him to add muscle and growth.

Black PB**Igenity**

Ten	CWT
YGr	Fat
REA	Pct
Sta	Marb

COCOA 35C
 STAR BUCK
 NETTIE

TEJAS ROLLS ROYCH 868
 CHABLIS
 BMW JULIA

JBOB 3303K ET "Junior"

AMGV 708967

Born: 3/24/2000 Semen:\$ 25

CE BW WW YW MK TM CED ST YG CW REA MB FT CV FM
 8 1.2 67 94 47 80 8 4 -0.34 27 0.65 -0.41 -0.41 -18.24 30.64
 0.88 0.89 0.88 0.88 0.86 0.86 0.49 0.37 0.60 0.35 0.38 0.38

EPDs 12/28/2013 AMF-NHF-CAF-OSF-DDF **Homo Black Homo Polled**

Top selling bull in the JBOB Farms '05 Complete Dispersal Sale. Junior's maternal pedigree features two of the all-time great homozygous black, homozygous polled females in the breed - Miss 92C and Miss August '84Y'. Miss 92C and Miss August '84Y' progeny commanded all the top dollars in the JBOB Dispersal. Proven pedigree, moderate frame, muscle, depth and superior phenotype.

Black PB**Igenity**

Ten	CWT
YGr	Fat
REA	Pct
Sta	Marb

BLACK HUSKER
 ECHO 575E
 CEDAR TOP'S MISS POWER

MR SHERMAN TANK
 MISS 92C
 LL MISS AUGUST

BTI Extra 2106K ET

AMGV 714886

Born: 3/5/2000 Semen:\$ 25

CE BW WW YW MK TM CED ST YG CW REA MB FT CV FM
 13 -0.4 62 81 6 37 10 11 0.09 17 -0.13 -0.19 -0.19 -14.73 22.43
 0.93 0.93 0.93 0.93 0.92 0.92 0.68 0.50 0.61 0.60 0.62 0.62

EPDs 12/28/2013 AMF-NHF-CAF-OSF-DDF **Hetero Black Homo Polled**

2106K is one of Beartooth Ranches, MT hottest bulls right now out of the legendary donor, Lady Granite 2001E. The Extra 2106K calves look ultra complete and sound with plenty of performance. A complete package with phenotype, great dam.

Black PB**Igenity**

Ten	CWT
YGr	Fat
REA	Pct
Sta	Marb

BENNETT PREMIER Z104
 FLYING H EXTRA 150D
 MS FHG NITE LADY 50A

BTI ZORRO 2143Z
 LADY GRANITE 2001E ET
 LADY GRANITE 432S

Black PB

CE BW WW YW MK TM CED ST YG CW REA MB FT CV FM
 6 2.2 68 75 35 69 10 6 -0.32 16 0.33 -0.34 -0.34 -26.4914.18
 0.79 0.81 0.80 0.80 0.76 0.75 0.57 0.31 0.57 0.26 0.29 0.29

PCCI Black Ice 001K**Igenity**

Ten CWT
 YGr Fat
 REA Pct
 Sta Marb

EPDs 12/28/2013 AMF-NHF-CAF-OSF-DDF **Homo Black Homo Polled**

- Black Ice has consistently produced progeny that command all the top dollars.
 - A daughter swept the South Dakota Heifer Futurity and sold \$6,000
 - Numerous Black Ice sons have been Denver Pen Bull winners and sale toppers in the Annual Pearson Cattle Co Bull Sale
 - Proven genetics that will inject phenotype, growth and maternal strength.

Photo
 not
 Available

POLLED GIZMO 17Z
 BERETTA 703G
 VANESSA 19E ET
 BLACKJACK 049F
 825H
 638F

AMGV 703416
 Born: 3/2/2000 Semen: \$ 25

Black PB

CE BW WW YW MK TM CED ST YG CW REA MB FT CV FM
 11 0.4 59 79 31 60 11 7 -0.13 17 0.29 0.18 0.18 22.6722.88
 0.93 0.94 0.93 0.93 0.92 0.92 0.78 0.52 0.61 0.64 0.66 0.66

XXB Drew 565K**Igenity**

Ten CWT
 YGr Fat
 REA Pct
 Sta Marb

EPDs 12/28/2013 AMF-NHF-CAF-OSF-DDF **Homo Black Homo Polled**

This homozygous black, homozygous polled 2001 Breeder's Choice Futurity Champion Bull is proving to be one of the best calving ease sires in the breed. Drew's dam is truly one of the black polled power females in the breed with a 118 weaning weight ratio, 117 yearling weight ratio and excellent teat/udder quality. The acceptance for Drew progeny across the breed has been sensational and his sons perform fantastic on gain test.



FLYING H CADILLAC 184C
 BOO BOO 155E
 X55
 MR BEAU JANGLES 308B
 G565
 D594

AMGV 699882
 Born: 1/7/2000 Semen: \$ 20

Black PB

CE BW WW YW MK TM CED ST YG CW REA MB FT CV FM
 10 1.8 83 110 21 62 4 1 -0.32 37 0.79 -0.36 -0.36 -8.30 35.90
 0.92 0.93 0.92 0.92 0.91 0.91 0.74 0.47 0.61 0.53 0.52 0.52

KCF Bennett Landmark J377**Igenity**

Ten CWT
 YGr Fat
 REA Pct
 Sta Marb

EPDs 12/28/2013 AMF **Hetero Black Polled**

Bennett Landmark was a very popular sire in 2008 and his progeny report and EPD strength are very impressive. Landmark's ultrasound data released by Knoll Crest Farms in the fall of 2003 ranked him as the #1 overall sire group for ribeye and marbling (IMF) the past two years.



BLACKJACK B538
 BENNETT HALLMARK E208
 MISS PREMIER C294
 VIRGINIAN
 MISS VIRGINIAN A261
 MISS FEATURE X148

AMGV 700584
 Born: 11/15/1999 Semen: \$ 20

Black PB

CE BW WW YW MK TM CED ST YG CW REA MB FT CV FM
 9 2.0 76 118 45 83 -4 3 -0.29 42 0.81 0.05 0.05 36.5846.32
 0.95 0.96 0.95 0.95 0.94 0.94 0.68 0.48 0.61 0.55 0.55 0.55

JBOB Carolina Fortune 2564JET**Igenity**

Ten CWT
 YGr Fat
 REA Pct
 Sta Marb

EPDs 12/28/2013 AMF-CAF **Homo Black Homo Polled**

Proven genetics offering extra growth, attractive progeny with EPD's putting your genetics at a higher scale.



254D
 CAROLINA CPR
 719E
 MR SHERMAN TANK
 MISS 92C
 LL MISS AUGUST

AMGV 687061
 Born: 11/10/1999 Semen: \$ 25

Black PB

CE BW WW YW MK TM CED ST YG CW REA MB FT CV FM
 5 3.1 85 109 23 65 10 -3 -0.38 38 0.77 -0.33 -0.33 -5.88 33.57
 0.88 0.89 0.88 0.88 0.86 0.86 0.61 0.40 0.60 0.40 0.42 0.42

JBOB 2279J ET (Carolina RC)**Igenity**

Ten CWT
 YGr Fat
 REA Pct
 Sta Marb

EPDs 12/28/2013 **Black Homo Polled**

Full brother to J-Bob 241J "Julia", the Champion Female at 2001 North American and 2001 National Western. Daughters are long necked, clean fronted, feminine females while sons are high performing with an attractive look. Brings in greatness of Echo and Sherman Tank. Adds pounds, muscle, volume rib in an attractive package.



BLACK HUSKER
 ECHO 575E
 CEDAR TOP'S MISS POWER
 MR SHERMAN TANK
 MISS 92C
 LL MISS AUGUST

AMGV 677948
 Born: 3/30/1999 Semen: \$ 20

MRCO New Direction 905

AMGV 660727

Born: 3/11/1999 Semen:\$ 20

CE BW WW YW MK TM CED ST YG CW REA MB FT CV FM
 16 -0.2 67 88 37 70 8 4 -0.16 21 0.36 -0.31 -0.31 -16.79 25.42
 0.91 0.92 0.91 0.91 0.90 0.90 0.79 0.38 0.60 0.37 0.40 0.40

EPDs 12/28/2013 AMF-NHF-CAF-OSF-DDF **Hetero Black Homo Polled**

New Direction sold for \$15,000 at the 2000 NWSS. He was talked about many times after the 2000 NWSS. He has the outcross genetics for many breeding programs. New Direction has the potential to add calving ease and great phenotype to your program with outstanding growth.

Black PB**Igenity**

Ten	CWT
YGr	Fat
REA	Pct
Sta	Marb

SENSATION'S DAY 21Y
 LEACHMAN NEW DAY 205B
 023Z

FLYING H CADILLAC 184C
 CADILLAC LADY 541E
 FHG MS JOHN HENRY 125B

GRU ELK DEE Jake 744J

AMGV 665323

Born: 2/13/1999 Semen:\$ 20

CE BW WW YW MK TM CED ST YG CW REA MB FT CV FM
 6 3.4 79 115 32 72 9 2 -0.14 42 0.42 0.00 0.00 26.48 42.16
 0.83 0.85 0.83 0.83 0.80 0.80 0.57 0.37 0.58 0.35 0.37 0.37

EPDs 12/28/2013 CAF **Homo Black Multiple Polled**

EXCELLENT EPD's *Birth * Performance *Milk *Feedlot Merit. Daughters are feminine, quiet and attractive. Sons are clean patterned, high performance and are stylish, well balanced bulls with large testicles. Jake is a 2009 Breed Trait Leader for Yearling Weight, Scrotal, and Feedlot Merit. He ranks in the Top 25% for WW, CW, REA, MB and CV.

Black PB**Igenity**

Ten	CWT
YGr	Fat
REA	Pct
Sta	Marb

FLYING H CADILLAC 184C
 BOO BOO 155E
 X55

COCOA 35C
 MS COCOA 744G
 MS COPYRIGHT 508E

MLH Goldrush Visa J40

AMGV 656554

Born: 2/4/1999 Semen:\$ 22

CE BW WW YW MK TM CED ST YG CW REA MB FT CV FM
 5 0.7 71 105 9 44 13 9 -0.08 33 0.35 -0.05 -0.05 18.29 38.33
 0.92 0.93 0.93 0.92 0.91 0.91 0.64 0.43 0.61 0.46 0.46 0.46

EPDs 12/28/2013 AMF-NHF-OSF-DDF **Homo Black Homo Polled**

Visa combines calving ease and growth potential, not to mention maternal strength. Out of an outstanding Polled Midnight daughter that is big volumed and heavy milking. Use VISA to keep calves black, polled, and add tremendous performance, muscle dimension, and eye appeal. 5.61 for "GM" (Grid Merit EPD: expressed in dollars, carcass merit value passed to progeny) is in the top 4% of the breed. 25.06 for FM (Feedlot Merit EPD, expressed in dollars, feedlot value passed on to progeny) is in the top 1% of the breed.

Black PB**Igenity**

Ten	CWT
YGr	Fat
REA	Pct
Sta	Marb

BENNETT PREMIER Z104
 M/L ADVANTAGE
 CEDAR TOP'S PERFECTA

POLLED MIDNIGHT
 MISS GOLDRUSH F42
 114A

SPUR Kings Ransome 901J ET

AMGV 651478

Born: 1/21/1999 Semen:\$ 10

CE BW WW YW MK TM CED ST YG CW REA MB FT CV FM
 4 1.7 73 100 24 61 9 8 -0.33 31 0.96 -0.18 -0.18 9.42 32.71
 0.89 0.90 0.89 0.89 0.88 0.88 0.66 0.36 0.60 0.33 0.28 0.28

EPDs 12/28/2013 AMF-CAF **Homo Black Homo Polled**

The pedigree says: good females are on the way. The lower birth to great growth is adding to this homo black and polled sires ability to produce outstanding progeny.

Black PB**Igenity**

Ten	6	CWT
YGr	6	Fat
REA	5	Pct
Sta	7	Marb
		6
		6

BOO BOO 155E
 BUD 11G
 KATIE

BACKDRAFT 2079B ET
 VANESSA 19E ET
 MS SANDHILLER Z011P

GKT Dusty 16J

AMGV 655343

Born: 1/6/1999 Semen:\$ 25

CE BW WW YW MK TM CED ST YG CW REA MB FT CV FM
 15 -0.4 56 81 20 48 11 8 -0.46 17 0.88 -0.40 -0.40 -23.10 25.91
 0.85 0.87 0.86 0.85 0.82 0.82 0.61 0.40 0.59 0.41 0.43 0.43

EPDs 12/28/2013 **Homo Black Homo Polled**

The \$17,000 bull that should receive a great deal of attention from producers that are breeding their first calf heifers. Style with substance is an apt description of Dusty. First calves are coming easy and to date all appear to be polled. The bull deserves your attention -- he will be an "impact player". Recommended for first calf heifers.

Black PB**Igenity**

Ten	CWT
YGr	Fat
REA	Pct
Sta	Marb

BOO BOO 155E
 BUD 11G
 KATIE

OTIS ET
 45F
 GAUGLER LADY 440D

Black PB

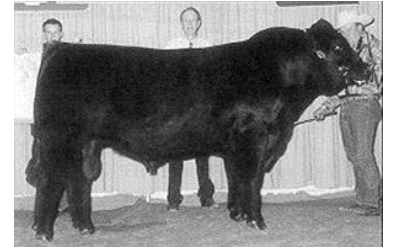
CE BW WW YW MK TM CED ST YG CW REA MB FT CV FM
 1 2.1 65 81 34 66 5 11 -0.21 20 0.44 -0.25 -0.25 -12.3120.40
 0.93 0.94 0.93 0.93 0.92 0.92 0.81 0.49 0.61 0.57 0.59 0.59

SPUR Beretta 703G**Igenity**

Ten CWT
 YGr Fat
 REA Pct
 Sta Marb

EPDs 12/28/2013 AMF-NHF-CAF-OSF-DDF **Hetero Black Homo Polled**

Beretta is an impressive individual having been selected the 1999 Breeders Choice Futurity Champion Bull at the Reserve Western Stock Show. His progeny are just as impressive with great structure and disposition to go with tremendous eye appeal. Beretta has made outstanding females for many years.



AMGV 594663

Born: 9/20/1997 Semen: \$ 20

TEJAS ROLLS ROYCH 868
 POLLED GIZMO 17Z
 MS. SENSATION 31X

BACKDRAFT 2079B ET
 VANESSA 19E ET
 MS SANDHILLER 2011P

Black PB

CE BW WW YW MK TM CED ST YG CW REA MB FT CV FM
 11 3.6 92 134 2 47 6 3 -0.27 54 0.71 -0.30 -0.30 -7.88 52.61
 0.94 0.95 0.94 0.94 0.93 0.93 0.84 0.53 0.61 0.66 0.65 0.65

ELK CK Bronco 411G**Igenity**

Ten CWT
 YGr Fat
 REA Pct
 Sta Marb

EPDs 12/28/2013 AMF-NHF-OSF-DDF **Homo Black Homo Polled**

Bronco will be an outcross for many programs and adds performance and eye appeal to his progeny. His balance of traits along with his physical eye appeal will add many dollars to his progeny. Look for his progeny to be the most talked about Gelbvieh, whether it be at shows or on weigh day.



AMGV 586994

Born: 4/10/1997 Semen: \$ 30

FLYING H CADILLAC 184C
 ELK BLACK PLD KENO 26E
 MS GIL PADDY 110W 11Z

CK NIGHT TRAIN POLL 28Z
 411D
 250X

Black PB

CE BW WW YW MK TM CED ST YG CW REA MB FT CV FM
 13 -1.3 73 94 29 65 12 2 -0.31 23 0.51 -0.30 -0.30 -12.8927.51
 0.96 0.96 0.96 0.95 0.95 0.95 0.88 0.51 0.61 0.62 0.62 0.62

RTC Atlas 712G**Igenity**

Ten CWT
 YGr Fat
 REA Pct
 Sta Marb

EPDs 12/28/2013 AMF-NHF-CAF-OSF-DDF **Homo Black Homo Polled**

Atlas is a high trait leader for calving ease and weaning weight. He adds great phenotype with muscle and volume. Atlas' dam is a great maternal cow with a super udder. Atlas will add dollars with his black attractive progeny.



AMGV 580562

Born: 2/20/1997 Semen: \$ 20

POLLED MIDNIGHT
 COCOA 35C
 MISS KAISER 449Y

BENNETT PREMIER Z104
 414D
 NUGGETTE 124A

Black PB

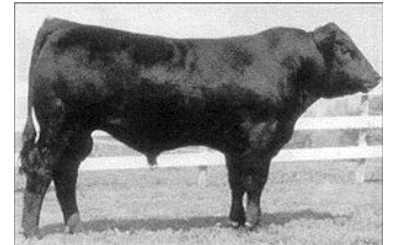
CE BW WW YW MK TM CED ST YG CW REA MB FT CV FM
 13 -0.2 69 92 19 53 9 0 -0.45 23 1.15 -0.18 -0.18 5.24 28.20
 0.93 0.94 0.93 0.93 0.92 0.92 0.84 0.50 0.61 0.58 0.58 0.58

GKT Bud 11G**Igenity**

Ten CWT
 YGr Fat
 REA Pct
 Sta Marb

EPDs 12/28/2013 AMF-NHF-OSF-DDF **Hetero Black Homo Polled**

Bud was the 1998 Grand Champion Bull at the National Western Stock Show and the 1998 Breeders Choice Futurity Champion bull. Bud puts calving ease, growth, and eye appeal in his progeny. His first calf crop has created excitement across the United States.



AMGV 567881

Born: 1/5/1997 Semen: \$ 20

FLYING H CADILLAC 184C
 BOO BOO 155E
 X55

MR PEPPER SHAKER
 KATIE
 PRAIRIE LIZA A22

Black PB

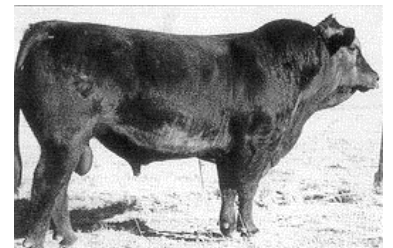
CE BW WW YW MK TM CED ST YG CW REA MB FT CV FM
 20 -1.8 42 59 20 41 12 9 -0.33 2 0.38 -0.22 -0.22 -32.9914.99
 0.91 0.92 0.91 0.91 0.89 0.89 0.79 0.43 0.60 0.46 0.49 0.49

ELK Ace Ventura 234F**Igenity**

Ten CWT
 YGr Fat
 REA Pct
 Sta Marb

EPDs 12/28/2013 AMF-NHF-CAF-OSF-DDF **Homo Black Homo Polled**

Ace Ventura is a sire to use on heifers and expect almost no assistance and the calves will be black and polled. The females are heavy milking, easy fleshing, and good uddered. Ace Ventura will work well on large frame females.



AMGV 536298

Born: 3/13/1996 Semen: \$ 18

BENNETT PREMIER Z104
 M/L ADVANTAGE
 CEDAR TOP'S PERFECTA

ACE OF SPADES 10X
 SPADES LADY DPBK 234A
 MISS BLK IMP 11X

EGR Ellison 608F "Mitch"

AMGV 541139

Born: 3/10/1996 Semen:\$ 18

CE BW WW YW MK TM CED ST YG CW REA MB FT CV FM
 18 -0.8 43 53 28 49 11 7 -0.22 -1 0.17 -0.07 -0.07 -27.38 9.77
 0.74 0.78 0.75 0.74 0.66 0.66 0.56 0.30 0.55 0.27 0.29 0.29

EPDs 12/28/2013

Homo Black Homo Polled

"Mitch" will give the breeder calving ease along with new genetics for many breeding programs. The calves are vigorous at birth but keep growing with nice tops, expression of muscling and plenty of capacity. Look for Mitch to add maternal traits and a great set of daughters to the most discriminating breeding programs.

Black PB**Igenity**

Ten	CWT
YGr	Fat
REA	Pct
Sta	Marb

TEJAS ROLLS ROYCH 868
 BLACK TIE 123A
 MISS MCG 59X

BLACK BOB
 D7
 B76

JCGR BAR GT Einstein

AMGV 520797

Born: 2/12/1996 Semen:\$ 20

CE BW WW YW MK TM CED ST YG CW REA MB FT CV FM
 -1 4.0 86 123 25 67 10 -6 -0.19 48 0.49 -0.32 -0.32 -8.41 45.91
 0.90 0.91 0.90 0.90 0.88 0.88 0.76 0.40 0.60 0.41 0.41 0.41

EPDs 12/28/2013

Black Homo Polled

Einstein is certainly a growth bull that produces progeny with eye appeal. Progeny will have a smooth muscle pattern with depth of rib, volume, and the correctness to improve quality. Use Einstein to add growth!

Black PB**Igenity**

Ten	CWT
YGr	Fat
REA	Pct
Sta	Marb

POLLED MIDNIGHT
 COCOA 35C
 MISS KAISER 449Y

PRIME RATE
 MISS PRIME RATE 54U
 114S

CTRG Vision 52E

AMGV 544174

Born: 9/9/1995 Semen:\$ 15

CE BW WW YW MK TM CED ST YG CW REA MB FT CV FM
 10 0.2 59 81 19 49 7 9 -0.24 18 0.58 -0.34 -0.34 -20.04 24.29
 0.83 0.85 0.83 0.83 0.80 0.80 0.68 0.42 0.58 0.45 0.49 0.49

EPDs 12/28/2013

Homo Black Homo Polled

CTRG Vision 52E is a recently released syndication bull that has been not available to the public. Vision is the ultimate female producer. They are feminine fronted and very structurally correct with perfect udders. Commercial cattlemen have demanded sons for years at bull sales where available. Vision sons have been sale toppers for many years. Use this great breeding bull to add marketability and quality to your calf crop.

Black PB**Igenity**

Ten	CWT
YGr	Fat
REA	Pct
Sta	Marb

POLLED MIDNIGHT
 BLACK HUSKER
 30X

TEJAS ROLLS ROYCH 868
 CEDAR TOPS 010Y
 BLACK POLL STARR 212W

CTR Echo 575E

AMGV 488923

Born: 4/2/1995 Semen:\$ 20

CE BW WW YW MK TM CED ST YG CW REA MB FT CV FM
 8 2.0 64 79 38 70 9 9 -0.44 18 0.84 -0.61 -0.61 -42.73 19.39
 0.95 0.95 0.95 0.95 0.94 0.94 0.87 0.54 0.61 0.69 0.70 0.70

EPDs 12/28/2013

AMF-NHF-OSF-DDF

Homo Black Homo Polled

Echo is one of the most popular black sires in the breed. He consistently sires thick, wide based, stout, feminine females with plenty of milk. His progeny have more Grand and Reserve Champions than any other sire. If muscle, correct structure, and overall quality are your needs in Gelbvieh, look no further.

Black PB**Igenity**

Ten	CWT
YGr	Fat
REA	Pct
Sta	Marb

POLLED MIDNIGHT
 BLACK HUSKER
 30X

TOM HORN
 CEDAR TOP'S MISS POWER
 STAR FLOPRIM 659U

MLLC M/L Encore

AMGV 477160

Born: 1/26/1995 Semen:\$ 25

CE BW WW YW MK TM CED ST YG CW REA MB FT CV FM
 18 -1.1 52 77 25 51 6 17 -0.34 14 0.66 -0.05 -0.05 2.18 24.65
 0.92 0.93 0.92 0.92 0.90 0.90 0.79 0.52 0.61 0.63 0.59 0.59

EPDs 12/28/2013

AMF-NHF

Homo Black Homo Polled

A Gelbvieh breed Trait Leader for Ribeye Area, Calving Ease, Gestation Length, and Daughter's Calving Ease. A 7-Star Trait Sire. Homozygous black and homozygous polled.

- Proven heifer bull that sires cattle that will grow and grade
- Sires moderate framed, easy fleshing, nice udders, maternally oriented daughters
- Rock Solid - Birth Weight & Performance

Black PB**Igenity**

Ten	CWT
YGr	Fat
REA	Pct
Sta	Marb

BENNETT PREMIER Z104
 M/L ADVANTAGE
 CEDAR TOP'S PERFECTA

POLLED MIDNIGHT
 M/L MISS MIDNIGHT 333C
 GINGER

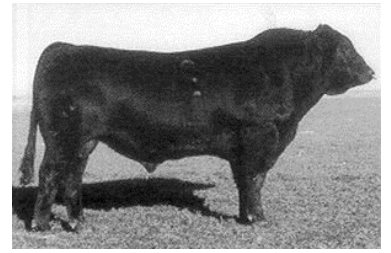
Black PB

CE BW WW YW MK TM CED ST YG CW REA MB FT CV FM
 13 -1.8 55 66 42 70 12 9 -0.15 5 -0.01-0.45 -0.45-50.7913.95
 0.89 0.90 0.89 0.89 0.87 0.87 0.79 0.43 0.60 0.47 0.50 0.50

EPDs 12/28/2013

Black Polled

Limited Edition has been a standby for calving ease. He currently is a trait leader for calving ease, birth weight, milk, gestation length, and calving ease of daughters. His daughters are easy fleshing with muscle and volume. Limited Edition's dam, Tiffany, is famous at Cedar Top Ranch and has continued to be an elite cow in the breed.

CTRG Limited Edition 411D1

AMGV 439840

Born: 3/17/1994 Semen:\$ 15

Igenity

Ten	CWT
YGr	Fat
REA	Pct
Sta	Marb

VIRGINIAN

BENNETT PREMIER Z104
GARST COW R9599

BLACK HUSKER

CEDAR TOP'S TIFFANY
CEDAR TOPS TIFFANY**Black PB**

CE BW WW YW MK TM CED ST YG CW REA MB FT CV FM
 17 -0.8 54 59 21 48 7 10 -0.16 2 0.26 -0.02 -0.02-18.25 9.46
 0.96 0.97 0.96 0.96 0.96 0.96 0.90 0.57 0.61 0.76 0.75 0.75

EPDs 12/28/2013 AMF-NHF-CAF-OSF-DDF **Homo Black Homo Polled**

Extra is a highly proven calving ease bull with the added feature of being homozygous black and homozygous polled. Along with being a heavily used sire, he produces marketability in his progeny. He has been used on large frame cows and higher birth weight females to moderate the progeny.

FHG Flying H Extra 150D

AMGV 427849

Born: 2/25/1994 Semen:\$ 20

Igenity

Ten	CWT
YGr	Fat
REA	Pct
Sta	Marb

VIRGINIAN

BENNETT PREMIER Z104
GARST COW R9599

NIGHT HAWK 08X

MS FHG NITE LADY 50A
MR FHG BEL BOY 114Y**Black PB**

CE BW WW YW MK TM CED ST YG CW REA MB FT CV FM
 6 3.7 75 98 28 66 3 7 -0.14 32 0.28 0.08 0.08 28.3329.14
 0.94 0.94 0.94 0.94 0.93 0.93 0.86 0.53 0.61 0.67 0.70 0.70

EPDs 12/28/2013

Homo Black Polled

Carolina Power is a calving ease specialist. Progeny have great performance and eye appeal. Daughters milk very well with lots of phenotype. Produces sons with eye appeal that generate dollars. Supply is limited due to Power's death.

JJOB Carolina Power

AMGV 408724

Born: 9/9/1993 Semen:\$ 20

Igenity

Ten	CWT
YGr	Fat
REA	Pct
Sta	Marb

VIRGINIAN

BENNETT PREMIER Z104
GARST COW R9599

CORNHUSKER RED

MISS HUSKER 029Z
MISS FLOTATION 719W**Black PB**

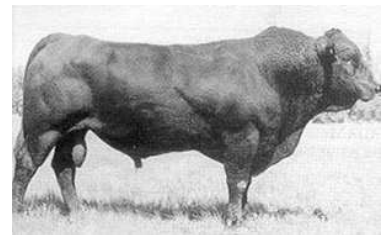
CE BW WW YW MK TM CED ST YG CW REA MB FT CV FM
 14 0.3 63 97 32 63 10 14 -0.22 28 0.51 0.01 0.01 22.5835.69
 0.93 0.93 0.93 0.93 0.92 0.92 0.84 0.49 0.61 0.57 0.57 0.57

EPDs 12/28/2013

AMF-NHF

Homo Black Homo Polled

A 10-Star Trait Sire and Gelbvieh breed Trait Leader for Marbling, Carcass Value, Feedlot Merit, Stayability, & Daughter's Calving Ease. Homozygous black, homozygous polled. Rock solid EPD's across the board, and will add dollars to your calves.

MLLC M/L Advantage

AMGV 375086

Born: 3/19/1993 Semen:\$ 20

Igenity

Ten	CWT
YGr	Fat
REA	Pct
Sta	Marb

VIRGINIAN

BENNETT PREMIER Z104
GARST COW R9599

TOM HORN

CEDAR TOP'S PERFECTA
863X**Black PB**

CE BW WW YW MK TM CED ST YG CW REA MB FT CV FM
 9 3.5 75 106 27 65 12 7 -0.13 37 0.45 -0.18 -0.18 6.96 35.91
 0.91 0.92 0.91 0.91 0.90 0.90 0.84 0.54 0.60 0.69 0.71 0.71

EPDs 12/28/2013

CAF

Black Polled

There are a few units of semen left on this proven sire.

FHG Flying H Cadillac 184C

AMGV 384878

Born: 3/6/1993 Semen:\$ 15

Igenity

Ten	CWT
YGr	Fat
REA	Pct
Sta	Marb

VIRGINIAN

BENNETT PREMIER Z104
GARST COW R9599

BEL BOY 367U

22Y
MS FLYING H 43U

TLR Cocoa 35C

AMGV 405990

Born: 3/1/1993 Semen:\$ 15

CE BW WW YW MK TM CED ST YG CW REA MB FT CV FM
 3 1.7 83 121 35 77 10 4 -0.26 43 0.65 -0.06 -0.06 22.74 45.09
 0.96 0.96 0.96 0.96 0.95 0.95 0.90 0.56 0.61 0.73 0.74 0.74

EPDs 12/28/2013 AMF-NHF-CAF-OSF-DDF **Hetero Black Polled**

Cocoa has continued to be one of the more popular sires. The 1995 NWSS National Champion Bull has proven to have calving ease, great growth and add eye appeal to any program. This highly proven bull sires muscle, style, and correctness.

Black PB**Igenity**

Ten	CWT
YGr	Fat
REA	Pct
Sta	Marb

TRAITMAKER
 POLLED MIDNIGHT
 411S

KAISER
 MISS KAISER 449Y
 MS WITCHCRAFT 37W ET

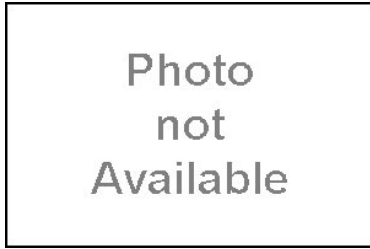
Rippe In Focus 373A

Photo
 not
 Available

AMGV 1257461

Born: 2/10/2013 Semen:\$ 25

CE BW WW YW MK TM CED ST YG CW REA MB FT CV FM
 17 -2.8 73 103 27 63 8 N/A 0.05 29 0.24 0.64 0.64 81.41 35.41
 0.31 0.33 0.28 1+ 0.22 0.24 0.15 0.23 0.14 0.15 0.15

EPDs 12/28/2013 OSF **Homo Black Homo Polled****Balancer 50%****Igenity**

Ten	CWT
YGr	Fat
REA	Pct
Sta	Marb

DVA SCOUT 553
 LAZY TV WATCHMAN W021
 LAZY TV MS PETERBLT T309

MYTTY IN FOCUS
 MS MYTTY 161Y
 MISS 749T ET

DLW White Sand 0318A

AMGV 1254348

Born: 2/7/2013 Semen:\$ 25

CE BW WW YW MK TM CED ST YG CW REA MB FT CV FM
 10 0.8 82 112 24 65 9 N/A -0.03 44 0.47 0.59 0.59 88.55 37.89
 0.28 0.31 0.27 1+ 0.17 0.19 0.10 0.22 0.07 0.07 0.07

EPDs 12/28/2013 AMF-NHF-CAF-OSF **Hetero Black Homo Polled**

White Sand is the natural calf out of an upcoming young donor at Warner Beef. The Sandhills progeny have been in high demand this year and a Sandhills son was chosen the Balancer Futurity Champion in Denver. Rarely do you come across a bull that is as sound and complete as this special bull. Topo 2% WW, 12% YW 4% MB. Herd bull potential.

Balancer 50%**Igenity**

Ten	CWT
YGr	Fat
REA	Pct
Sta	Marb

SANDMAN 6523S
 CTR SANDHILLS 0065X
 7281T

G A R PREDESTINED
 MS DESTINY 318X ET
 FLYING H AT/95E 318M ET

DLW Avalanche 045A

AMGV 1254347

Born: 1/24/2013 Semen:\$ 25

CE BW WW YW MK TM CED ST YG CW REA MB FT CV FM
 13 0.5 75 110 31 69 8 N/A -0.24 37 0.68 0.14 0.14 42.46 40.61
 0.29 0.33 0.28 1+ 0.19 0.21 0.13 0.23 0.10 0.11 0.11

EPDs 12/28/2013 **Homo Black Double Polled**

We really like the Wardon 24W progeny and I feel like you will love this bull. One of the big Stout, rugged bulls in the offering. Additionally he comes from a young cow that is making her own path as she sold a great full brother last year that was easily in the top 10 of our 2013 sale. Top 15% of the breed for growth and has the power to back it up. If you sell cattle by the pound then find this bull he won't disappoint you.

- Dan Warner

Balancer 50%**Igenity**

Ten	CWT
YGr	Fat
REA	Pct
Sta	Marb

BLACK IMPACT 3960N
 WARDON 24W OF 408
 MS KINGPIN 408P

S A V BISMARCK 5682
 MS BISMARCK 045X
 NEW DESIGN 8083U

EGL Remuda Z339

AMGV 1229516

Born: 3/28/2012 Semen:\$ 40

CE BW WW YW MK TM CED ST YG CW REA MB FT CV FM
 5 2.3 60 92 25 55 8 N/A -0.19 28 0.68 0.00 0.00 22.87 32.89
 0.29 0.33 0.30 0.31 0.19 0.20 0.19 0.26 0.15 0.17 0.17

EPDs 12/28/2013 AMF-NHF-CAF-OSF-DDF **Homo Black Polled**

In Denver he was the high scanning IMF bull in the futurity with 4.10% and had a 20.25" ribeye. On his yearling feed test he converted at 2.64:1 with a 3.58 ADG and 9.45 DMI. 10% discount on 50 units and 20% on 100 units.

Balancer 38%**Igenity**

Ten	CWT
YGr	Fat
REA	Pct
Sta	Marb

NORTHERN DANCER U659
 ROUNDUP X777
 P783

NORTHERN WIND P068 ET
 W864
 EGL 0259

Balancer 25%

CE BW WW YW MK TM CED ST YG CW REA MB FT CV FM
 10 0.7 95 157 29 76 6 N/A 0.06 64 0.42 0.53 0.53 76.0372.29
 0.31 0.34 0.29 0.28 0.23 0.24 0.18 0.24 0.19 0.19 0.19

EPDs 12/28/2013

Black Homo Polled

- SGRI Jacked-UP Z704 was our choice of Balancer bulls in 2013 sale season.

Selling for %17,000, Jacked-Up possesses off the chart performance EPDs, with actual numbers to back it up. He is black Homo Polled bull with ideal frame score of 6.2.

- Z704 is easily the answer to oincorporate Heterosis into your cowherd: 25% Gelbvieh, 50% Angus, 25% Red Angus.

- Actuals: BW 85, WW 860, YW 1627

SGRI SGRI Jacked Up Z704

AMGV 1214573

Born: 2/16/2012 Semen: \$ 25

Igenity

Ten	CWT
YGr	Fat
REA	Pct
Sta	Marb

CONNEALY ONWARD
SITZ UPWARD 307R
SITZ HENRIETTA PRIDE 81M

HXC JACKHAMMER 8800U
X003
U908

Balancer 50%

CE BW WW YW MK TM CED ST YG CW REA MB FT CV FM
 15 -1.0 75 118 33 70 10 N/A 0.07 38 0.20 0.39 0.39 64.8447.42
 0.30 0.33 0.29 0.30 0.22 0.22 0.13 0.25 0.11 0.11 0.11

EPDs 12/28/2013 AMF-NHF-CAF-OSF-DDF **Homo Black Homo Polled****DCSF Post Rock Highly Focused**

AMGV 1219898

Born: 10/17/2011 Semen: \$ 25

Igenity

Ten	CWT
YGr	Fat
REA	Pct
Sta	Marb

MYTTY IN FOCUS
KCF BENNETT QUALITY FOCUSE
K C F MISS QUALITY P164

POST ROCK MASS APPEAL ET
POST ROCK SANDY 273W2
POST ROCK SANDY 268T8

Balancer 38%

CE BW WW YW MK TM CED ST YG CW REA MB FT CV FM
 7 2.2 61 102 24 55 10 N/A -0.05 34 0.41 0.36 0.36 61.2440.96
 0.49 0.71 0.63 0.58 0.27 0.27 0.28 0.47 0.22 0.26 0.26

EPDs 12/28/2013 AMF-NHF-CAF-OSF **Homo Black Double Polled**

*FLASH: 2012 National Champion Balancer Bull *Roundup is the first son sold from the 2010 National Champion Balancer Bull EGL Northern Dancer U659. *He is stamped from the same mold with a huge hip, tremendous rib shape and impeccable structure. *Roundup is verified "feed efficient" with a super 103 RFI ratio and this meat machine posted a carcass plus 4.68% IMF (130 ratio).

EGL Roundup X777

AMGV 1164313

Born: 3/22/2010 Semen: \$ 20

Igenity

Ten	CWT
YGr	Fat
REA	Pct
Sta	Marb

LUDACRIS 039S ET
NORTHERN DANCER U659
EGL MISS IMPROV 2212

GUIDO K051 ET
P783
EGL 0250

Balancer 50%

CE BW WW YW MK TM CED ST YG CW REA MB FT CV FM
 14 -1.6 73 102 28 64 5 N/A -0.28 27 0.91 0.15 0.15 38.6334.62
 0.41 0.50 0.40 0.39 0.24 0.25 0.21 0.33 0.17 0.19 0.19

EPDs 12/28/2013

Red Homo Polled

Homozygous polled out of one of the top females in the Sienknecht Cattle Co program. Top 1/3 of the breed for CE, BW, MB, CV and FM. Top 2% for WW and YW. Top 3% for REA. A strong phenotype with the outstanding EPD strength. Use him with confidence on virgin heifers. Daughters should make excellent replacements. -Randy Sienknecht.

Lars Sundown

AMGV 1156041

Born: 3/19/2010 Semen: \$ 20

Igenity

Ten	CWT
YGr	Fat
REA	Pct
Sta	Marb

MYTTY IN FOCUS
MR FOCUS MACH 775T
MISS MIDNIGHT MACH P220

BFCK CHEROKEE CNYN 4912
FLYING H ME CC 49R
FLYING H IDEAL 310L

Balancer 38%

CE BW WW YW MK TM CED ST YG CW REA MB FT CV FM
 6 2.1 67 97 22 56 8 N/A -0.01 30 0.30 0.06 0.06 26.0532.74
 0.40 0.48 0.39 0.38 0.26 0.27 0.22 0.32 0.21 0.24 0.24

EPDs 12/28/2013

Black Homo Polled

Industry 301X covers all the bases in terms of modern day low input beef production. Carrying on the legacy of his sire Connealy Industry 5634 with progeny that excel within their contemporary group. Notorious for siring wide based big bodied cattle that will weigh. Backed by a cow power Industry's dam that has consistently had a top end calf every year and she will calve early again at the age of 10. Her true value lies in her fertility and she has never missed an AI mating. Look for Industry 301X to sire the attractive powerful sons and the profitable fertile females that will keep you in business for a lifetime.

DLW Industry 301X

AMGV 1160030

Born: 2/22/2010 Semen: \$ 25

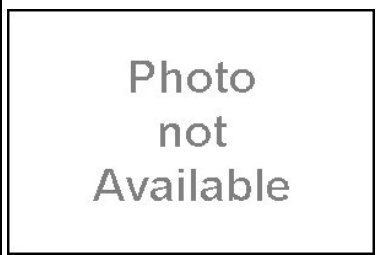
Igenity

Ten	CWT
YGr	Fat
REA	Pct
Sta	Marb

CONNEALY FREIGHTLINER
CONNEALY INDUSTRY 5634
EILERA OF CONANGA 2583

RJ HIGHLIGHT 732H
MS HIGHLIGHT 301N
MISS 230D

EGL Firework X130 ET



CE BW WW YW MK TM CED ST YG CW REA MB FT CV FM
 13 -1.7 56 93 25 53 10 N/A-0.24 23 0.55 0.29 0.29 44.89 36.13
 0.49 0.67 0.56 0.50 0.28 0.29 0.26 0.42 0.23 0.25 0.25

EPDs 12/28/2013 CAF-DDF **Hetero Black Homo Polled**

Lot 1 in the 2011 Eagle Pass Bull Sale, sired by EXAR New Look, 1407 out of EXT's dam and out of the gelbvieh great Promises Promises, now deceased. % IMF ratio of 154 and 101 REA ratio. Homo Polled, Hetro Black

AMGV 1165481
 Born: 2/8/2010 Semen:\$ 20

Balancer 50%

Igenity	
Ten	CWT
YGr	Fat
REA	Pct
Sta	Marb

BON VIEW NEW DESIGN 1407
 EXAR NEW LOOK 2971
 N BAR PRIMROSE 2424
 FREEDOM 178F ET
 PROMISES PROMISES 29L3
 29K

VRT Lazy TV Tank X315



CE BW WW YW MK TM CED ST YG CW REA MB FT CV FM
 13 -0.6 85 140 29 71 11 N/A-0.10 52 0.53 0.35 0.35 65.88 61.90
 0.53 0.77 0.69 0.67 0.27 0.27 0.32 0.52 0.29 0.32 0.32

EPDs 12/28/2013 CAF **Homo Black Polled**

AMGV 1162369
 Born: 2/2/2010 Semen:\$ 25

Balancer 50%

Igenity	
Ten	CWT
YGr	Fat
REA	Pct
Sta	Marb

SITZ TRAVELER 8180
 S A V FINAL ANSWER 0035
 S A V EMULOUS 8145
 VVFG FLYING H EXCLUSIVE
 LAZY TV MS EXCLUSVE U133
 LAZY TV MS POWER S204

JRI Marshall 214X2



CE BW WW YW MK TM CED ST YG CW REA MB FT CV FM
 17 -1.9 62 102 20 51 10 N/A-0.03 28 0.20 0.39 0.39 56.81 40.41
 0.32 0.34 0.31 0.32 0.24 0.25 0.17 0.27 0.17 0.17 0.17

EPDs 12/28/2013 AMF-NHF-CAF-OSF-DDF **Black Homo Polled**

*Calving ease genetics loaded with performance, fertility and carcass merit. *Weaned off a first calf heifer at 82% of her body weight. *4.46 lb ADG...#3 top gainer out of 100+ bulls gain tested. *Prolific Dam of Merit cow family.

AMGV 1152366
 Born: 1/20/2010 Semen:\$ 20

Balancer 50%

Igenity	
Ten	5 CWT
YGr	6 Fat
REA	4 Pct 6
Sta	6 Marb 6

S A F FOCUS OF E R
 MYTTY IN FOCUS
 MYTTY COUNTESS 906
 TOP SECRET 253M75 ET
 MS BLACK SECRET 214U88
 MS LUCKY STARS 214R78 ET

VER PRTY Upgrade 0150X ET



CE BW WW YW MK TM CED ST YG CW REA MB FT CV FM
 7 3.0 48 73 29 53 5 N/A-0.38 18 0.88 0.20 0.20 31.07 22.94
 0.41 0.47 0.40 0.38 0.29 0.30 0.22 0.32 0.22 0.22 0.22

EPDs 12/28/2013 AMF-NHF-CAF-OSF-DDF **Homo Black Homo Polled**

0150X is a Homo Black and Homo polled Balancer bull with cow power on both sides of his pedigree. This meatmachine combines the NWSS Champion, BC Raven and Verner Farms no miss purebred doner, Julia. Julia is best known for making powerful, massive, fault free bulls that sell themselves. 0150X has a flawless phenotype with a stacked pedigree that makes him an easy choice to become the next breed improving sire. Actual scrotal is 43CM and Frame Score is 6.1.

AMGV 1143753
 Born: 1/18/2010 Semen:\$ 25

Balancer 50%

Igenity	
Ten	CWT
YGr	Fat
REA	Pct
Sta	Marb

B C MARATHON 7022
 BC 7022 RAVEN 7965
 O C C BLACKBIRD 796F
 ECHO 575E
 2417J ET
 MISS 92C

SDCG X-Factor 202X



CE BW WW YW MK TM CED ST YG CW REA MB FT CV FM
 9 0.7 52 73 35 61 7 6 -0.07 14 0.16 0.11 0.11 11.83 21.45
 0.57 0.77 0.69 0.68 0.30 0.30 0.30 0.52 0.25 0.28 0.28

EPDs 12/28/2013 AMF-NHF-CAF-OSF-DDF **Homo Black Homo Polled**

- X-Factor swept the 2011 People's Choice Balancer Futurity Championship.
 - He combines calving ease with explosive growth and X-Factor really excels in the carcass merit.
 - Note his carcass plus Igenity report...9 tenderness, 7 marbling and 7 percent choice DNA.
 - Rock solid genetics stemming from a highly proven widespread birth to growth Dam of Merit cow family.

AMGV 1142102
 Born: 1/15/2010 Semen:\$ 25

Balancer 50%

Igenity	
Ten	9 CWT
YGr	7 Fat
REA	5 Pct 7
Sta	7 Marb 7

TAU KRUGERRAND 70M
 MR KRUGERRAND 70M 130P
 MS COCO 052KA 437D
 JUST RIGHT 710J
 MS RIGHT 202M
 MS RAIDER 074K

Balancer 50%

CE BW WW YW MK TM CED ST YG CW REA MB FT CV FM
 18 -3.3 38 60 32 51 11 N/A-0.48 1 0.93 -0.02 -0.02-13.0818.36
 0.49 0.67 0.59 0.55 0.25 0.25 0.30 0.45 0.28 0.32 0.32

DJS Derringer 96X

AMGV 1155651

Born: 1/10/2010 Semen:\$ 25

Igenity

Ten	CWT
YGr	Fat
REA	Pct
Sta	Marb

EPDs 12/28/2013

Homo Black Homo Polled

Proven heifer bull. Derringer is siring unmatched type and kind. Calves are coming easy with great vigor. Derringer sire groups are among the top in both Swanson and LeDoux herds. Excellent choice for calving ease in Balancer programs. \$20/unit for orders over 30 units.

HONOR ROLL S232
 GUNSLINGER 19U
 GUNNISON 5151R
 S A V 8180 TRAVELER 004
 MISS 004-76T
 MARTHA OF PLATTEMERE 325

Balancer 75%

CE BW WW YW MK TM CED ST YG CW REA MB FT CV FM
 6 3.3 74 104 21 59 3 N/A-0.13 36 0.40 -0.07 -0.07 17.2335.19
 0.35 0.43 0.35 0.34 0.22 0.23 0.10 0.29 0.06 0.06 0.06

BCFG Butlers Red Oak 908W

AMGV 1132998

Born: 9/19/2009 Semen:\$ 35

Igenity

Ten	CWT
YGr	Fat
REA	Pct
Sta	Marb

EPDs 12/28/2013 AMF-NHF-CAF-OSF-DDF **Red Homo Polled**

- Red Oak sons and daughters are topping sales and shows across the country.

BFCK CHEROKEE CNYN 4912
 BUTLERS CHEROKEE 504T ET
 BUTLERS RUBY
 BUTLERS OLE HICKORY 359R
 BUTLERS ROSE 908T
 BUTLER ELECTRIC RED ROSE

Balancer 50%

CE BW WW YW MK TM CED ST YG CW REA MB FT CV FM
 14 -0.9 69 107 21 56 8 N/A-0.17 32 0.69 0.38 0.38 64.1941.14
 0.38 0.46 0.36 0.36 0.24 0.25 0.21 0.31 0.17 0.18 0.18

RTBG Mr Balanced 1407 BA 904W

AMGV 1140638

Born: 8/23/2009 Semen:\$ 18

Igenity

Ten	CWT
YGr	Fat
REA	Pct
Sta	Marb

EPDs 12/28/2013

Homo Black Double Polled

He had a birth weight of 72, an adjusted weaning weight of 716, an adjusted yearling weight of 1347 and yearling scrotal of 40cm. He is a fall born bull that grew extremely well through a fairly rough winter with very minimal supplement, while feeding on cornstalks alongside his dam. His genetics also proved that he could gain 4.00lbs/day from weaning through yearling, on very limited amounts of grain and all the green grass he could eat. His mother is a picture perfect New Design 1407 daughter who also carries breed leading genetics from Traveler 6807, GT Maximum and EXT.

BENNETT LANDMARK J377
 BENNETT ACCLAIM L336
 MISS BLACKJACK G243
 BON VIEW NEW DESIGN 1407
 PLATTEMERE QUEEN W 795
 PLATTEMERE QUEEN W 728

Balancer 63%

CE BW WW YW MK TM CED ST YG CW REA MB FT CV FM
 9 2.3 74 104 20 57 4 N/A-0.24 34 0.64 0.50 0.50 76.2035.68
 0.52 0.75 0.66 0.63 0.29 0.29 0.29 0.50 0.23 0.23 0.23

JCGR Bar GT Cross Fire500W ET

AMGV 1124574

Born: 7/25/2009 Semen:\$ 40

Igenity

Ten	10	CWT	
YGr	5	Fat	4
REA	4	Pct	5
Sta		Marb	5

EPDs 12/28/2013 AMF-NHF-CAF-OSF-DDF **Hetero Black Homo Polled**

\$42,500 top selling bull in the 2011 National Gelbvieh & Balancer Sale DNA tested homozygous for the Tenderness gene. Unbelievable beef in a low birth/super performance package with flawless phenotype.

BAR GT FLASHBACK 410M ET
 R COLLATERAL 2R
 BAR GT LONI 27N ET
 BT CROSSOVER 758N
 BAR GT CROSSOVER 166S
 2034L

Balancer 50%

CE BW WW YW MK TM CED ST YG CW REA MB FT CV FM
 9 -2.4 48 70 34 58 11 N/A-0.28 8 0.52 0.64 0.64 49.7320.82
 0.52 0.57 0.52 0.52 0.42 0.43 0.28 0.42 0.25 0.28 0.28

JOB Danell Turnabout 20W

AMGV 1109467

Born: 2/10/2009 Semen:\$ 25

Igenity

Ten	9	CWT	
YGr	6	Fat	5
REA	4	Pct	7
Sta	7	Marb	7

EPDs 12/28/2013 AMF-NHF-CAF **Homo Black Homo Polled**

- 83 lb BW. 745 lb WW . 1274 lb YW. 37 cm Yearling Scrotal. 6.7 Frame. Moderate framed, homozygous black, homozygous polled Balancer that offers out-cross genetics from Riverbend Mile High. Turnabout is a bull that is in the Top 4% for Marbling EPD, Top 20% for REA, Top 10% for Yield Grade, TOP 10% for FT and ultrasound shows his heifers averaged a 4.10 IMF with an outstanding rib fat ratio of 81.8 (.13) on heifers and a 3.90 IMF on his bull calves with a fat ratio of 89 (.22). Put this together with a 9 for Tenderness and he should be your choice for your carcass bull. Out of a female that had a perfect udder.

BON VIEW NEW DESIGN 1407
 RIVERBEND MILE HIGH 3718
 G A R PRECISION 1919
 DANELL MONTANA PROUD ET
 DANELL MEADOWLARK 9R
 BCC BIRDIE 24G

VRT Lazy TV Watchman W021

AMGV 1115408

Born: 1/31/2009 Semen:\$ 25

CE BW WW YW MK TM CED ST YG CW REA MB FT CV FM
 16 -3.0 80 117 36 76 5 N/A 0.11 34 0.32 0.90 0.90 113.40 43.04
 0.81 0.86 0.83 0.82 0.74 0.73 0.41 0.58 0.43 0.47 0.47

EPDs 12/28/2013 AMF-NHF-CAF-OSF-DDF **Homo Black Homo Polled**

-High Selling: The \$28,500 top selling Gelbvieh bull in the spring of 2010.-Feed Efficient: Posted a -.9 RFI with a 6.5 to 1 conversion.-Top Marbling: 116 IMF ration with a Low 82 lb BW, Maternal Strength: Dam is a first calf heifer. Granddam is a dam of Merit. Outcross: Scout, the sire, ranks in the top 1% of the Angus breed for IMF and has balanced EPDs

Balancer 50%**Igenity**

Ten	CWT
YGr	Fat
REA	Pct
Sta	Marb

WOODHILL ADMIRAL 77K
 DVA SCOUT 553
 D V A JUANADA 33

LAZY TV PETERBILT M491
 LAZY TV MS PETERBLT T309
 LAZY TV MS SEASON P540

CODH Starlights Jacquizz 270U

AMGV 1115519

Born: 6/18/2008 Semen:\$ 20

CE BW WW YW MK TM CED ST YG CW REA MB FT CV FM
 11 -0.9 62 81 25 56 8 N/A -0.22 16 0.31 -0.20 -0.20 -12.63 22.56
 0.34 0.38 0.33 0.32 0.27 0.27 0.14 0.27 0.11 0.11 0.11

EPDs 12/28/2013 AMF-NHF-CAF-OSF-DDF **Black Homo Polled**

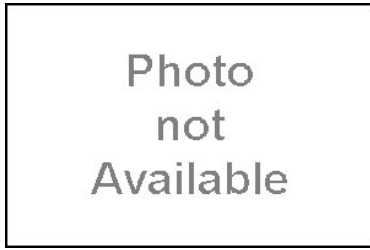
- Black, homozygous polled purebred sire that is producing awesome progeny.
 - Note his outstanding National Champion Division winning daughters photographed.
 - Jacquizz's pedigree features many of the breeds all-time great female maker sires.

Balancer 88%**Igenity**

Ten	CWT
YGr	Fat
REA	Pct
Sta	Marb

ECHO 575E
 STARLIGHTS TITAN 302L2
 3R PLD DELIAH 302D ET

EXTRA 2106K ET
 STARLIGHT'S MISS 203R
 STARLIGHT'S MISS 108N

CTR Good Night 879U

AMGV 1100045

Born: 5/12/2008 Semen:\$ 15

CE BW WW YW MK TM CED ST YG CW REA MB FT CV FM
 8 3.7 79 103 22 62 9 4 -0.11 35 0.29 0.22 0.22 44.47 31.81
 0.49 0.71 0.63 0.63 0.27 0.28 0.17 0.49 0.11 0.12 0.12

EPDs 12/28/2013 **Black Homo Polled****Balancer 50%****Igenity**

Ten	CWT
YGr	Fat
REA	Pct
Sta	Marb

ELLISON 608F
 GOOD NIGHT 4743P
 CTR SUSAN 2907

VERMILION DATELINE 7078
 2109M
 902J

EGL Northern Dancer U659

AMGV 1085889

Born: 3/22/2008 Semen:\$ 25

CE BW WW YW MK TM CED ST YG CW REA MB FT CV FM
 8 1.2 46 80 21 44 11 N/A 0.20 20 -0.17 0.74 0.74 75.42 30.53
 0.78 0.84 0.80 0.79 0.69 0.70 0.35 0.57 0.31 0.34 0.34

EPDs 12/28/2013 AMF-NHF-CAF-OSF **Black Polled****Balancer 25%****Igenity**

Ten	CWT
YGr	Fat
REA	Pct
Sta	Marb

G A R INTEGRITY
 LUDACRIS 039S ET
 G565

NORTHERN IMPROVEMENT 448
 EGL MISS IMPROV 2212
 EGL 9256

JCGR Bar GT Cobalt 159U

AMGV 1072115

Born: 2/10/2008 Semen:\$ 20

CE BW WW YW MK TM CED ST YG CW REA MB FT CV FM
 12 1.8 60 100 29 59 5 N/A -0.12 32 0.32 0.21 0.21 43.90 39.37
 0.60 0.70 0.63 0.62 0.47 0.47 0.17 0.49 0.12 0.10 0.10

EPDs 12/28/2013 AMF-NHF-CAF-OSF-DDF **Black Homo Polled**

*Power and mass best describes this 2011 Denver Division Champion.
 *He's wide based with that extra volume and muscle mass to produce the scale busters/sale toppers for your program. *Cobalt's gorgeous ET full sister sold for \$10,000 in the 2011 National Gelbvieh & Balancer Sale.

Balancer 63%**Igenity**

Ten	CWT
YGr	Fat
REA	Pct
Sta	Marb

BAR GT FLASHBACK 410M ET
 R COLLATERAL 2R
 BAR GT LONI 27N ET

BON VIEW NEW DESIGN 878
 MS PERRI B 2010R
 MS PERRI B 2166N

Balancer 50%

CE BW WW YW MK TM CED ST YG CW REA MB FT CV FM
 8 1.8 102 136 8 59 3 N/A -0.16 52 0.70 0.02 0.02 28.34 48.07
 0.59 0.78 0.71 0.67 0.41 0.41 0.31 0.52 0.29 0.33 0.33

DLW Red Power 583U

AMGV 1072061

Born: 2/4/2008 Semen: \$ 25

Igenity

Ten	CWT
YGr	Fat
REA	Pct
Sta	Marb

EPDs 12/28/2013

Red Multiple Polled

Red power is a basic, functional bull with mass that commercial cattlemen are seeking. Great disposition. Use Red Power to make gentle, moderate, easy fleshing females with milk in line for efficient, fertile momma cows. Igenity - Tenderness 4, Ribeye Area 4, Marbling 7, Yield Grade 6, Percent Choice 7, Fat Thickness 5, Stayability 5.

BFCK CHEROKEE CNYN 4912
 LCC GRAVITY B252L
 HXC 950J

MR VALHALLA 554J ET
 MS FINANCE 583R
 MS CONVERTER 006K

Balancer 50%

CE BW WW YW MK TM CED ST YG CW REA MB FT CV FM
 12 0.9 63 107 31 62 3 N/A -0.10 35 0.18 0.04 0.04 28.01 44.64
 0.50 0.63 0.56 0.55 0.31 0.32 0.28 0.44 0.24 0.26 0.26

JRI Enhancer 53U21

AMGV 1080057

Born: 1/28/2008 Semen: \$ 20

Igenity

Ten	4	CWT	
YGr	6	Fat	5
REA	5	Pct	7
Sta		Marb	7

EPDs 12/28/2013 AMF-NHF-CAF-OSF-DDF **Black Double Polled**

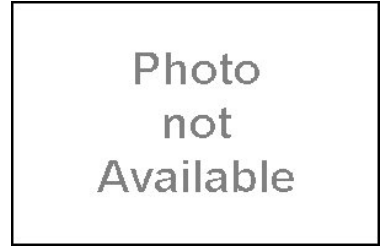
One beef packing machine, phenotypically flawless made, young Balancer sire. Incredible 1,491 pound yearling weight/ 43.2 centimeter yearling scrotal. 2009 National Champion Pen of 3 Balancer bull champion. Enhancer should produce the scale busters... homozygous polled DNA pending.

S S TRAVELER 6807 T510
 EGL SLEEP NIGHTS 2179
 EGL 9038

EXTRA EXPOSURE 285L71 ET
 MS SUGAR PLUM 53S71
 MS TOP SECRET 53P61

Balancer 50%

CE BW WW YW MK TM CED ST YG CW REA MB FT CV FM
 15 -1.9 64 95 32 64 10 N/A 0.07 23 -0.25 0.28 0.28 36.48 33.83
 0.56 0.68 0.62 0.61 0.41 0.41 0.38 0.48 0.42 0.45 0.45

CTR Front Page 765T

AMGV 1086273

Born: 5/4/2007 Semen: \$ 20

Igenity

Ten	CWT
YGr	Fat
REA	Pct
Sta	Marb

EPDs 12/28/2013

Black Double Polled

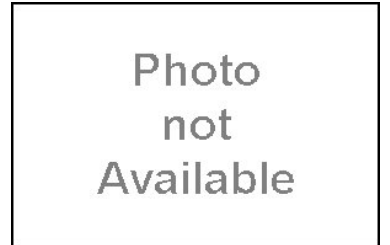
Popular balanced trait bull at the 2009 Cedar Top Ranch bull sale. Tremendous producing dam. 765T will add muscle, shape and correctness to progeny.

CONNEALY FOREFRONT
 CONNEALY FRONT PAGE 0228
 EBONY LIT OF CONANGA 840

POWERSTROKE G92
 TWILIGHT
 27H

Balancer 50%

CE BW WW YW MK TM CED ST YG CW REA MB FT CV FM
 11 0.6 66 98 21 54 7 6 -0.05 28 0.12 0.26 0.26 42.96 34.32
 0.37 0.44 0.38 0.39 0.24 0.25 0.18 0.32 0.14 0.15 0.15

CTR Good Night 728T

AMGV 1086575

Born: 4/5/2007 Semen: \$ 20

Igenity

Ten	CWT
YGr	Fat
REA	Pct
Sta	Marb

EPDs 12/28/2013

Homo Black Homo Polled

If you need moderation this is the bull. He is a truck. Admired by many commercial cattlemen seeking wide based genetics in a calving ease package. Elite cow family.

ELLISON 608F
 GOOD NIGHT 4743P
 CTR SUSAN 2907

TRAVELER 0907K
 HEROINE 5173R
 HEROINE 2130M

Balancer 50%

CE BW WW YW MK TM CED ST YG CW REA MB FT CV FM
 15 -1.5 63 92 15 47 11 5 -0.09 22 0.08 0.03 0.03 14.24 31.15
 0.83 0.89 0.85 0.85 0.75 0.75 0.33 0.59 0.27 0.31 0.31

CTR Good Night 715T

AMGV 1086538

Born: 3/29/2007 Semen: \$ 25

Igenity

Ten	6	CWT	
YGr	5	Fat	4
REA	5	Pct	6
Sta		Marb	6

EPDs 12/28/2013 AMF-NHF-CAF-OSF-DDF **Homo Black Homo Polled**

Topped the 2009 Cedar Top Ranch bull sale at \$9,800.00. A proven, time tested cow family. Generations stacked for elite females with do ability, volume, femininity and super udders. A bull that covers all bases. Igenity scores: Tenderness 6, Fat Thickness 4, Yield Grade 5, Ribeye Area 6, Avg. Daily Gain 6, Percent Choice 6, Marbling Score 6. Owned by Cedar Top Ranch and Warner Beef Genetics

ELLISON 608F
 GOOD NIGHT 4743P
 CTR SUSAN 2907

SITZ ALLIANCE 6595
 POLL STAR 5160E
 028K

VRT Lazy TV Old School T231

AMGV 1039590

Born: 3/10/2007 Semen:\$ 30

CE BW WW YW MK TM CED ST YG CW REA MB FT CV FM
 10 1.2 70 102 26 61 7 7 -0.18 32 0.46 -0.11 -0.11 12.52 35.91
 0.67 0.76 0.71 0.70 0.56 0.56 0.16 0.30 0.53 0.25 0.27 0.27

EPDs 12/28/2013

Red Polled

Old School is one of the most complete red Balancer bulls I've seen. Exceptional depth of rib, heavy muscled in a package that moves phenomenally. His dam, with 6 calves, posts a BW ratio of 98, WW ratio of 106 and YW ratio of 103. He is currently being retested with Igenity.

Balancer 50%**Igenity**

Ten	CWT
YGr	Fat
REA	Pct
Sta	Marb

LAZY TV CLASSIC M358
 LAZY TV SECOND CLASS R87
 LAZY TV MS DYNAMICS L354

BUF CRK CHF 824-1658
 K318
 LAZY TV C181

MLH Levi S151 ET

AMGV 1012949

Born: 10/22/2006 Semen:\$ 20

CE BW WW YW MK TM CED ST YG CW REA MB FT CV FM
 8 0.9 66 101 12 45 9 4 0.01 31 0.19 0.43 0.43 62.96 37.47
 0.73 0.78 0.73 0.73 0.67 0.67 0.03 0.25 0.54 0.22 0.22 0.22

EPDs 12/28/2013

AMF

Homo Black Homo Polled

Cow power plus genetics featuring super donor MLH Miss Goldrush F42. Outstanding individual low birth to super growth spread... 76 BW/811 WW. Impressive phenotype with unmatched genotype. The total package with superior carcass DNA.

Balancer 50%**Igenity**

Ten	CWT
YGr	Fat
REA	Pct
Sta	Marb

TWIN VALLEY PRECISION E161
 BR MIDLAND
 BR ROYAL LASS 7036-19

POLLED MIDNIGHT
 MISS GOLDRUSH F42
 114A

CTR Sandman 6523S

AMGV 1030628

Born: 4/18/2006 Semen:\$ 25

CE BW WW YW MK TM CED ST YG CW REA MB FT CV FM
 10 1.8 71 100 9 44 6 6 -0.16 31 0.81 0.38 0.38 63.51 33.96
 0.83 0.88 0.85 0.85 0.78 0.78 0.07 0.34 0.59 0.30 0.34 0.34

EPDs 12/28/2013

AMF-NHF-CAF-OSF-DDF

Black Homo Polled

Without a doubt, the most impressive Balancer bull you'll see. Everyone who sees Sandman immediately calls about semen. Time tested proven cow family. Dam CTR198L has produced three sale toppers for Cedar Top Ranch. A son, Lot#77 in the 2012 bull sale topped the sale at \$42,000.

Balancer 50%**Igenity**

Ten	CWT
YGr	Fat
REA	Pct
Sta	Marb

VERMILION DATELINE 7078
 SITZ TRADITION RLS 8702
 R L S EISA EVERGREEN 5018

CAROLINA CPR
 198L
 CEDAR TOP'S 344C

EBY Western Hauler 028S

AMGV 1007861

Born: 4/5/2006 Semen:\$ 25

CE BW WW YW MK TM CED ST YG CW REA MB FT CV FM
 10 -0.2 65 109 33 66 5 1 -0.19 35 0.65 0.13 0.13 41.29 44.82
 0.78 0.83 0.78 0.78 0.70 0.70 0.04 0.35 0.57 0.33 0.36 0.36

EPDs 12/28/2013

AMF-NHF-CAF-OSF-DDF

Homo Black Homo Polled

2008 National Champion Balancer Bull at the Denver Stock Show. Pedigree features breed-leading Gelbvieh and Angus genetics. Incredible fleshing ability, depth and muscle shape in a moderate framed flawless made package. His excellent testicular development spells fertility plus sons and daughters.

Balancer 50%**Igenity**

Ten	CWT
YGr	Fat
REA	Pct
Sta	Marb

EXTRA EXPOSURE 285L71 ET
 GREAT WESTERN 254N68 ET
 MS P BLACKBERRY 254K55ET

RITO 616 OF 4B20 6807
 LYONS DELIA BEAUTY 2028
 LYONS DELIA BEAUTY 0301

EGL Old Iron Nuts S842

AMGV 1005445

Born: 3/13/2006 Semen:\$ 20

CE BW WW YW MK TM CED ST YG CW REA MB FT CV FM
 6 2.4 47 64 8 32 6 6 -0.39 11 0.76 0.11 0.11 11.58 16.27
 0.76 0.81 0.77 0.77 0.69 0.69 0.16 0.32 0.56 0.29 0.32 0.32

EPDs 12/28/2013

Homo Black Homo Polled**Balancer 50%****Igenity**

Ten	CWT
YGr	Fat
REA	Pct
Sta	Marb

NORTHERN EXPOSURE J171
 NORTHERN WIND P068 ET
 OLIVIA J811 ET

NORTHERN IMPROVEMENT 448
 EGL MISS IMPROVEMENT 3266
 EGL 0306

Balancer 50%

CE BW WW YW MK TM CED ST YG CW REA MB FT CV FM

10 1.4 74 118 18 55 13 2 -0.30 42 1.15 0.23 0.23 59.3248.15

0.76 0.79 0.77 0.76 0.71 0.71 0.05 0.34 0.56 0.31 0.33 0.33

EPDs 12/28/2013 AMF-NHF-CAF-NR-DDF **Black Double Polled****DLW Stout 695S ET****Igenity**

Ten	CWT
YGr	Fat
REA	Pct
Sta	Marb



AMGV 996570

Born: 2/5/2006 Semen:\$ 15

LEACHMAN RIGHT TIME
HYLINE RIGHT TIME 338
HYLINE PRIDE 265HIGHLAND HERO 511E
MS HERO 8862H
MISS CAMI 01F**Balancer 50%**

CE BW WW YW MK TM CED ST YG CW REA MB FT CV FM

13 -1.3 40 70 29 49 10 3 -0.14 10 0.36 0.07 0.07 5.73 25.69

0.77 0.80 0.78 0.78 0.71 0.72 0.03 0.40 0.56 0.43 0.47 0.47

EPDs 12/28/2013 AMF-NHF-CAF-OSF-DDF **Homo Black Homo Polled****MLH Goldrush Standard****Igenity**

Ten	CWT
YGr	Fat
REA	Pct
Sta	Marb



AMGV 982519

Born: 1/17/2006 Semen:\$ 20

G A R PRECISION 1680
G A R US PREMIUM BEEF
G A R EXT 2928ATLAS 712G
MISS GOLDRUSH P11
MISS GOLDRUSH M75Five star DNA... homozygous for 2 of the 3 tenderness genes.
Incredible individual birth to growth spread... 73# birth weight/834# 205
day weight off first calf heifer. Cowman balanced EPD strength
featuring top 4% low birth, top 20% weaning weight, top 10% yearling
weight, top 30% total maternal and top 5% feedlot merit. Beef plus
genetics featuring proven carcass merit on both sides of the pedigree.**Balancer 50%**

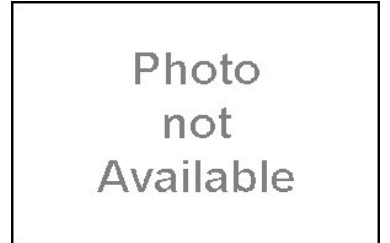
CE BW WW YW MK TM CED ST YG CW REA MB FT CV FM

9 1.7 59 93 34 63 6 7 0.18 28 0.06 0.32 0.32 47.7034.24

0.72 0.78 0.74 0.74 0.64 0.65 0.04 0.28 0.55 0.24 0.26 0.26

EPDs 12/28/2013 **Black Double Polled****CTR About Time 5548R****Igenity**

Ten	CWT
YGr	Fat
REA	Pct
Sta	Marb



AMGV 971415

Born: 4/24/2005 Semen:\$ 20

SITZ TRAVELER 8180
SITZ ALLIANCE 6595
SITZ BARBARAMERE JET 2698CAROLINA CPR
198L
CEDAR TOP'S 344CMaternal brother to CTR Sandman 6523S but with more maternal.
Great cow family with flawless dam. 198L has produced three sale
toppers for Cedar Top Ranch. 5548 will add length, fix dispositions and
structural problems.**Balancer 50%**

CE BW WW YW MK TM CED ST YG CW REA MB FT CV FM

17 -3.2 74 112 34 71 10 5 -0.17 31 0.71 -0.05 -0.05 21.4042.56

0.81 0.84 0.81 0.81 0.75 0.75 0.32 0.38 0.58 0.38 0.42 0.42

EPDs 12/28/2013 AMF-NHF-CAF-OSF **Red Homo Polled****KRT Lazy TV Second Class R87****Igenity**

Ten	CWT
YGr	Fat
REA	Pct
Sta	Marb



AMGV 947498

Born: 2/23/2005 Semen:\$ 25

BFCK CHEROKEE CNYN 4912
LAZY TV CLASSIC M358
K497BUF CRK DYNAMICS 3820
LAZY TV MS DYNAMICS L354
LAZY TV J347Sire to Lazy TV Old School and 2009 Reserve Champion BHSS
Gelbvieh Bull. 71 calves indexed 96 BW, 101 WW, 101 YW. Owned by
Schafer Farms, Goodhue, MN, and Thorstenson Gelbvieh & Angus,
Selby, SD.**Balancer 50%**

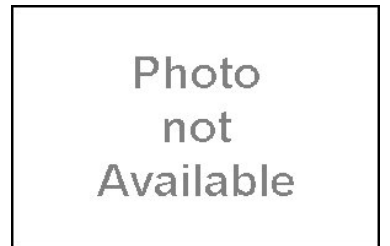
CE BW WW YW MK TM CED ST YG CW REA MB FT CV FM

18 -1.4 60 88 23 53 11 N/A 0.00 20 0.08 0.25 0.25 32.0329.80

0.52 0.63 0.56 0.55 0.34 0.35 0.16 0.44 0.11 0.11 0.11

EPDs 12/28/2013 **Black Polled****CTR Momma Maker 4761P****Igenity**

Ten	CWT
YGr	Fat
REA	Pct
Sta	Marb



AMGV 921319

Born: 4/27/2004 Semen:\$ 15

BLACK TIE 123A
ELLISON 608F
D7SITZ ALLIANCE 6595
CTR PRIMROSE 2917
C T R PRIMROSE C389Maternal brother to CTR Sandman 6523S but with more maternal.
Great cow family with flawless dam. 198L has produced three sale
toppers for Cedar Top Ranch. 5548 will add length, fix dispositions and
structural problems.

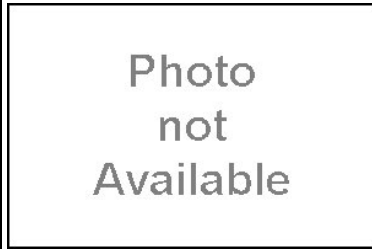
CTR Good Night 4743P

Photo
not
Available

AMGV 921198
Born: 4/12/2004 Semen:\$ 30

CE BW WW YW MK TM CED ST YG CW REA MB FT CV FM
10 2.9 75 113 24 62 8 1 0.03 41 0.03 0.26 0.26 49.89 42.99
0.83 0.85 0.83 0.83 0.79 0.79 0.32 0.35 0.58 0.34 0.37 0.37

EPDs 12/28/2013

Black Homo Polled

Balancer 50%**Igenity**

Ten	CWT
YGr	Fat
REA	Pct
Sta	Marb

BLACK TIE 123A
ELLISON 608F
D7

O C C ANCHOR 771A
CTR SUSAN 2907
K BAR E SUSAN H K O D 98

TAU Mr Krugerrand 70M 130P

AMGV 904079
Born: 2/20/2004 Semen:\$ 20

CE BW WW YW MK TM CED ST YG CW REA MB FT CV FM
8 0.3 75 113 28 66 6 5 0.01 37 0.15 0.14 0.14 37.65 42.84
0.89 0.91 0.89 0.89 0.86 0.86 0.30 0.37 0.60 0.35 0.39 0.39

EPDs 12/28/2013 AMF-NHF-CAF-OSF-DDF Homo Black Homo Polled

Homozygous black, homozygous polled meat machine with flawless phenotype. Krugerrand is really adding mass, depth and soundness of structure to his progeny. Note Krugerrand's excellent widespread low birth to superb growth ratios in his progeny report. Powerful cow family with Krugerrands dam sporting a calving ease 95 BW ratio, 108 WW ratio, and a 110 YW ratio.

Balancer 50%**Igenity**

Ten	6	CWT	
YGr	5	Fat	
REA	7	Pct	6
Sta	9	Marb	6

KRUGERRAND OF DONAMERE
TAU KRUGERRAND 70M
T G A PROMPTER 6807 557E

COCOA 35C
MS COCO 052KA 437D
437D

MLH F2 Trademark P3

AMGV 891351
Born: 1/18/2004 Semen:\$ 8

CE BW WW YW MK TM CED ST YG CW REA MB FT CV FM
13 0.1 73 106 16 52 11 9 -0.19 32 0.45 0.16 0.16 39.50 37.67
0.57 0.66 0.60 0.59 0.41 0.42 0.20 0.26 0.47 0.20 0.23 0.23

EPDs 12/28/2013 AMF-NHF-CAF-OSF-DDF Homo Black Homo Polled

-Trademark combines low birth with exceptional growth and carcass merit. Sired by Carolina Balancer, Trademark is one of the first F2 Balancers available through AI - making his genetics more predictable. Trademark's Goldrush Visa J40 dam brings breed-leading carcass genetics to the mix. Trademark topped the 2004 Goldrush Genetics sale. Add his trademark genetic package to your program today!

Balancer 50%**Igenity**

Ten	CWT
YGr	Fat
REA	Pct
Sta	Marb

FLYING H EXTRA 150D
CAROLINA BALANCER 2477J
J BOB 1467

GOLDRUSH VISA J40
MISS GOLDRUSH M76
MISS GOLDRUSH G103

MCFG MCF Bruce Almighty 35PE

AMGV 899675
Born: 1/8/2004 Semen:\$ 20

CE BW WW YW MK TM CED ST YG CW REA MB FT CV FM
11 1.0 78 111 30 69 13 3 -0.39 36 0.86 -0.16 -0.16 13.42 39.33
0.82 0.85 0.82 0.82 0.79 0.79 0.19 0.35 0.58 0.31 0.34 0.34

EPDs 12/28/2013

Homo Black Homo Polled

2004 Popular NAILE Grand Champion, Billings, MT. Ten bull calves on 2007 Midland test are all above the group average! The only true outcross HP/HB Balancer bull on the market with proven sire and dam credentials. 77 lb is the average birth weight on 1st calf heifers.

Balancer 75%**Igenity**

Ten	CWT
YGr	Fat
REA	Pct
Sta	Marb

R D R 1531 AMBUSH 1807
LAZY TV BEETHOVEN K278
LAZY TV H406

BUD 11G
41K ET
CEDAR TOP'S TIFFANY

JBOB Carolina 5003N ET

AMGV 880418
Born: 8/22/2003 Semen:\$ 20

CE BW WW YW MK TM CED ST YG CW REA MB FT CV FM
4 1.6 90 130 31 76 8 1 -0.13 49 0.86 -0.02 -0.02 28.26 49.92
0.81 0.83 0.81 0.81 0.78 0.78 0.15 0.33 0.58 0.29 0.30 0.30

EPDs 12/28/2013

AMF-NHF-CAF-OSF-DDF Homo Black Homo Polled

Carolina 5003N is a great Balancer bull sired by the great Bushwacker bull who adds depth, fleshing ability and good carcass merit to his progeny. Bushwacker daughters are some of the best females around. The mating with this great JBOB Echo daughter produced a great one. Bushwacker with Echo puts the top genetics together making for great females less frame and a very attractive package.

Balancer 50%**Igenity**

Ten	CWT
YGr	Fat
REA	Pct
Sta	Marb

PARAMONT AMBUSH 2172
B C C BUSHWACKER 41-93
R C ANITA T BANDO 918903

ECHO 575E
3298K
MISS 92C

Balancer 50%

CE BW WW YW MK TM CED ST YG CW REA MB FT CV FM
 8 2.1 66 100 35 68 -2 2 -0.19 32 0.78 0.24 0.24 50.7536.54
 0.72 0.79 0.75 0.74 0.63 0.63 0.27 0.31 0.55 0.28 0.30 0.30

EPDs 12/28/2013

Red Homo Polled

3715 was the top bull in the 03 calf crop. A planned mating of one of the most proven cow lines in the Gelbvieh breed with almost perfect carcass and feedlot data. The sire is also the same on the Red Angus side of the equation with more data yet. Buy the sons with confidence if you sell cattle on a grid or you feed out your cattle in a feedlot. Considered a top sire for ERT's (Economic Relevant Traits).

CTR Tomahawk 3715N

AMGV 887864

Born: 3/27/2003 Semen:\$ 20

Igenity

Ten	CWT
YGr	Fat
REA	Pct
Sta	Marb

BUF CRK CHF 824-1658
 BFCK CHEROKEE CNYN 4912
 MRM 1431 8611 9109

BLACK DIAMOND 96C
 527E
 T124

Balancer 50%

CE BW WW YW MK TM CED ST YG CW REA MB FT CV FM
 19 -4.9 49 81 10 34 1 -2 0.00 11 -0.31 -0.03 -0.03 -7.16 29.88
 0.81 0.83 0.81 0.81 0.76 0.76 0.44 0.36 0.58 0.34 0.37 0.37

EPDs 12/28/2013 AMF-NHF-CAF-OSF-DDF **Diluter Free Homo Polled**

This homozygous polled, diluter free Balancer bull has really developed into one powerful individual. Profit Agent ranks among the breed leaders for low birth and his sons and daughters feature unbelievable depth of rib and fleshing ease.

JRI Profit Agent 46N

AMGV 852366

Born: 3/6/2003 Semen:\$ 20

Igenity

Ten	CWT
YGr	Fat
REA	Pct
Sta	Marb

FREEDOM 178F ET
 PLD FREE AGENT 125J3
 MS PLD GRAND PRIX 125G3

GLACIER LOGAN 210
 LACY MISS LOGAN 46G
 LACY ANNA HW 16E

Balancer 50%

CE BW WW YW MK TM CED ST YG CW REA MB FT CV FM
 12 -0.1 64 108 28 60 8 -2 0.14 34 -0.23 0.51 0.51 70.8045.41
 0.88 0.90 0.88 0.88 0.85 0.85 0.39 0.48 0.60 0.57 0.53 0.53

EPDs 12/28/2013 CAF-DDF **Homo Black Hetero Polled**

Large spread birth to growth. A balancer with good from both worlds. 1/2 interest sold for \$21,000 through the Seedstock Plus Program.

BTBR Mr Black Cross 3002N ET

AMGV 848137

Born: 2/8/2003 Semen:\$ 18

Igenity

Ten	CWT
YGr	Fat
REA	Pct
Sta	Marb

B/R NEW DESIGN 036
 BON VIEW NEW DESIGN 1407
 BON VIEW PRIDE 664

CK BRONCO 411G
 MS DOLLY 1211L
 MS BLACK CROSS 4116D

Balancer 50%

CE BW WW YW MK TM CED ST YG CW REA MB FT CV FM
 6 1.1 66 97 27 60 11 1 -0.02 29 0.06 -0.05 -0.05 12.4133.42
 0.83 0.86 0.84 0.84 0.80 0.80 0.27 0.47 0.59 0.54 0.57 0.57

EPDs 12/28/2013 AMF-NHF-CAF-OSF-DDF **Homo Black Homo Polled**

4665M is an awesome 1/2 blood Balancer out of Angus maternal phenom, Right Time, who's one of the best udder and flesh improvers in the breed. Expect the best of both worlds when you sample 4665M this year.

JBOB J-Bob 4665M ET

AMGV 840675

Born: 11/28/2002 Semen:\$ 25

Igenity

Ten	CWT
YGr	Fat
REA	Pct
Sta	Marb

N BAR EMULATION EXT
 LEACHMAN RIGHT TIME
 LEACHMAN ERICA 0025

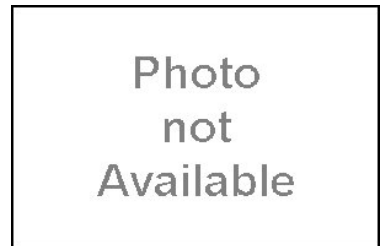
ECHO 575E
 2409J ET
 MISS 92C

Balancer 50%

CE BW WW YW MK TM CED ST YG CW REA MB FT CV FM
 10 -1.0 73 125 22 58 12 -1 -0.05 43 0.22 0.59 0.59 88.9355.41
 0.80 0.84 0.81 0.80 0.74 0.74 0.27 0.32 0.57 0.28 0.31 0.31

EPDs 12/28/2013 **Homo Black Homo Polled**

Low birth coupled with scale crushing weaning and yearling weights. He sires long, loose, free moving big rough country covering bulls and females that are moderate at first calf with incredible udders. 2401 stems from a Dam of distinction cow family that never misses. Use this bull if balanced traits from birth to yearling are what you need. No other proven Balancer bull can put this EPD tabulation together. A no miss calving ease bull used for years on virgin heifers.

CTR Marbling 2401M

AMGV 825867

Born: 3/1/2002 Semen:\$ 15

Igenity

Ten	CWT
YGr	Fat
REA	Pct
Sta	Marb

D H D TRAVELER 6807
 S S TRAVELER 6807 T510
 S S MISS HI SPADE A114

CAROLINA CPR
 012K
 CEDAR TOP'S 3019C

JBOB Carolina Master 4231M ET

AMGV 806972

Born: 1/21/2002 Semen:\$ 50

CE BW WW YW MK TM CED ST YG CW REA MB FT CV FM
 16 0.5 58 83 40 69 10 8 -0.40 20 1.06 0.25 0.25 40.63 26.99
 0.84 0.86 0.85 0.85 0.80 0.80 0.36 0.50 0.59 0.60 0.28 0.28

EPDs 12/28/2013 AMF-NHF-CAF-OSF **Homo Black Homo Polled**

Progeny Proven with 78 calves ratioing 100% at birth, 102% at weaning and 102% at yearling

Balancer 50%**Igenity**

Ten	CWT
YGr	Fat
REA	Pct
Sta	Marb

PAPA OPTIMA 9818
 PAPA FORTE 1921
 PAPA ENVIOUS BLACKBIRD 883

ECHO 575E
 2417J ET
 MISS 92C

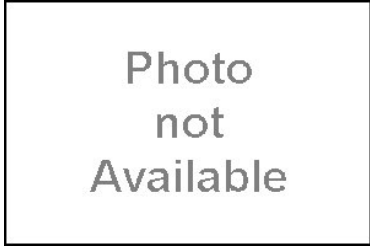
JBOB Apache Warrior GC ET

Photo not Available

AMGV 806965

Born: 1/16/2002 Semen:\$ 20

CE BW WW YW MK TM CED ST YG CW REA MB FT CV FM
 18 -1.6 48 68 23 47 10 0 -0.30 7 0.72 0.14 0.14 8.64 19.20
 0.76 0.80 0.77 0.77 0.72 0.71 0.10 0.32 0.56 0.28 0.29 0.29

EPDs 12/28/2013 **Black Polled**

You can build superior bulls and females here. With proven Angus genetics and the famous Echo makes this a consistent package of attractive progeny.

Balancer 50%**Igenity**

Ten	CWT
YGr	Fat
REA	Pct
Sta	Marb

PAPA OPTIMA 9818
 PAPA FORTE 1921
 PAPA ENVIOUS BLACKBIRD 883

ECHO 575E
 2417J ET
 MISS 92C

Buck 's Carolina Rock'n 251L

AMGV 794476

Born: 11/25/2001 Semen:\$ 18

CE BW WW YW MK TM CED ST YG CW REA MB FT CV FM
 18 -1.4 62 85 26 57 9 4 -0.43 18 0.83 0.23 0.23 33.50 26.11
 0.79 0.84 0.81 0.80 0.74 0.73 0.33 0.47 0.57 0.57 0.60 0.60

EPDs 12/28/2013 CAF **Homo Black Homo Polled**

Look at the low birth EPD and a pedigree for great females.

Balancer 50%**Igenity**

Ten	CWT
YGr	Fat
REA	Pct
Sta	Marb

PARAMONT AMBUSH 2172
 ROCKN D AMBUSH 1531
 MS BLACKCAP BAND OF R D 13

ECHO 575E
 2417J ET
 MISS 92C

CTR Traveler 0907K

AMGV 721347

Born: 3/10/2000 Semen:\$ 20

CE BW WW YW MK TM CED ST YG CW REA MB FT CV FM
 6 3.3 78 103 5 44 1 12 0.13 35 -0.20 0.48 0.48 65.56 32.31
 0.87 0.89 0.87 0.87 0.85 0.85 0.61 0.38 0.60 0.37 0.40 0.40

EPDs 12/28/2013 **Homo Black Homo Polled**

Transmits, muscling, capacity, fleshing ability at the highest level. Nicknamed "Muscle" for his powerful phenotype. Simply, the most powerful Gelbvieh and/or Balancer bull. Words are not sufficient to describe the cattle. "Muscle" will be around for years to come and a household name among commercial producers wanting Balancers. 0907K cattle excel like no other on IMF scans.

Balancer 50%**Igenity**

Ten	CWT
YGr	Fat
REA	Pct
Sta	Marb

D H D TRAVELER 6807
 G D A R TRAVELER 011
 G D A R PRIMROSE LADY 8209

BLACK HUSKER
 CTR 414D
 MISS JAY'S BLACK JACKIE

VRT Lazy TV Beethoven K278

AMGV 715274

Born: 2/24/2000 Semen:\$ 20

CE BW WW YW MK TM CED ST YG CW REA MB FT CV FM
 14 0.8 51 75 30 56 14 3 -0.40 16 0.71 0.32 0.32 37.70 23.57
 0.87 0.89 0.88 0.87 0.85 0.85 0.65 0.47 0.60 0.53 0.56 0.56

EPDs 12/28/2013 AMF-NHF-CAF-OSF-DDF **Homo Black Polled****Balancer 50%****Igenity**

Ten	CWT
YGr	Fat
REA	Pct
Sta	Marb

ROCKN D AMBUSH 1531
 R D R 1531 AMBUSH 1807
 MISS BLACKCAP OF R D 1635

METTLER'S BLACK TORCH
 LAZY TV H406
 LAZY TV D190

Red PB

CE BW WW YW MK TM CED ST YG CW REA MB FT CV FM
 12 0.2 64 83 26 58 6 4 -0.27 19 0.43 -0.31 -0.31 -18.2023.45
 0.30 0.32 0.29 0.28 0.25 0.25 | 0.12 0.24 0.09 0.10 0.10

HFGC Hart Star 35Y43**Igenity**

Ten CWT
 YGr Fat
 REA Pct
 Sta Marb

EPDs 12/28/2013

Red Homo Polled

Pictured at 27 months old. Purchased from Hart Farms.
 He is a homo polled full brother to HFGC Hart 35W34 2010 American Royal Grand Champion Gelbvieh Bull and 2011 Reserve Grand Champion Gelbvieh Bull. He is long and thick and is a difference maker for really good thick calves.

AMGV 1195833

Born: 11/4/2011 Semen: \$ 20

FREEDOM 178F ET
 HF ROSCOE 34P59 ET
 MS PLD HART'S RUBY

GIP EXTRA HOT P60
 LILLY LANGTRY 35S86
 MS PLD SUMMIT 35D6

Red PB

CE BW WW YW MK TM CED ST YG CW REA MB FT CV FM
 15 -2.4 46 65 20 43 6 0 -0.21 5 0.06 -0.41 -0.41 -45.9918.62
 0.38 0.43 0.35 0.34 0.28 0.29 | 0.20 0.29 0.20 0.20 0.20

JRI Top Secret 2 ETN**Igenity**

Ten CWT
 YGr Fat
 REA Pct
 Sta Marb

EPDs 12/28/2013 AMF-NHF-CAF-OSF-DDF **Red Homo Polled**

- Homozygous polled purebred JRI Top Secret 253M75 ET clone.
 - 353 JRI Top Secret 253M75 ET sons have averaged \$4,570 (gross \$1,613,191) in the annual Judd Ranch Bull Sales.
 - 46 sons out of JRI Top Secret 253M75 ET daughters averaged \$5,580 in the 2012 Judd Ranch Bull Sales.
 - JRI Top Secret 253M75 ET was one of the greatest "all around" sires in the breed and this Top Secret clone should follow in his footsteps.

AMGV 1221769

Born: 4/20/2011 Semen: \$ 25

FREEDOM 178F ET
 PLD FREE AGENT 125J3
 MS PLD GRAND PRIX 125G3

FREEDOM 178F ET
 MS PLD FRONTIER 253J60
 MS PLD SHAKER 253E51 ET

Red PB

CE BW WW YW MK TM CED ST YG CW REA MB FT CV FM
 11 -1.3 55 86 27 55 1 N/A -0.24 19 0.41 -0.21 -0.21 -7.43 30.52
 0.32 0.34 0.31 0.32 0.24 0.24 | 0.14 0.27 0.11 0.11 0.11

JRI John Wayne 165Y8**Igenity**

Ten CWT
 YGr Fat
 REA Pct
 Sta Marb

EPDs 12/28/2013 AMF-NHF-CAF-OSF-DDF **Red Homo Polled**

- Low birth, super growth genetics with tremendous testicular development.
 - John Wayne's calf raising machine, fertility plus dam features widespread birth to growth stats with her calves averaging 80 pounds at birth with a super 717 pound 205 day weight growth spread.
 - Diluter Free.

AMGV 1188538

Born: 2/6/2011 Semen: \$ 20

TOP SECRET 253M75 ET
 POP A TOP 197T83
 MS RED DAWN 197R72

TOP SECRET 253M75 ET
 MS PEBBLES 165T7
 MS PLD GRAND STAKE 165K6

Red PB

CE BW WW YW MK TM CED ST YG CW REA MB FT CV FM
 15 -1.3 58 86 21 49 5 9 -0.19 19 0.33 -0.22 -0.22 -9.69 29.04
 0.36 0.43 0.34 0.35 0.24 0.25 | 0.16 0.30 0.13 0.14 0.14

JRI Cartwright 140X75**Igenity**

Ten CWT
 YGr Fat
 REA Pct
 Sta Marb

EPDs 12/28/2013 AMF-NHF-CAF-OSF-DDF **Red Homo Polled**

- Top selling bull in the Judd Ranch 2012 Bull Sale. Diluter Free.
 - Incredible 926 pound weaning weight off his picture perfect teat/udder dam.
 - Stats on Cartwright's fertility plus dams calves: 79# avg. birth weight, 751# 205 day weight, 930# avg. weaning weight, 1234# avg. yearling weight on sons.
 - One of the most structurally correct individuals you will find in any breed with a tremendous hip and rump structure.

AMGV 1178927

Born: 8/21/2010 Semen: \$ 25

PLD FREE AGENT 125J3
 TOP SECRET 253M75 ET
 MS PLD FRONTIER 253J60

EXTRA EXPOSURE 285L71 ET
 EXTRA SASSY 140S65
 MS LAURA ASHLEY 140P54

Red PB

CE BW WW YW MK TM CED ST YG CW REA MB FT CV FM
 8 0.8 64 93 32 65 6 6 -0.24 26 0.75 0.09 0.09 30.21 31.65
 0.32 0.34 0.31 0.32 0.24 0.24 | 0.20 0.27 0.16 0.18 0.18

BNC X1205**Igenity**

Ten CWT
 YGr Fat
 REA Pct
 Sta Marb

EPDs 12/28/2013 CAF **Red Homo Polled**

This young sire scanned an impressive 6.2 IMF and a 16.7 REA. He is double polled, diluter free and an outcross for most red Gelbvieh genetics. Has great length of body and thickness and could prove to be the carcass bull of choice for Gelbvieh breeders looking for red genetics

AMGV 1158555

Born: 5/2/2010 Semen: \$ 20

BUD K12
 STALONE
 91K

BUD K12
 S75
 M54

BEA Passion 001X ET

AMGV 1149225

Born: 2/23/2010 Semen:\$ 25

CE BW WW YW MK TM CED ST YG CW REA MB FT CV FM
 8 4.1 83 123 29 70 7 6 -0.24 48 0.58 -0.07 -0.07 19.88 46.96
 0.54 0.77 0.68 0.63 0.29 0.30 | 0.29 0.50 0.24 0.26 0.26

EPDs 12/28/2013 AMF-NHF-CAF-OSF-DDF **Red Homo Polled**

- 2011 National Champion Gelbvieh Bull/2011 Breeder's Choice Gelbvieh Futurity Champion Bull.
- Passion is producing excellent structural correctness with an abundance of substance and volume.
- Sired by the national champion Collateral and Passions dam is one powerful, high volumed female that is loaded with femininity.

Red PB**Igenity**

Ten	6	CWT	3
YGr	4	Fat	3
REA	4	Pct	3
Sta		Marb	3

BAR GT FLASHBACK 410M ET
 R COLLATERAL 2R
 BAR GT LONI 27N ET

SILVERADO
 ELLA ET
 2217N ET

SSMK Astroid

AMGV 1142684

Born: 1/2/2010 Semen:\$ 20

CE BW WW YW MK TM CED ST YG CW REA MB FT CV FM
 6 3.0 69 101 27 61 8 4 -0.09 34 0.23 -0.23 -0.23 -0.90 35.19
 0.37 0.44 0.28 0.27 0.24 0.25 | 0.12 0.25 0.09 0.10 0.10

EPDs 12/28/2013 AMF-NHF-CAF-OSF-DDF **Red Homo Polled**

- Grand Champion Bull at the 2010 North American International Livestock Expo in Louisville.
- Excellent low birth to growth spread from one powerful cow family.
- Powerful genetics on both sides of his pedigree.

Red PB**Igenity**

Ten	3	CWT	4
YGr	7	Fat	5
REA	4	Pct	5
Sta		Marb	5

ROLEX 151M
 ASTRO 407S
 PRINCESS OF ALOT 407P

FREEDOM 178F ET
 MS FRIXIE
 TRIXIE

HFGC Hart 35W34

AMGV 1120038

Born: 10/28/2009 Semen:\$ 20

CE BW WW YW MK TM CED ST YG CW REA MB FT CV FM
 11 1.7 58 75 27 56 6 4 -0.28 17 0.43 -0.31 -0.31 -20.66 20.29
 0.51 0.63 0.52 0.45 0.26 0.27 | 0.14 0.39 0.09 0.10 0.10

EPDs 12/28/2013 **Red Homo Polled**

- *2011 American Royal Reserve Grand Purebred Gelbvieh Bull. *Super combo of calving ease, beef and carcass value. *Awesome cow family backed with multi-generations of honored Dam of Merit/Dam of Distinction females.

Red PB**Igenity**

Ten	4	CWT	7
YGr	7	Fat	6
REA	3	Pct	6
Sta		Marb	6

FREEDOM 178F ET
 HF ROSCOE 34P59 ET
 MS PLD HART'S RUBY

GIP EXTRA HOT P60
 LILLY LANGTRY 35S86
 MS PLD SUMMIT 35D6

JRI Trump 270W13B

AMGV 1142274

Born: 8/27/2009 Semen:\$ 25

CE BW WW YW MK TM CED ST YG CW REA MB FT CV FM
 15 0.2 59 83 27 56 6 1 -0.18 19 0.25 -0.24 -0.24 -12.46 25.91
 0.48 0.65 0.56 0.51 0.26 0.27 | 0.24 0.42 0.21 0.23 0.23

EPDs 12/28/2013 AMF-NHF-CAF-OSF-DDF **Red Homo Polled**

- 2012 Reserve National Champion Bull. Diluter Free.
- Unbelievable beef and extension in one complete package.
- Tremendous feet and leg structure.
- Powerful Judd Ranch cow family loaded with fertility, maternal strength and teat/udder excellence.

Red PB**Igenity**

Ten	4	CWT	4
YGr	7	Fat	4
REA	6	Pct	4
Sta		Marb	4

FLYING H EXTRA 150D
 EXTRA EXPOSURE 285L71 ET
 MS POLLED SWEETIE 285C6

PLD FREE AGENT 125J3
 MS CHANCE 270S93
 MS EXTRA SWEET 270M83

HFGC Hart 34W18

AMGV 1097963

Born: 2/5/2009 Semen:\$ 20

CE BW WW YW MK TM CED ST YG CW REA MB FT CV FM
 15 -4.5 49 70 31 56 2 N/A -0.12 5 0.15 -0.09 -0.09 -19.62 20.61
 0.53 0.62 0.55 0.55 0.37 0.38 | 0.26 0.44 0.21 0.24 0.24

EPDs 12/28/2013 AMF-NHF-CAF-OSF-DDF **Red Homo Polled**

- #1 marbling bull in the 2009 test involving 200 plus bulls.
- Excellent Igenity carcass profile.
- The total package...calving ease, muscle mass, maternal strength with exceptional carcass merit.

Red 50%**Igenity**

Ten	6	CWT	6
YGr	8	Fat	7
REA	4	Pct	7
Sta		Marb	7

FREEDOM 178F ET
 HF ROSCOE 34P59 ET
 MS PLD HART'S RUBY

LCC MAJOR LEAGUE A502M
 SBC MAJOR SCYTHIA 720
 LONK SCYTHIA K039

Red PB

CE BW WW YW MK TM CED ST YG CW REA MB FT CV FM
 12 0.5 60 91 27 57 -5 6 -0.20 24 0.26 -0.27 -0.27 -9.62 31.86
 0.75 0.81 0.77 0.78 0.68 0.69 I 0.30 0.56 0.24 0.26 0.26

EPDs 12/28/2013

Red Homo Polled

*2009 National Champion Pen Bull. *Phenomenal birth to growth spread off a first calf heifer. *Beef machine genetics for one of the all-time great Dam of Merit/Dam of Distinction cow families in the breed. *Pound maker beef, butt and guts with tremendous testicular development

JRI Top Recruit 254U82

AMGV 1080071

Born: 1/20/2008 Semen:\$ 20

Igenity

Ten	CWT
YGr	Fat
REA	Pct
Sta	Marb

PLD FREE AGENT 125J3
 TOP SECRET 253M75 ET
 MS PLD FRONTIER 253J60

EXTRA EXPOSURE 285L71 ET
 MS COCOA 254S72
 MS AT LAST 254P62

Red 50%

CE BW WW YW MK TM CED ST YG CW REA MB FT CV FM
 12 0.2 66 95 21 54 -1 N/A -0.18 26 0.56 0.10 0.10 29.0531.81
 0.36 0.40 0.37 0.36 0.28 0.29 0.19 0.30 0.19 0.19 0.19

EPDs 12/28/2013 AMF-NHF-CAF-OSF-DDF **Red Homo Polled**

- Code Red 506T offers you that breed leading Balancer blend of excellence with Cherokee Canyon and the great Butler Creek Farms Bruno cow family.
 - His daughters possess unbelievable mass, volume and phenotype.
 - The Code Red 506T sons are powerhouses and they definitely feature a world of mass, bone and scrotal circumference.
 - Priced at \$25 for 20 units or more and \$30 for less than 20 units.

BCFG Butlers Code Red 506T ET

AMGV 1066008

Born: 12/21/2007 Semen:\$ 30

Igenity

Ten	CWT
YGr	Fat
REA	Pct
Sta	Marb

BUF CRK CHF 824-1658
 BFCK CHEROKEE CNYN 4912
 MRM 1431 8611 9109

FREEDOM 178F ET
 BUTLERS RUBY
 502D

Red PB

CE BW WW YW MK TM CED ST YG CW REA MB FT CV FM
 13 0.5 58 82 23 51 9 10 -0.14 19 0.18 -0.27 -0.27 -16.2025.48
 0.47 0.51 0.48 0.48 0.40 0.41 I 0.17 0.39 0.13 0.13 0.13

EPDs 12/28/2013 AMF-NHF-CAF-OSF-DDF **Diluter Free Homo Polled**

"CALVING EASE GENETICS-EXCEPTIONAL GROWTH-FEED EFFICIENCY" 74# BW/84# actual WW off first calf heifer. Awesome low birth to high growth spread. With Top Secret currently off the market, Top Dog could be the next "go to bull", as he is phenotypically similar. He is deep, wide, structurally correct, good moving, and moderate framed (5.9 frame score). This Top Secret son had a 5.64# ADG with a plus 3 marbling score. With current high feed prices, and a need for better performing, easier fleshing cattle, Top Dog is a must for the commercial cattleman.

JRI Top Dog 68T14

AMGV 1065117

Born: 8/17/2007 Semen:\$ 20

Igenity

Ten	4	CWT	5
YGr	5	Fat	7
REA	4	Pct	7
Sta		Marb	7

PLD FREE AGENT 125J3
 TOP SECRET 253M75 ET
 MS PLD FRONTIER 253J60

EXTRA 2106K ET
 MS RAVEN 68R94
 MS GLORY BE 68N84

Red PB

CE BW WW YW MK TM CED ST YG CW REA MB FT CV FM
 8 0.8 62 92 9 40 10 3 -0.35 26 0.77 -0.53 -0.53 -28.7532.02
 0.75 0.80 0.76 0.76 0.67 0.67 0.12 0.43 0.56 0.49 0.52 0.52

EPDs 12/28/2013 AMF-NHF-CAF-OSF-DDF **Red Homo Polled**

2008 Breeder's Choice Futurity Runner-up Bull. Tremendous low birth to super growth spread off a first calf heifer. Exceptionally thick, wide-made package sporting a 16 square inch yearling ribeye. Excellent combo of unmatched phenotype and carcass merit... Buddy Boy has an impressive Igenity report.

CRAN Buddy Boy T729

AMGV 1039981

Born: 2/20/2007 Semen:\$ 25

Igenity

Ten	4	CWT	5
YGr	6	Fat	7
REA	4	Pct	7
Sta		Marb	7

BUSTER 8N
 BUDDY 7R
 54G

JAGERMEISTER 229M - ET
 R251
 JARED'S GIRL M201

Red PB

CE BW WW YW MK TM CED ST YG CW REA MB FT CV FM
 7 0.6 71 90 25 60 6 4 -0.25 23 0.38 -0.26 -0.26 -10.0425.65
 0.58 0.64 0.58 0.57 0.47 0.47 I 0.19 0.45 0.13 0.15 0.15

EPDs 12/28/2013 AMF-NHF-CAF-OSF-DDF **Diluter Free Homo Polled**

Grand Champion Bull - 2007 & 2008 Missouri State Fair Champion Senior Bull Calf - 2007 American Royal & 2008 National Gelbvieh

HFGC GIP Arrowhead S82

AMGV 1024957

Born: 9/10/2006 Semen:\$ 20

Igenity

Ten	3	CWT	7
YGr	4	Fat	6
REA	4	Pct	6
Sta	5	Marb	7

FREEDOM 178F ET
 HF ROSCOE 34P59 ET
 MS PLD HART'S RUBY

TABASCO J26 ET
 BARBARA 278M
 GI BARBARA 936J

JRI Prime Cut 406S30

AMGV 989049

Born: 2/18/2006 Semen:\$ 25

CE BW WW YW MK TM CED ST YG CW REA MB FT CV FM
 13 -1.2 58 77 31 60 9 1 -0.13 13 0.24 -0.17 -0.17 -13.89 21.24
 0.75 0.79 0.75 0.75 0.70 0.69 0.28 0.29 0.55 0.25 0.27 0.27

EPDs 12/28/2013

Red Homo Polled

If you're needing to add more depth of rib, natural thickness and muscle mass Prime Cut needs to be on your purchase order. His super Dam of Merit dam sports a 105 weaning weight ratio and a 720# average 205 day weight. Prime Cut's full sister JRI 406N30 weaned a 745 pound bull calf her first year.

Red PB**Igenity**

Ten	1	CWT	7
YGr	3	Fat	
REA	8	Pct	5
Sta		Marb	6

FLYING H EXTRA 150D
 EXTRA EXPOSURE 285L71 ET
 MS POLLED SWEETIE 285C6

PLD FREE AGENT 125J3
 MS LEGACY 406L20
 MS PLD CELEB 406G10 ET

RID R Collateral 2R

AMGV 938431

Born: 2/5/2005 Semen:\$ 40

CE BW WW YW MK TM CED ST YG CW REA MB FT CV FM
 9 2.4 61 91 30 60 3 6 -0.30 27 0.58 0.18 0.18 38.26 31.38
 0.90 0.91 0.90 0.90 0.88 0.88 0.26 0.36 0.60 0.35 0.28 0.28

EPDs 12/28/2013 AMF-NHF-CAF-OSF-DDF **Diluter Free Homo Polled**

The breed leader for Tenderness through GeneSTAR testing. Collateral brings the complete package, including a rarity of 5 out of 6 Tenderness genes. Nursed awesome first calf heifer that flat knows how to spread low birth to robust growth. If you are looking for that sire to add the all-important Tenderness genes without sacrificing phenotype, muscle and structure - look no further. Homozygous polled by DNA testing.

Red PB**Igenity**

Ten		CWT	
YGr		Fat	
REA		Pct	
Sta		Marb	

FREEDOM 178F ET
 BAR GT FLASHBACK 410M ET
 CLAUDIA 1144J

BAR GT LOUIE 2J
 BAR GT LONI 27N ET
 MS 16B

HFGC GIP Extra Hot P60

AMGV 897101

Born: 5/20/2004 Semen:\$ 20

CE BW WW YW MK TM CED ST YG CW REA MB FT CV FM
 12 1.5 57 69 23 51 5 1 -0.31 12 0.57 -0.36 -0.36 -29.06 16.08
 0.66 0.70 0.65 0.64 0.61 0.61 0.29 0.27 0.50 0.23 0.25 0.25

EPDs 12/28/2013 AMF-NHF-CAF-OSF-DDF **Diluter Free Homo Polled**

Homozygous polled, diluter free, total outcross Freedom genetics. Excellent genetic package featuring the beefmaker Extra Exposure on the top side of the pedigree and the famed Barbara cow family on the bottom side. A young sire that's really stamping his progeny with structural correctness and flawless phenotype. Extra Hot's performance plus dam sports a 106 weaning weight ratio.

Red PB**Igenity**

Ten		CWT	
YGr		Fat	
REA		Pct	
Sta		Marb	

FLYING H EXTRA 150D
 EXTRA EXPOSURE 285L71 ET
 MS POLLED SWEETIE 285C6

TABASCO J26 ET
 BARBARA 278M
 GI BARBARA 936J

HFGC HF Roscoe 34P59 ET

AMGV 897100

Born: 2/23/2004 Semen:\$ 20

CE BW WW YW MK TM CED ST YG CW REA MB FT CV FM
 13 -1.3 75 100 20 58 7 4 -0.21 26 0.38 -0.37 -0.37 -17.59 31.22
 0.70 0.73 0.70 0.70 0.66 0.66 0.01 0.31 0.53 0.28 0.30 0.30

EPDs 12/28/2013 AMF-NHF-CAF-OSF-DDF **Red Homo Polled**

Roscoe's popularity is definitely on the rise with the powerful progeny he's producing. The beautiful Roscoe daughter photographed above was the high seller red heifer calf on the '07 Kansas/Nebraska "Pick of the Herds" Female sale. Roscoe's "JR" grandam IHF Miss Nugget 34U was one of the breeds all-time great Dam of Distinction producers with unbelievable longevity... 15 natural born calves.

Red PB**Igenity**

Ten	3	CWT	
YGr	5	Fat	6
REA	6	Pct	7
Sta		Marb	7

LEACHMAN NEW DAY 205B
 FREEDOM 178F ET
 MISS 61Y

GARST BULL Z138
 MS PLD HART'S RUBY
 MISS NUGGET 34U

JRI Fully Exposed 270N83

AMGV 883933

Born: 8/21/2003 Semen:\$ 20

CE BW WW YW MK TM CED ST YG CW REA MB FT CV FM
 6 4.6 79 121 40 79 -1 0 -0.18 48 0.67 -0.08 -0.08 20.13 47.59
 0.81 0.84 0.82 0.82 0.77 0.77 0.35 0.28 0.58 0.23 0.24 0.24

EPDs 12/28/2013 AMF-NHF-CAF-OSF-DDF **Diluter Free Homo Polled**

Diluter-free red genetics...totally unrelated to Freedom and all red sire lines. Crowd favorite Senior Champion Bull in the 2006 National Gelbvieh Show. Impressive stats: 82# modest birth, 742# WW/105 ratio, 1258# YW/106 ratio, 184 cm. yearling pelvic, 39.1 cm yearling scrotal, 4.83# ADG, 0.08 yearling backfat and 14.1" ribeye. This Judd Ranch 270 cow family is one of the shortest gestation/superb growth cow families in the breed.

Red PB**Igenity**

Ten		CWT	
YGr		Fat	
REA		Pct	
Sta		Marb	

FLYING H EXTRA 150D
 EXTRA EXPOSURE 285L71 ET
 MS POLLED SWEETIE 285C6

CAROLINA CPR
 MS LIFESAVER 270K73
 MS PLD JONI 270D63 ET

Red PB

CE BW WW YW MK TM CED ST YG CW REA MB FT CV FM
 9 0.5 49 59 32 57 8 2 -0.26 5 0.33 -0.16 -0.16 -24.9611.55
 0.80 0.81 0.80 0.80 0.77 0.77 0.41 0.29 0.57 0.23 0.26 0.26

EPDs 12/28/2013 AMF-NHF-CAF-OSF-DDF **Red Homo Polled**

2005 Reserve National Champion. 2004 Louisville Reserve Grand Bull. This deep-sided long hipped, muscular Shining Spirit grandson should really compliment Freedom daughters. Grand bull and the Houston Stock Show, Colorado and Oklahoma State Fair.

JDPD Rolex 151M

AMGV 805051

Born: 6/20/2002 Semen:\$ 25

Igenity

Ten	CWT
YGr	Fat
REA	Pct
Sta	Marb

SHINING SPIRIT
 SLEEP TIGHT ET
 PRINCESS OF POWER

FREEDOM 178F ET
 VISTA MS FREEDOM 0151K
 VISTA HORIZON 7201G

Red PB

CE BW WW YW MK TM CED ST YG CW REA MB FT CV FM
 12 0.1 63 93 29 61 8 6 -0.16 25 0.21 -0.31 -0.31 -13.5832.09
 0.87 0.88 0.87 0.87 0.84 0.84 0.48 0.35 0.60 0.32 0.35 0.35

EPDs 12/28/2013 AMF-NHF-CAF-OSF-DDF **Red Homo Polled**

Full brother to breed's no 1 selling calving ease AI sire JRI Pld Free Agent 125J3. Heavy Equipment is homozygous polled by DNA testing and his full brother Free Agent is proven homozygous polled and diluter free.

JRI Heavy Equipment 125M3

AMGV 805882

Born: 2/1/2002 Semen:\$ 25

Igenity

Ten	CWT
YGr	Fat
REA	Pct
Sta	Marb

LEACHMAN NEW DAY 205B
 FREEDOM 178F ET
 MISS 61Y

PLD GRAND PRIX ET
 MS PLD GRAND PRIX 125G3
 MS PLD SUMMIT 125D3

Red PB

CE BW WW YW MK TM CED ST YG CW REA MB FT CV FM
 3 4.0 82 118 -2 39 8 -3 -0.20 45 0.46 -0.37 -0.37 -12.7742.68
 0.85 0.87 0.85 0.85 0.83 0.83 0.46 0.39 0.59 0.39 0.40 0.40

EPDs 12/28/2013 AMF-NHF-CAF-OSF-DDF **Red Homo Polled**

2005 New Sire Addition that swept the 2003 Breeder's Choice Bull Futurity and topped the 2003 National Sale at \$50,000. Jagermeister is one tremendous individual with loads of style and power. His Polled Gizmo/JR dam, Jasmine, is one of the top donor females ever owned by the breed leading TJB Gelbvieh program in Georgia.

TJB Jagermeister 229M - ET

AMGV 802499

Born: 1/18/2002 Semen:\$ 20

Igenity

Ten	CWT
YGr	Fat
REA	Pct
Sta	Marb

FREEDOM 178F ET
 RED ALERT 2077K
 LADY GRANITE 2001E ET

POLLED GIZMO 17Z
 59D5 JASMINE 177G ET
 MISS JR'S JENNY 59D ET

Red PB

CE BW WW YW MK TM CED ST YG CW REA MB FT CV FM
 15 -0.4 68 103 48 82 13 10 -0.12 30 0.31 -0.09 -0.09 12.7338.24
 0.84 0.86 0.84 0.84 0.81 0.81 0.51 0.33 0.59 0.30 0.29 0.29

EPDs 12/28/2013 AMF-NHF-CAF-OSF-DDF **Red Hetero Polled**

Spring 2005 New Sire Addition - total outcross for Freedom daughters. Syndicated two years ago as one of the top selling bulls in the breed. Independence is producing low birth weights, quick weight gain and sound/easy fleshing progeny. Excellent combo of flawless phenotype and excellent EPD strength.

RHRT Independence L19

AMGV 766448

Born: 3/5/2001 Semen:\$ 30

Igenity

Ten	CWT
YGr	Fat
REA	Pct
Sta	Marb

BENNETT IDEAL G182
 BENNETT J25
 MISS VALUE E86

RED JET E1 ET
 MIS RED JET E270H7
 MISS EZE E270

Red PB

CE BW WW YW MK TM CED ST YG CW REA MB FT CV FM
 4 4.7 92 114 31 77 7 -2 -0.20 43 0.41 -0.48 -0.48 -26.0433.93
 0.92 0.93 0.92 0.92 0.91 0.91 0.71 0.45 0.61 0.50 0.53 0.53

EPDs 12/28/2013 AMF-NHF-CAF-OSF-DDF **Red Homo Polled**

Fosters topped the 2002 National Gelbvieh Sale at \$50,000 and his calves look great. His incredible dam is one of the all-time greats and Foster's ET full sisters won National Champion Female honors both in 2002 and 2003. Proven genetics with high growth, proven progeny champions and a good kind.

EGL Fosters LO17 ET

AMGV 765517

Born: 3/2/2001 Semen:\$ 25

Igenity

Ten	CWT
YGr	Fat
REA	Pct
Sta	Marb

LEACHMAN NEW DAY 205B
 FREEDOM 178F ET
 MISS 61Y

BULLSEYE C154 ET
 PHOEBE G374
 349A

JRI PLD Free Agent 125J3

AMGV 665810

Born: 1/28/1999 Semen:\$ 20

CE BW WW YW MK TM CED ST YG CW REA MB FT CV FM
 16 -2.7 51 73 13 39 9 -1 -0.13 9 -0.14 -0.48 -0.48 -48.28 21.90
 0.94 0.95 0.94 0.94 0.94 0.94 0.82 0.54 0.61 0.69 0.68 0.68

EPDs 12/28/2013 AMF-NHF-CAF-OSF-DDF Diluter Free Homo Polled

This homozygous polled, diluter free son of Freedom is proving to be one of the best calving ease sires in the breed. Note his superior calving ease, low birth and gestation length EPD strength in the breed's top 5% or better.

Red PB**Igenity**

Ten	CWT
YGr	Fat
REA	Pct
Sta	Marb

LEACHMAN NEW DAY 205B
 FREEDOM 178F ET
 MISS 61Y

PLD GRAND PRIX ET
 MS PLD GRAND PRIX 125G3
 MS PLD SUMMIT 125D3

DCSF Post Rock Top Brass ET

AMGV 652929

Born: 10/8/1998 Semen:\$ 20

CE BW WW YW MK TM CED ST YG CW REA MB FT CV FM
 11 1.6 66 96 46 79 13 8 -0.35 29 0.40 -0.49 -0.49 -26.81 32.98
 0.91 0.92 0.91 0.91 0.89 0.89 0.65 0.42 0.60 0.45 0.42 0.42

EPDs 12/28/2013 AMF-CAF Diluter Free Homo Polled

Homo polled and diluter free genetics in a very attractive sire. Maternal excellence - gorgeous udders and super easy fleshing.

Red PB**Igenity**

Ten	CWT
YGr	Fat
REA	Pct
Sta	Marb

BENNETT HORIZON
 BENNETT PACESETTER A16
 MISS SELECT Y60

3R RED SUMMIT 76Y ET
 3R PLD WILMA 215A
 3R WILMA 323Y ET

SLC Freedom 178F ET

AMGV 601105

Born: 2/26/1996 Semen:\$ 25

CE BW WW YW MK TM CED ST YG CW REA MB FT CV FM
 12 0.2 66 98 16 49 8 6 -0.18 28 0.38 -0.42 -0.42 -20.44 34.55
 0.97 0.97 0.97 0.97 0.97 0.97 0.91 0.57 0.61 0.75 0.74 0.74

EPDs 12/28/2013 AMF-NHF-CAF-OSF-DDF Diluter Free Homo Polled

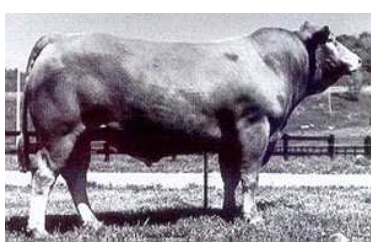
Freedom is a calving ease bull that is homozygous polled, diluter free and sires cattle that grow. He continues to sire sale toppers, show winners, and you will be proud to be the owner of a bull, steer, or female that is sired by Freedom. Look at his EPDs - a leader in calving ease, birth weight, growth, gestation and daughter's calving ease. This dark red bull can be used with confidence!

Red PB**Igenity**

Ten	CWT
YGr	Fat
REA	Pct
Sta	Marb

SENSATION'S DAY 21Y
 LEACHMAN NEW DAY 205B
 023Z

MR FORKAS 1S (JSE M2)
 MISS 61Y
 BELL ORCHID

HHF Summits Pride A36ET

AMGV 327936

Born: 9/20/1991 Semen:\$ 15

CE BW WW YW MK TM CED ST YG CW REA MB FT CV FM
 12 2.4 52 65 36 62 7 0 -0.32 11 0.56 -0.16 -0.16 -13.07 14.96
 0.75 0.79 0.76 0.76 0.70 0.70 0.51 0.34 0.56 0.33 0.36 0.36

EPDs 12/28/2013 Red Homo Polled

Thick, eye appeal, and great muscling. Out cross for many Gelbvieh breeders. Solid EPDs! Red and homozygous polled. A red sire well tested without a Freedom pedigree. They are thick, well muscled and have plenty of eye appeal.

Red PB**Igenity**

Ten	CWT
YGr	Fat
REA	Pct
Sta	Marb

STATESMAN P214
 POLLED SUMMIT 648U
 MISS FLOTO PRIDE 187R

POLLER'S PRIDE
 W9 MISS GLORY 238M
 MISS FLOTO 238M

FHG Polled Pilgram 180A

AMGV 300788

Born: 3/24/1991 Semen:\$ 15

CE BW WW YW MK TM CED ST YG CW REA MB FT CV FM
 9 2.4 53 67 30 57 12 -2 -0.25 13 0.17 -0.25 -0.25 -22.66 16.02
 0.85 0.86 0.85 0.85 0.82 0.82 0.71 0.39 0.59 0.39 0.41 0.41

EPDs 12/28/2013 Red Homo Polled

Polled Pilgram is a homozygous polled son of ABS's Flying Magnum. He is diluter free and his EPS's show good calving ease without sacrificing growth. Pilgram is very thick, deep ribbed sire who should be an outcross sire for many herds. Use this older proven diluter free calving ease sire.

Red PB**Igenity**

Ten	CWT
YGr	Fat
REA	Pct
Sta	Marb

MAGNUM P.I.
 FLYING MAGNUM 47X
 HAY MISS P48

023S ET
 MS SHADOW U78
 MS. GOLD STANDARD 26R

Red PB

CE BW WW YW MK TM CED ST YG CW REA MB FT CV FM

9 0.8 56 74 40 68 9 7 -0.18 14 0.15 -0.26 -0.26-20.9520.09

0.95 0.96 0.95 0.95 0.95 0.95 0.90 0.53 0.61 0.66 0.67 0.67

Igenity

Ten	CWT
YGr	Fat
REA	Pct
Sta	Marb

EPDs 12/28/2013 AMF-NHF-CAF-OSF-DDF **Red Homo Polled**

Leading sire for maternal strength and that all-important daughters stayability trait. One of the most widely used sires in the breed with over 2,300 progeny recorded at the American Gelbvieh Association.

JEB Polled Gizmo 17Z

AMGV 264903

Born: 2/9/1990

Semen: \$ 20

FLOTO

TEJAS ROLLS ROYCH 868
MISS ARATA 868KMR SENSATION 506S
MS. SENSATION 31X
MISS HAMBURG 4U



Eldon and Kathy Starr

210 Starr Drive

Stapleton, NE 69163

Phone: 1-800-535-6173

FAX: 1-308-587-2248

Email: bullbarn@bullbarn.com

Web: www.bullbarn.com

Ordering and Shipping

- We deliver by Bull Barn truck, FedEx or UPS.
- Information needed: Name, address, phone, email address (if applicable), and the date the shipment is needed.
- You may place your order by phone, FAX, or email.
- Free shipping on orders of 100 units or more.
- Overnight (or 2-day, east or west coast) service available at extra charge.
- Semen prices are subject to change without notice.

Breed Association:

American Gelbvieh Association

10900 Dover Street

Westminster, CO 80021

Breed Averages

	CE	BW	WW	YW	MK	TM	CED	ST	YG	CW	RE	MB	FT	CV	FM
Gelbvieh Active Sires	9	1.3	66	91	29	62	7	5	-0.24	25	0.45	-0.18	-0.06	-3.47	28.84
Balancer Active Sires	11	0.2	64	97	27	58	7	4	-0.12	27	0.41	0.25	-0.03	40.41	35.35